

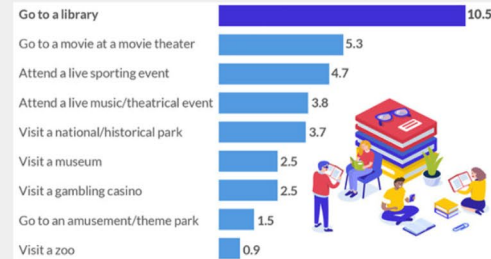


ALPINE PUBLIC LIBRARY

July 19, 2022

2019 APL FAST FACTS

A 2019 STUDY ASKED,
"ABOUT HOW MANY
TIMES IN THE PAST
YEAR DID YOU DO EACH
OF THE FOLLOWING?"



Source: "Americans' Reports of Leisure and Activities" study conducted by Gallup

VOLUNTEER HOURS
3,419

45,896
VISITS TO APL

800
NEW REGISTERED PATRONS

756
PROGRAM ATTENDEES

9,508
ILL ITEMS RECEIVED FOR APL PATRONS

679
LIBRARY PROGRAMS

83,747
ITEMS CIRCULATED

2021 ACCREDITATION REPORT

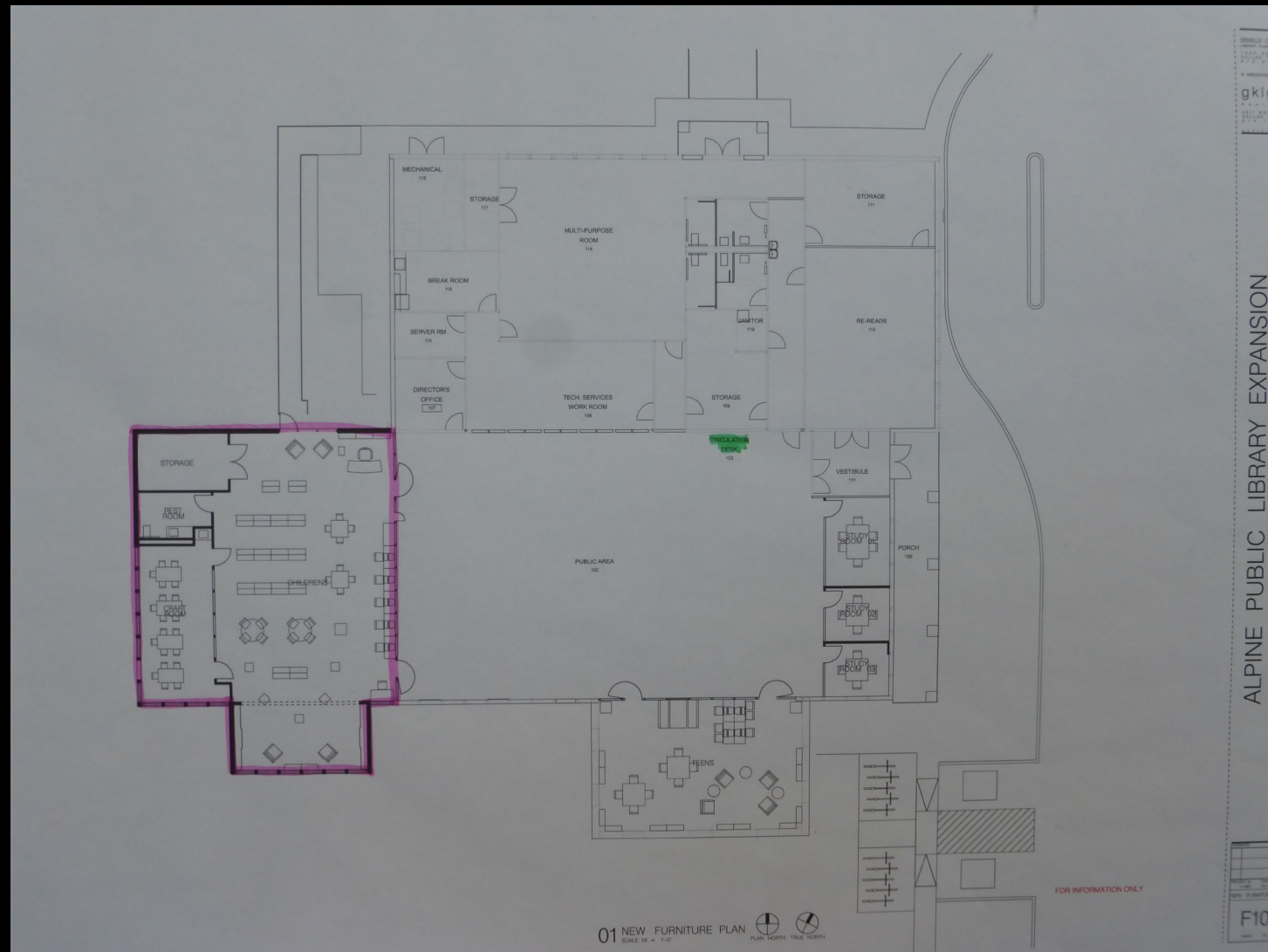
- APL is accredited for SFY 2023
- Volunteer hours: 4,038
- New patrons: 212 (January through June 2022, 302 new patrons)
- Programs: 483; Program attendance: 3,683
- Circulation: 26,364
- Website visits: 142,182
- Computer use Wi-Fi: 2,386; Desktop: 2,073
- Interlibrary loan (ILL): 469 requests and 228 lends

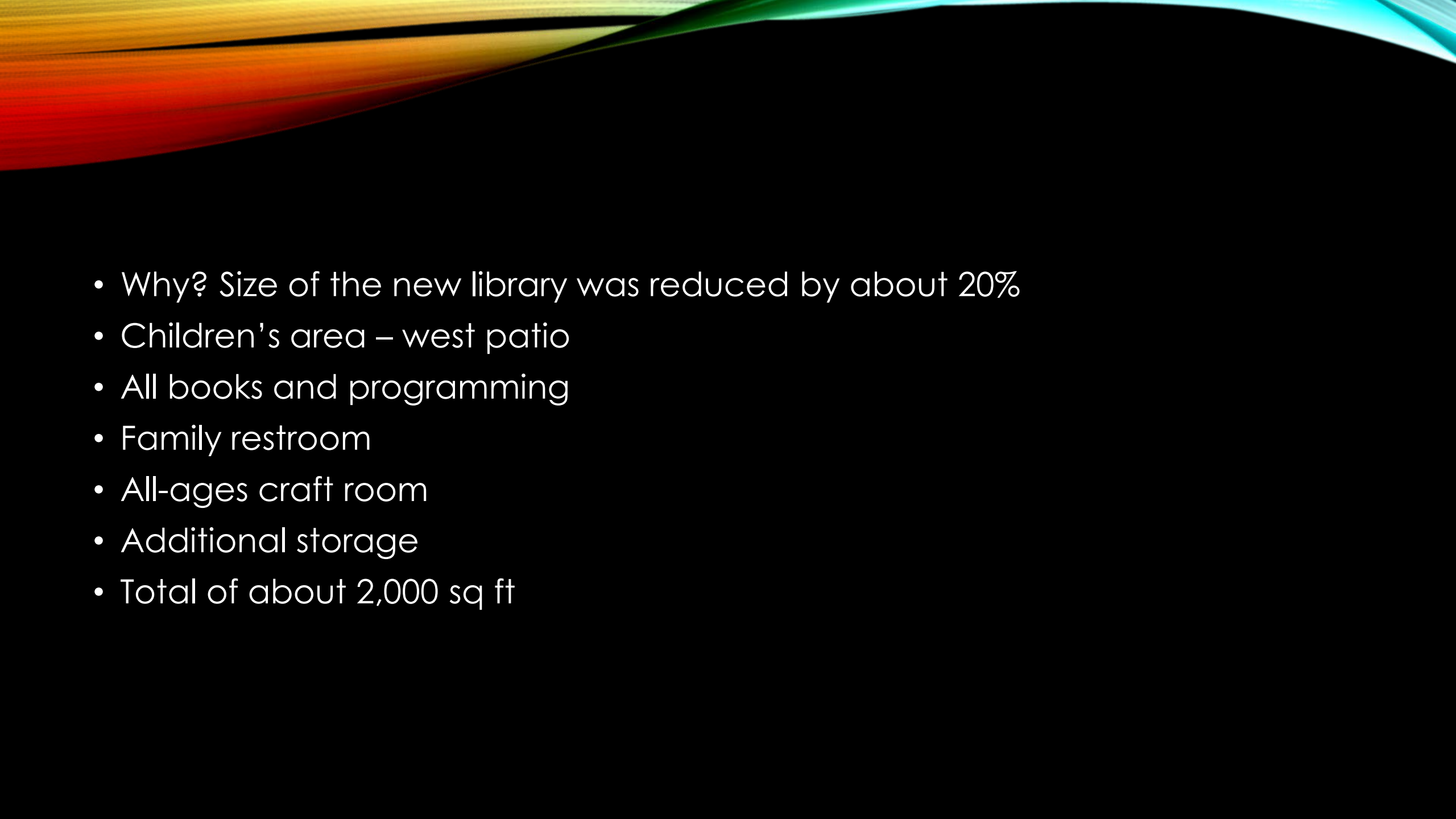



75 YEARS IN THE BIG BEND

- El Progreso Club vision
- 300 books to start the library
- Bookmobile from Big Bend and Lajitas to Sierra Blanca

EXPANSION



- 
- Why? Size of the new library was reduced by about 20%
 - Children's area – west patio
 - All books and programming
 - Family restroom
 - All-ages craft room
 - Additional storage
 - Total of about 2,000 sq ft

- 
- South patio
 - Teen and young adult
 - Designed by teens for teens
 - Makerspace
 - 3D printers
 - Plenty of electrical outlets
 - Total of about 1,000 sq ft



ADULT BASIC EDUCATION

- Funding from Texas Workforce Commission through Ysleta ISD
- Reimburse APL for Adult Education and Literacy services
- TOEFL – Test of English as a Foreign Language
- ESL – English as a Second Language
- HSE – High School Equivalency
- Citizenship
- Spanish

CURRENT STATUS

- Seven tutors – all volunteer
- Sessions are 1 on 1 or group
- ESL learners -14
- HSE- 7
- Citizenship – 2
- TOEFL – 2
- Spanish – two sessions per year
- To date 7 HSE learners have passed the exam and received their HS diploma
- 2 of the HSE learners are currently enrolled at Sul Ross

UPGRADES

- APL hired an Adult Education Coordinator paid with the grant
- Schedule classes and tutor
- Become an HSE testing location
- Cover the Tri-county area
- Need more tutors



YOUTH EDUCATION

- Collaboration with AISD and Sul Ross on library programs
- NASA @ My Library also includes McDonald Observatory
- Early literacy toddlers through middle school age
- Work with teachers to create APL content



FITNESS * FLAIR * FUN




RIBBON DANCE!

MONDAYS 4:30-5:30

AGES 9 AND OVER

Learn the basics
of ribbon dance
and workout with
friends!



Alpine Public Library
805 W Ave. E
Alpine, TX
837-2621



+



Toddler Time 2022

June

2nd: Animals Move!

9th: Animal Parts

16th: Animal Sounds

23rd: Spots and Stripes

30th: No Class

JULY

7TH COLORS

14TH: SHAPES

21ST: COUNTING

28TH LETTERS

AUGUST

4TH: I AM SPECIAL

11TH: THE POTTY IS FOR ME!

18TH: WHEELS

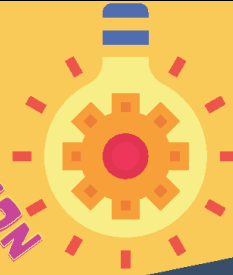
25TH: I WENT WALKING

**ALPINE PUBLIC LIBRARY
COMMUNITY ROOM
10:00AM-11:00AM**





CREATION
STATION!



MAKERSPACE SATURDAY 2022

MARCH 5
APRIL 2
MAY 7
JUNE 4
AUG. 6
SEPT. 3
OCT. 1
NOV. 5
DEC. 3

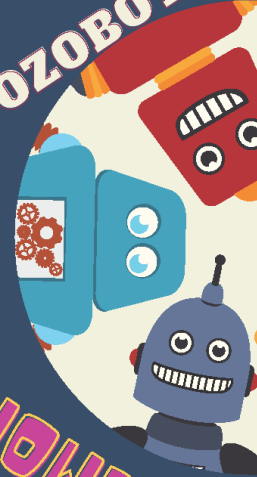
10:00am-12:00pm

Alpine Public Library

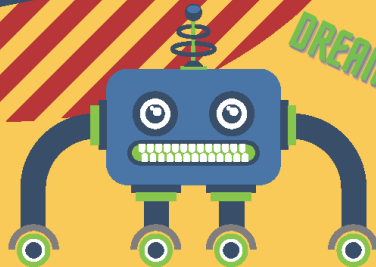
805 W. Ave. E

AGES
6-11

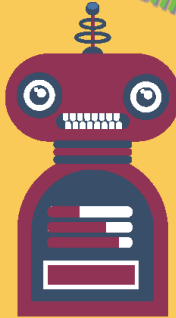
OZOBOTS



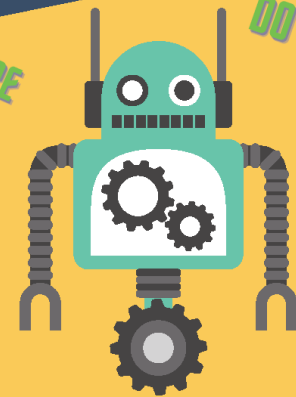
WOW!



DREAM



DARE



DO

BUILD A BETTER READER

WITH



JOIN HERE FOR FREE:

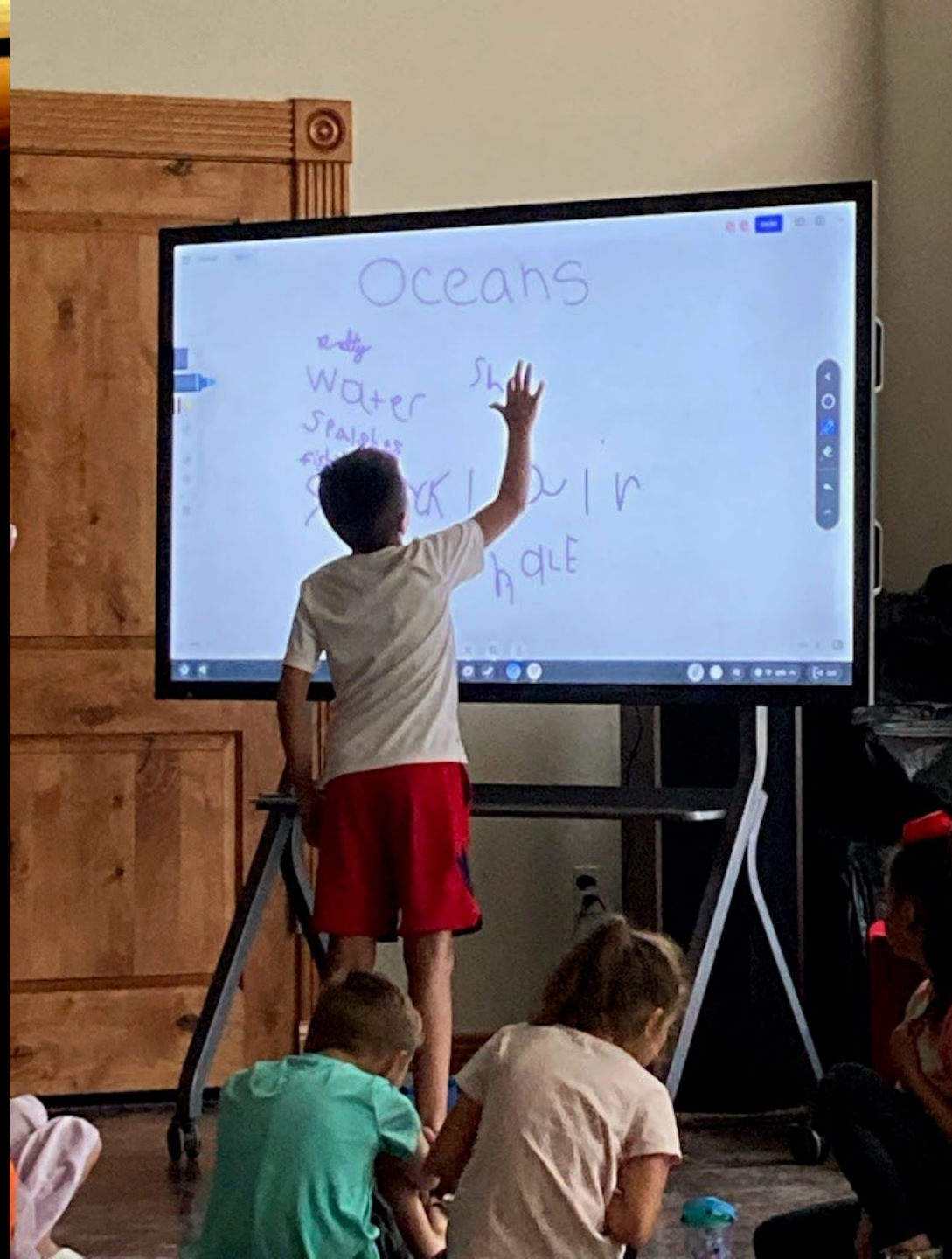
alpinepubliclibrary.beanstack.org

PRIZES!

BADGES!

CHALLENGES!





See More Stars!

Alpine Public Library Community Room

August 12th, 5:00pm

All Ages

**FIRST IMAGES FROM THE
JAMES WEBB TELESCOPE**

**CHILDREN'S ACTIVITIES
REFRESHMENTS
NIGHTTIME VIEWING**

DOOR PRIZE

*Free admission to a McDonald Observatory
Star Party! Must be present to win.*

The McDonald Observatory, Big Bend Conservation Alliance, Marathon
Dark Sky Park, Alpine Night Sky Team



THANK YOU FOR YOUR
CONTINUED SUPPORT OF
ALPINE PUBLIC LIBRARY