



# UTILITIES DEPARTMENT UPDATES

City Council Meeting 5/10/2022

**CITY OF ALPINE**



## RATE STUDIES

- ✚ Establishing cost-based rates, fees, and charges is an important component in a well managed and operated utility.
- ✚ Cost-based rates provide sufficient funding to allow communities to build, operate, maintain, and reinvest in their utilities.
- ✚ Properly and adequately funded utilities also allow for the economic development and sustainability of the local community.



# RATE STUDIES

## WHAT DO RATE STUDIES ACCOMPLISH?

- ✚ Helps to maintain the long-term health and integrity of the utility system
- ✚ Quantifies policies, priorities, and initiatives
- ✚ Tells the “true” cost of providing the service
- ✚ Tracks cost information
- ✚ Evaluates equity between customer groups
- ✚ Communicates financial decisions and their impacts
- ✚ Provide a management decision tool

## A SUCCESSFUL RATE STUDY BLENDS:

- ✚ Finance
- ✚ Engineering
- ✚ Customer Service
- ✚ Administration

# EXTRA-TERRITORIAL JURISDICTION (ETJ)





# EXTRA-TERRITORIAL JURISDICTION (ETJ)

Hotel Parker  
Casitas



# EXTRA-TERRITORIAL JURISDICTION (ETJ)

Hotel Parker Casitas





# EXTRA-TERRITORIAL JURISDICTION (ETJ)

Potential Site for Dollar General



# EXTRA-TERRITORIAL JURISDICTION (ETJ)

Potential Site for Dollar General





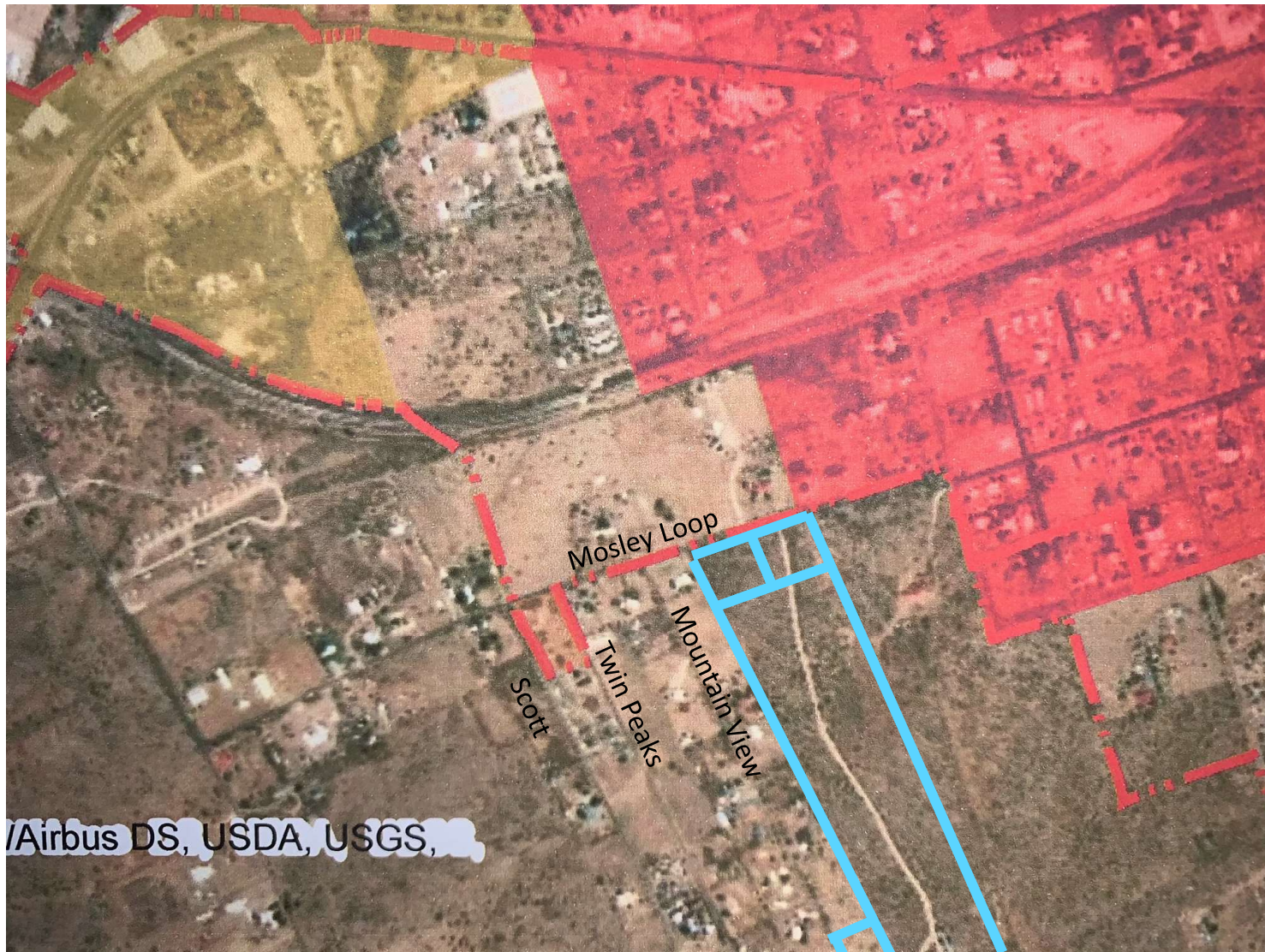
## EXTRA-TERRITORIAL JURISDICTION (ETJ)



Tap Requests for 5 properties along Harriett, outside city limits



# EXTRA-TERRITORIAL JURISDICTION (ETJ)



Tap Requests for properties along W Mosley Loop, outside city limits



# FUTURE GROWTH

## TxDOT Expansion





## FUTURE GROWTH

Potential site for AEP Service Center





## FUTURE GROWTH

Potential site for AEP Service Center





# EMERGENCIES





# EARTH DAY – APRIL 22ND

