



Texas Pacifico at a Glance

San Angelo, TX

Grupo Mexico

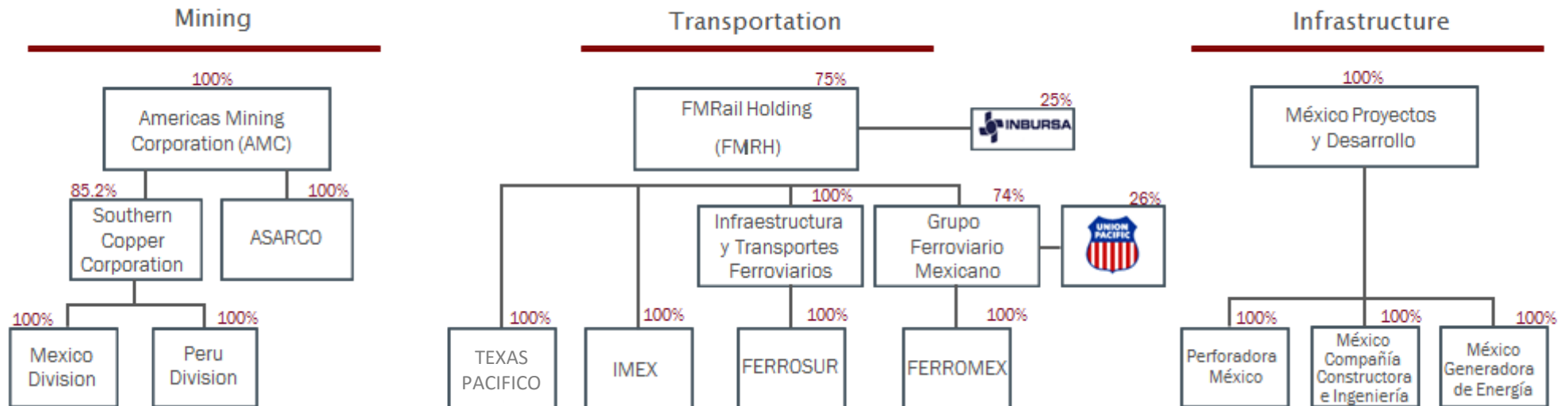
Texas Pacifico (TXPF)

Texas Pacifico Today

Texas Pacifico Potential

Grupo Mexico

Mining: The 4th largest producer of copper and largest copper reserves in the world.
Transportation: The largest Railroad in Mexico with 64% of the market share.
Infrastructure: 78 years of experience in infrastructure and construction projects.



Grupo México, Annual Report 2015

Grupo Mexico: Transportation Division

Texas Pacifico (TXPF) is a U.S. subsidiary of Grupo Mexico, which also owns the connecting rail lines of Ferromex, Ferrosur and Intermodal Mexico.



- Provides rail services, intermodal and support in logistic solutions
- Largest rail coverage in Mexico
- Operates 620 locomotives, 19,508 cars and has a workforce of 7,983 employees



- Third largest rail coverage in Mexico
- Operates 178 locomotives, 7,977 cars and has a workforce of 2,038 employees



- Offers terminal services; loading and unloading of goods and overland transportation
- Operates in 40 major cities and in 12 states in Mexico



- Operates 380 miles in West Texas over the South Orient Rail Line
- Interchanges with UP at Alpine, Tx, BNSF and FWWR at San Angelo Junction and with FFE at Presidio

Grupo Mexico

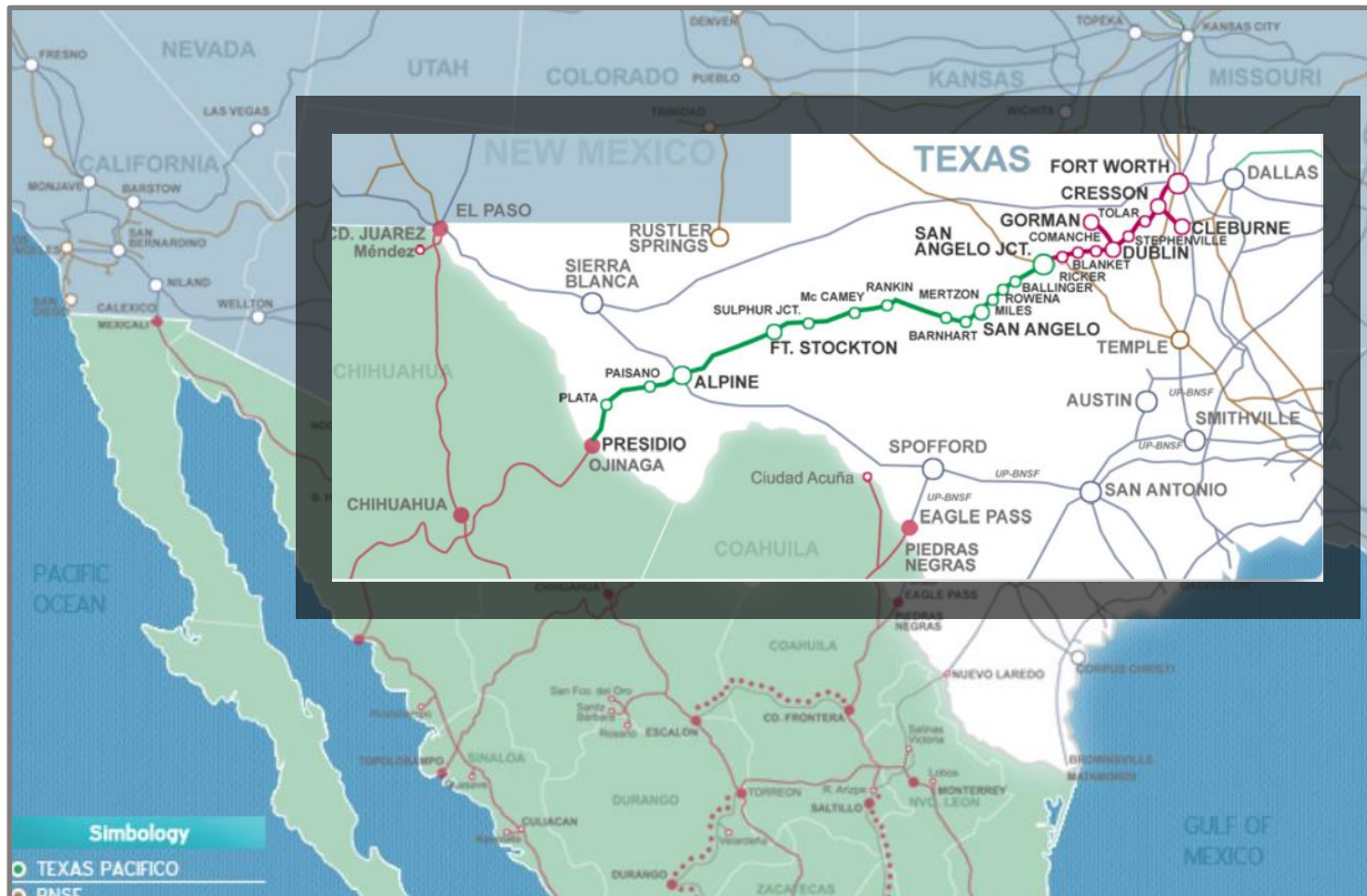
Texas Pacifico (TXPF)

Texas Pacifico Today

Texas Pacifico Potential

Texas Pacific: TXPF

TXPF provides freight rail service between San Angelo Junction and Presidio, Texas, on the Mexican border.



www.Texaspacifico.com

Texas Pacifico: TXPF

Resources

Facts



MILES

391

72%

CAGR VOLUME 2001 – 2016



LOCOMOTIVES

28

658M

TON – MILES 2015



CAPEX 2012 – 2016

\$104 M

~6M

FRAC SAND MOVED 2012 – 2015

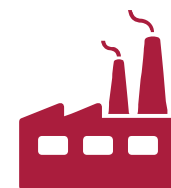


CLASS 1 CONNECTIONS

4

~10

INDUSTRIES SERVED



Grupo Mexico

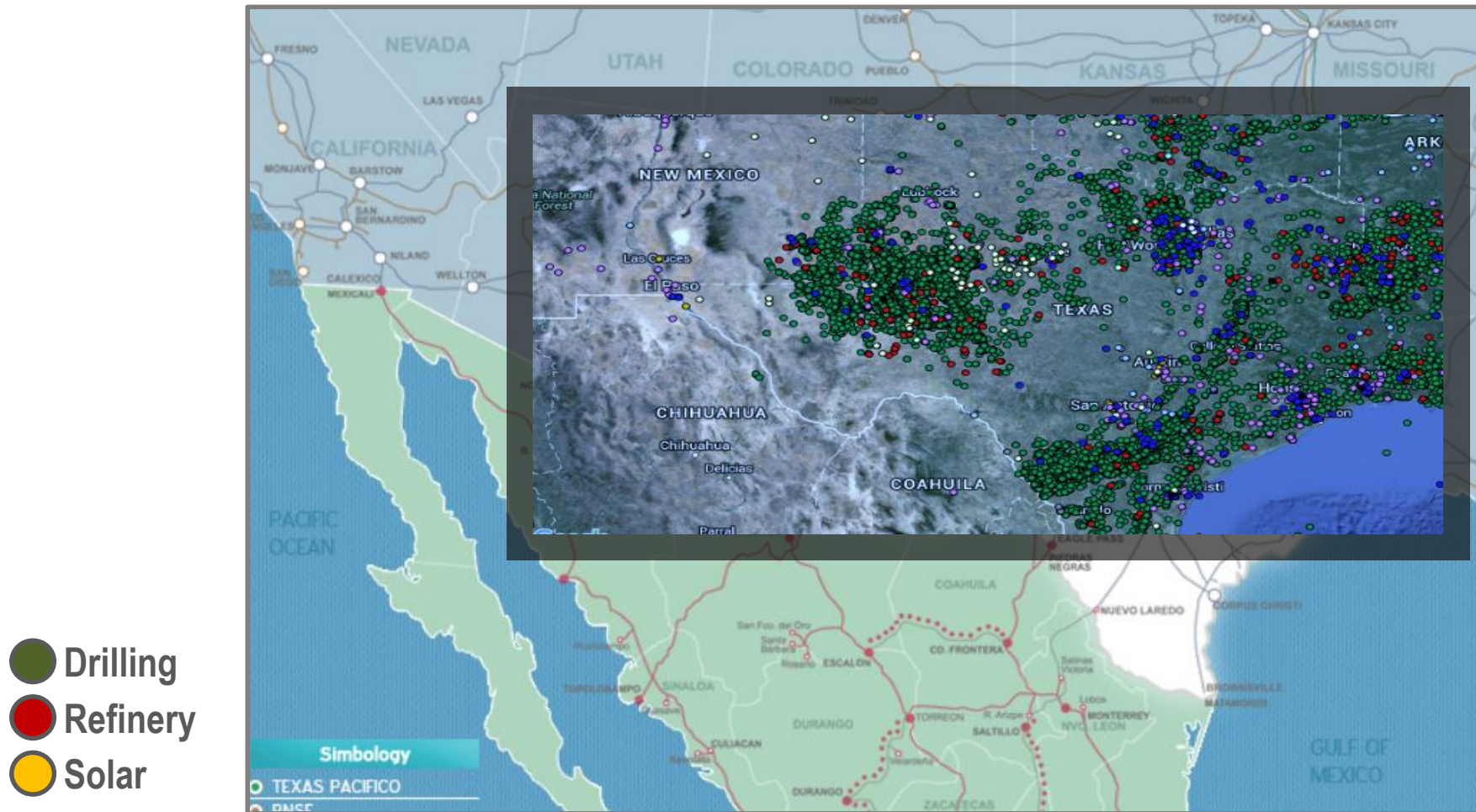
Texas Pacifico (TXPF)

Texas Pacifico Today

Texas Pacifico Potential

TXPF: Location

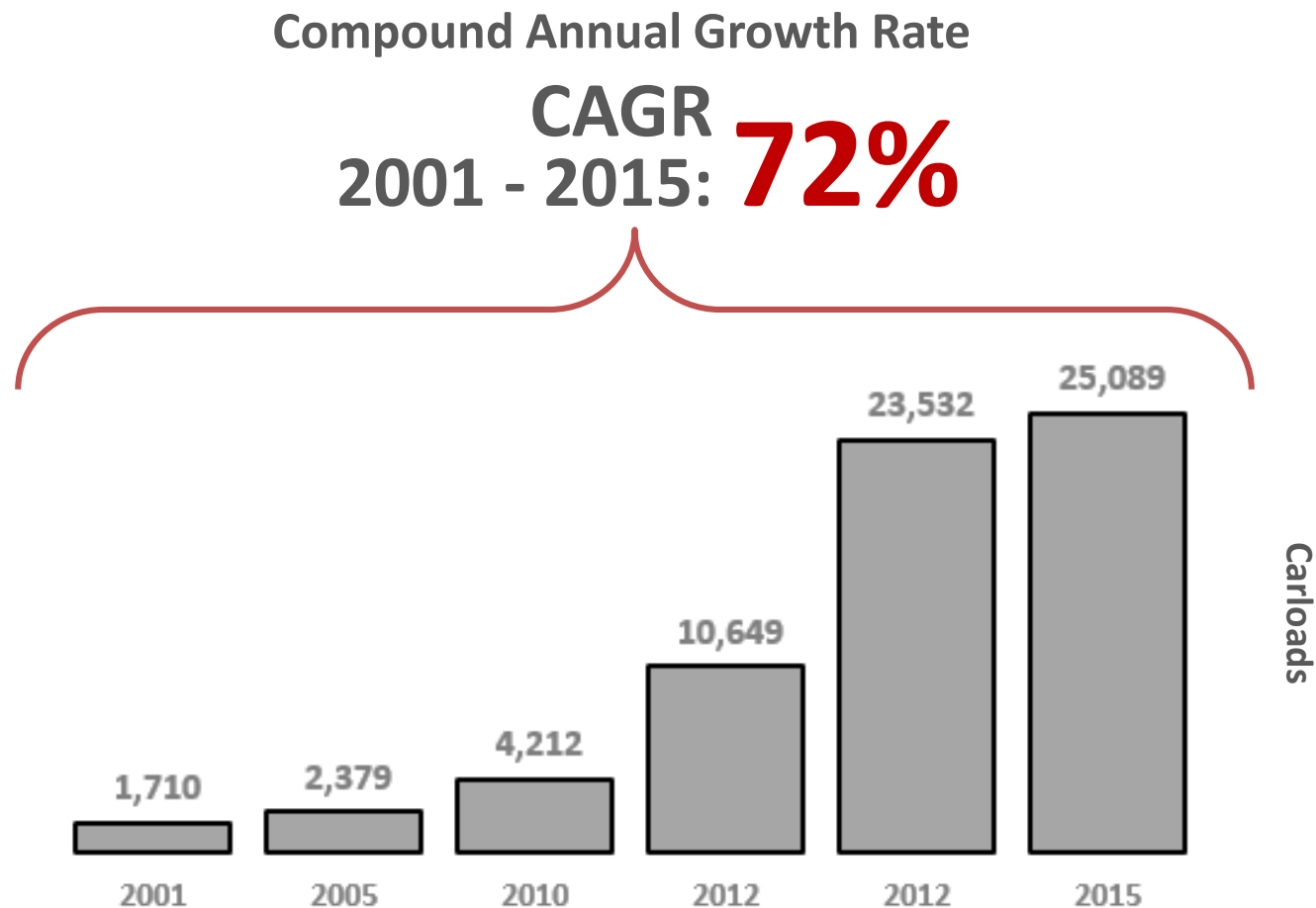
Due to its privileged location, TXPF has become a key player in the Oil and Gas industry in West Texas.



<http://www.drillingmaps.com/>

TXPF: Performance

Investments have allowed a significant increase in the volume handled on the TXPF, but there is still plenty of market share to capture.



TXPF Statistics

TXPF: State of the art in transloading from rail to truck



Some of our terminals ...

SAN ANGELO

RANKIN

BIG LAKE

FT. STOCKTON

SULPHUR JCT.

BARNHART

**MORE THAN 2 MILLION TONS
OF FRAC SAND IN 2015**

TXPF: The Trans – Pecos Pipeline



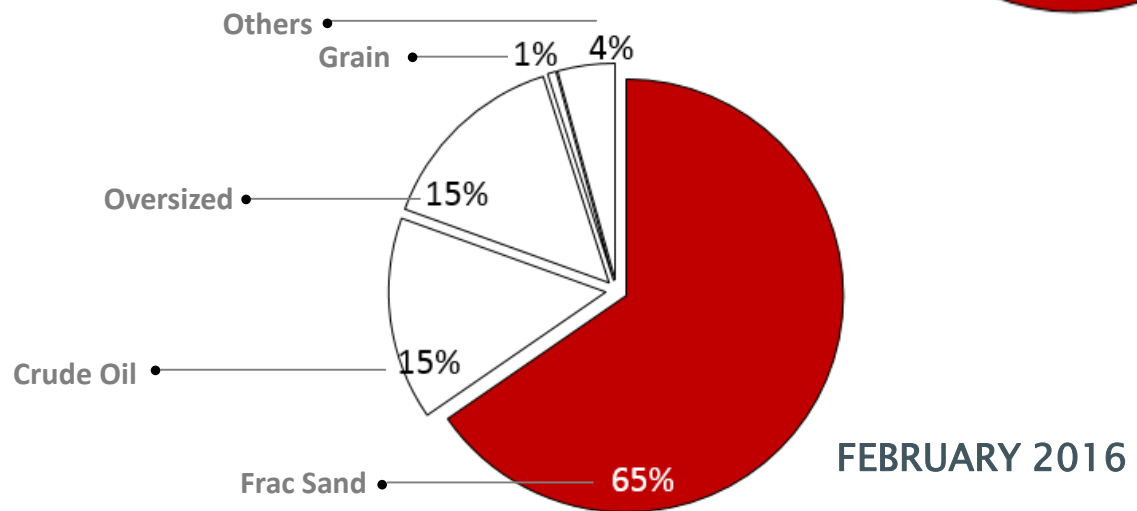
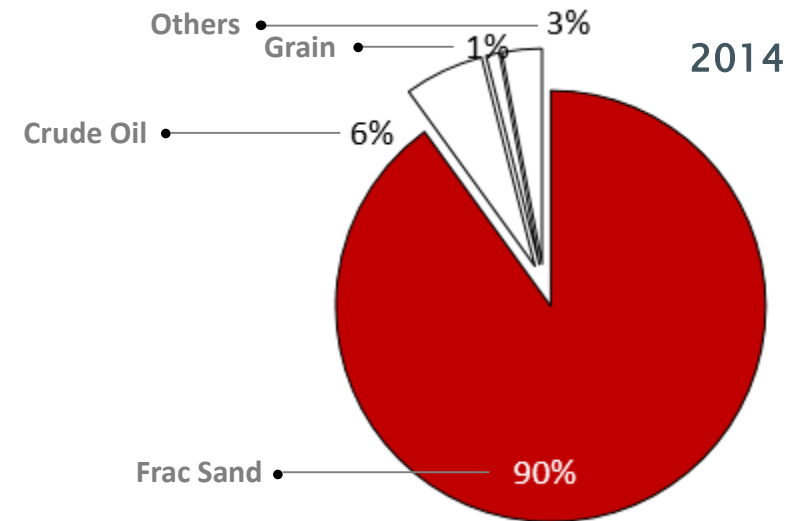
TXPF is the main freight provider in this unprecedented project in West Texas.

Pipeline is designed to transport 1.4 billion cubic feet per day of natural gas as part of an agreement with Mexico's Federal Electricity Commission.

TXPF: Diversification



With a wide expertise in the Oil and Gas sector, we are now ready to diversify.



TXPF Statistics

Grupo Mexico

Texas Pacifico (TXPF)

Texas Pacifico Today

Texas Pacifico Potential

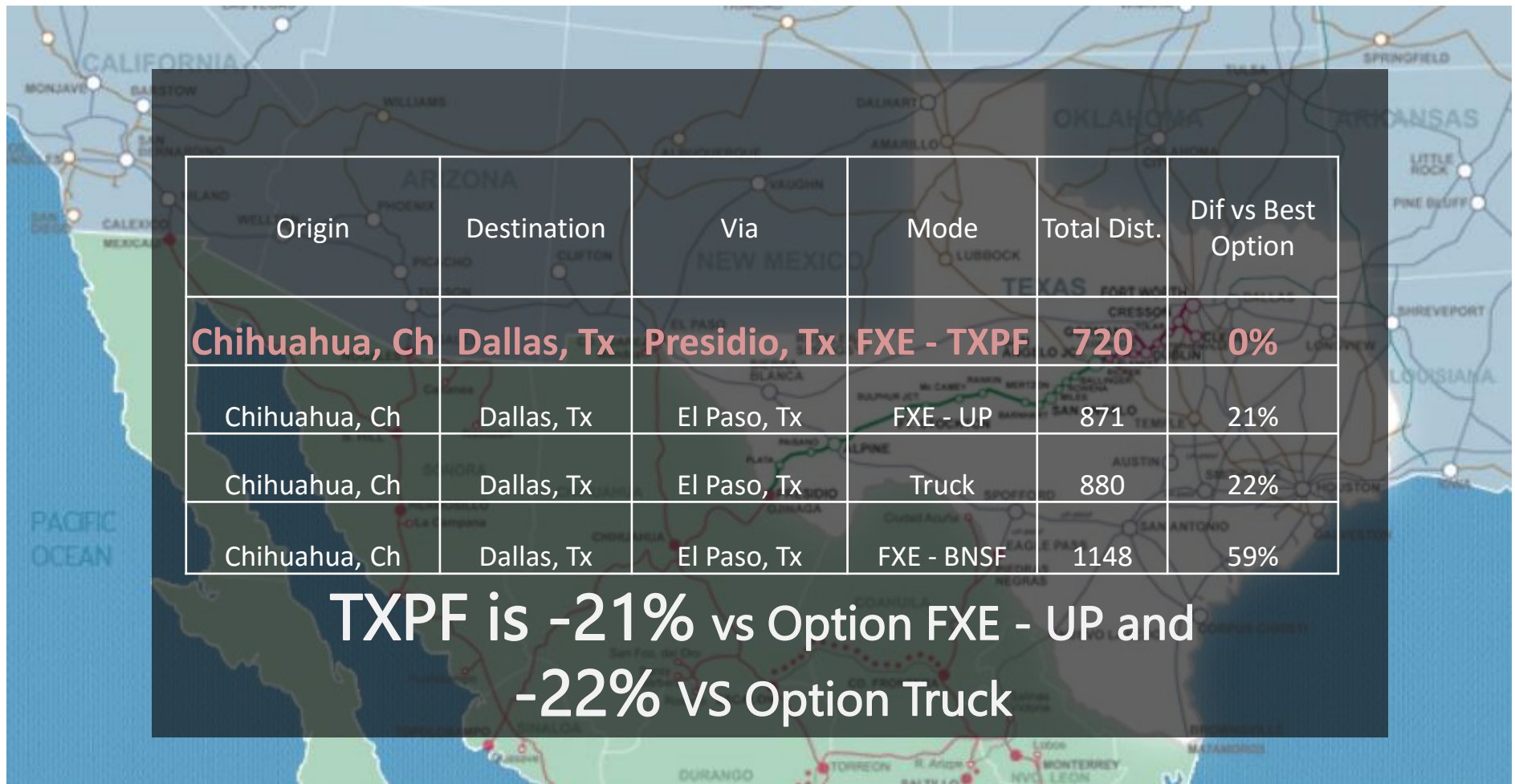
TXPF: The most connected short line in Texas

TXPF is connected with the key players in USA and Mexico, offering a seamless rail service throughout Mexico and the state of Texas.



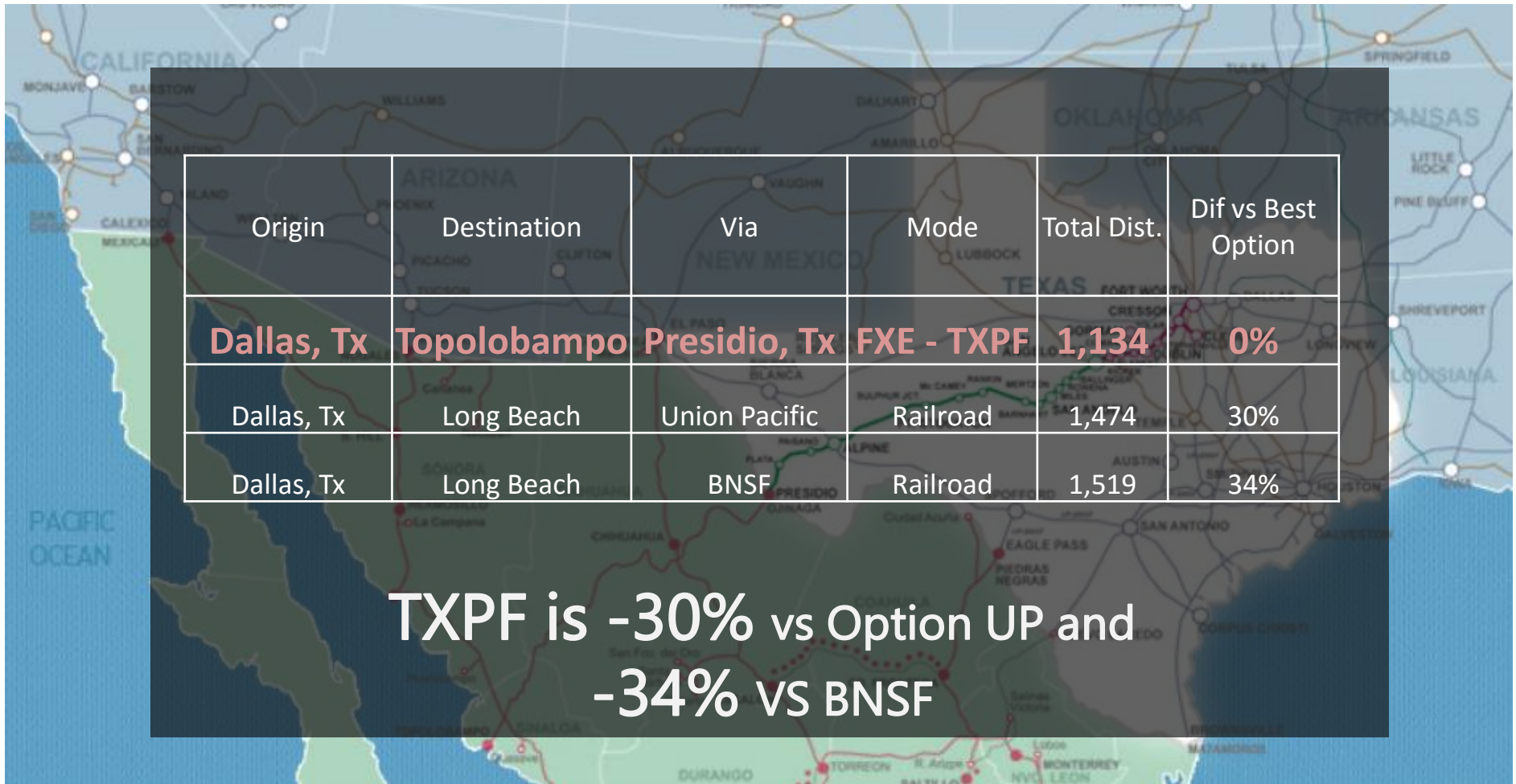
TXPF: Cross Border Traffic

Once the Bridge is open, TXPF will be a strategic logistics operator in cross-border traffic.



TXPF: Pacific Coast Ports

Once the bridge is open we become a strategic partner in the trading with the Asian Markets.



Reconstruction of the Presidio/Ojinaga International Bridge



Scheduled to be finished;
December, 2017

Reconstruction of the Presidio/Ojinaga International Bridge



| Stage | Date |
|---------------------|-----------|
| Design Complete | Apr. 2016 |
| Permitting | Sep. 2016 |
| Bidding | Nov. 2016 |
| Awarding | Feb. 2017 |
| Construction begins | Mar. 2017 |

**Scheduled to be finished;
December, 2017**



*Operating
efficiencies*

Distance

Questions or Comments?

For more information on
Texas Pacifico Transportation, Ltd,
please contact
Liz Grindstaff or Fernan Espinosa
at
325.942.8164