



**CITY OF BIRMINGHAM
MUSEUM BOARD AGENDA
556 W MAPLE
Thursday, May 2, 2024
5:00 PM**

Mission Statement: *The Birmingham Museum will explore meaningful connections with our past, in order to enrich our community and enhance its character and sustainability. Our mission is to promote understanding of Birmingham's historical and cultural legacy through preservation and interpretation of its ongoing story.*

1. Call to Order

2. Roll Call

3. Approval of the Minutes

Minutes of April 4, 2024

4. Unfinished Business

A. Finalize Pond Zone Landscape Plan (Brian Devlin of Nagy Devlin Land Design)

5. Communication and Reports

- A. Director Report
- B. Member comments
- C. Public comments

6. Next Meeting: June 6, 2024

7. Adjournment

NOTICE: Individuals with disabilities requiring accommodations for effective participation in this meeting should contact the city clerk's office at (248) 530-1880 (voice), or (248) 644-5115 (TDD) at least one day in advance to request mobility, visual, hearing or other assistance. **APPROVED MINUTES OF THE MUSEUM BOARD MEETINGS ARE AVAILABLE IN THE CITY CLERK'S OFFICE AND ON THE CITY WEBSITE AT www.bhamgov.org.** City of Birmingham, 151 Martin, Birmingham, MI 48009; 248.530.1800. Persons with disabilities that may require assistance for effective participation in this public meeting should contact the City Clerk's Office at the number (248) 530-1880, or (248) 644-5115 (for the hearing impaired) at least one day before the meeting to request help in mobility, visual, hearing, or other assistance.

Las personas con incapacidad que requieren algún tipo de ayuda para la participación en esta sesión pública deben ponerse en contacto con la oficina del escribano de la ciudad en el número (248) 530-1800 o al (248) 644-5115 (para las personas con incapacidad auditiva) por lo menos un día antes de la reunión para solicitar ayuda a la movilidad, visual, auditiva, o de otras asistencias. (Title VI of the Civil Rights Act of 1964).



**CITY OF BIRMINGHAM
MUSEUM BOARD MEETING
556 W. Maple
Thursday, April 4, 2024
5:00 PM**

Members Present: Kristy Barrett (Alternate), Alexandra Harris, Marty Logue, Jay Shell
Members Absent: Caroline Ashleigh, Bev Erickson, Pat Hughes, Judith Keefer
Student Members Present: None
Administration: Museum Director Leslie Pielack
Guests: Brian Devlin, Nagy Devlin Land Design

The meeting was called to order at 5:00 PM by Chairperson Logue.

**Approval of the Minutes
Minutes of March 7, 2024**

MOTION: by Barrett, seconded by Harris:

To approve the minutes of March 7, 2024.

VOTE: Yeas, 4
Nays, 0

Unfinished Business

Brian Devlin, Historic Landscape Architect from Nagy Devlin Land Design presented his revised landscape plan for the pond area, with details that include a complete planting scheme and specifications for stone materials, the observation platform, and bench and trash receptacles. He also presented a color rendering of the plan.

The planting plan includes an array of native plant-derived varieties that are suitable for the area around the pond, and that would support wildlife, maintain the natural character of the site's history, and permit visual access to the water features from various viewpoints. His scheme includes three basic areas; the east side of the pond, which features native wetlands plants and shrubs, including a large swath of a mixture of winterberry varieties with both male and female plants to ensure berry production.

- 1) The area that approaches/slopes toward the water would include blue flag iris, arrowhead, and other similar native plants that are native to these conditions.
- 2) The right of way/sidewalk/parking space area along Willits would include two elms, low growing juniper and potentilla due to their salt tolerance and native plant characteristics. Additional specimen trees include amelanchier and larch.
- 3) The south end of the pond has challenges due to the groundwater seeps and plan for the observation platform. The intent would be to dredge the south end of the pool to approximate its former boundary and elevate the observation platform, which is planned to be bluestone, on properly engineered supports. The steep slope to the immediate south of the planned walkway would feature meadowsweet, which may be a bit difficult to procure but is the preferred low

planting material for the slope. Some of the plants around the west end of the pond near the existing false cypress would include specimen oak leaf hydrangea and Peewee hydrangea. Ferns are included at the water's edge.

Mr. Devlin mentioned his concern that there is a significant amount of planting material and that some adjustments may be needed going forward. Removing the phragmites/common reed may be most effective in planned phasing to make sure it is removed and to coordinate new plantings. Mr. Devlin also shared a color rendering of the plan. The plan as designed would also require maintenance planning, and Mr. Devlin will be preparing a maintenance plan as part of his work on the project.

Board members agreed that the plan was well conceived and in line with the original concept plan, and appreciated the way the design would maintain visual contact with the water features. The board also was enthusiastic about the plan for the observation platform and the walkway area. There was a question about whether the City would permit the planting of two elm trees of the same variety along Willits, and a brief discussion of the limitations of disease resistance and whether different tree varieties should be considered. Elm trees are preferable if they can be used, because they reflect the historic character of the property, which is a key objective of the project. Director Pielack will research the City's policy regarding tree species and planting proximity for the next meeting. Mr. Devlin expressed an interest in meeting with AEW Engineer who designed the construction plan for the area around the pond to clarify some questions regarding the water level and elevations for the south area of the pond, as well as how to plan for the flow of the seeping springs in that area. Director Pielack suggested that she and Mr. Devlin could meet with AEW in the next month to discuss those concerns, and Mr. Devlin agreed to come back to the Museum Board in May to address these final issues. This would also permit additional review of the plan by members of the Museum Board that couldn't be at this meeting.

Communication and Reports

Museum Director Pielack reviewed the Director Report and highlighted the theme for next year's exhibit, which will be "Transportation and Transformation: Two Centuries of Shaping Birmingham and its People." The museum plans to incorporate unique stories of Birmingham relating to its growth and change due to the evolution of transportation and the impact on the community. Among the planned topics are early aviation, the Detroit United Railway, and the development of Birmingham's neighborhoods.

Member Comments

None.

Public Comments

None.

The next Regular Meeting is scheduled for Thursday, May 2, 2024, at 5:00 PM.

Ms. Logue adjourned the meeting at 6:36 PM.

LANDSCAPE DEVELOPMENT NOTES:

PLANTING

1. Installation of all plant material shall be in accordance with the latest edition of the American Association of Nurserymen Standards for Nursery Stock and with the specifications set forth by the City of Birmingham, Michigan.
2. The plant materials shall conform to the type stated on the plant list. Sizes shall be the minimum stated on the plant list or larger. All measurements shall be in accordance with the latest edition of the *American Association of Nurserymen Standards for Nursery Stock*.
3. The plant material shall be nursery grown and inspected by the Owner's representative before planting. The Owner's representative reserves the right to reject any plant material at any time.
4. Plants designated "B&P" shall be baled and burlapped with firm balls of earth.
5. Dig shrub pits one foot (1') larger than the shrub rootball, tree pits three (3) times the width of the tree rootball and backfill with one (1) part topsoil and one (1) part soil from excavated pit. Plant trees and shrubs at the same grade level at which they were planted at the nursery. If well, clay soils are evident, plant trees and shrubs slightly higher.
6. The Contractor is responsible for planting the materials at the correct grades and spacing. The plants shall be oriented to give the best appearance.
7. When the plant has been properly set, the pit shall be backfilled with the topsoil mixture, gradually filling, patting, and settling with water.
8. Trees in lawn areas to have a four foot (4') circle of mulch, four inches (4") deep, and three inches (3") away from the trunk. Shrub beds are to be mulched with shredded bark mulch to a minimum depth of three inches (3"). Only natural color shredded hardwood bark mulch will be accepted.
9. Remove all wire, wire, and burlap from the top one third (1/3) of tree and shrub root balls and from tree trunks. Remove all non-biodegradable material such as plastic or nylon completely from branches and stems.
10. All plant materials shall be pruned and injuries repaired. The amount of pruning shall be limited to the removal of dead or injured limbs and to compensate for the loss of roots from transplanting. Cuts should be flush, leaving no stubs. DO NOT apply tree paint to freshly cut wounds. Shrubs along the site perimeter shall be allowed to grow together in a natural form.
11. Organic, friable topsoil shall be evenly distributed and fine graded over all areas to receive lawns at uniform depth of four inches (4") after settlement.
12. All plantings shall be completed within three (3) months, and no later than November 30, from the date of issuance of a certificate of occupancy, if such certificate is issued during the April 1 thru September 30 period. If the certificate is issued during the October 1 thru March 31 period, the planting shall be completed no later than the ensuing May 31.
13. Backfill directly behind all curbs and along sidewalks and compact to the top of curbs or walk to support vehicle and pedestrian weight without settling.
14. All landscape areas, especially parking lot islands and landscape beds next to buildings shall be excavated of all building materials and poor soils to a depth of twelve inches to eighteen inches (12"-18") and backfilled with good, medium-textured planting soil (loam or light yellow clay loam). Add four inches to six inches (4"-6") of topsoil over the fill material and crown a minimum of six inches (6") above the top of curbs and/or walks after earth settling unless otherwise noted on the landscape plan.
15. Conversion of all asphalt and gravel areas to landscape planting beds shall be done in the following manner:
 - a. Remove all asphalt, gravel, and compacted earth to a depth of six inches to eighteen inches (6"-18") depending on the depth of the sub base and dispose of off site.
 - b. Call the City for an inspection prior to backfilling.
 - c. Replace excavated material with good, medium-textured planting soil (loam or light yellow clay loam) to a minimum of two inches (2") above the top of the curb and sidewalk, and add four inches to six inches (4"-6") of topsoil and crown to a minimum of six inches (6") above the adjacent curb and walk after earth settling, unless otherwise noted on the landscape plan.If conversion from asphalt to landscape occurs in or between an existing landscape area(s), replace excavated material from four inches to six inches (4"-6") below adjacent existing grade with good, medium-textured planting soil (loam or light yellow clay loam) and add four inches to six inches (4"-6") of topsoil to meet existing grades after earth settling.
16. Edging, where specified, shall consist of Perma-Hoc aluminum edging, spaded edge, or approved equivalent.

MATERIAL

1. Plants shall not be located within two feet (2') of the property line.
2. Required landscape material shall satisfy the criteria of the American Association of Nurserymen Standards for Nursery Stock and be:
 - a. Nursery grown;
 - b. State Department of Agriculture inspected;
 - c. No. 1 grade material with a straight, unscarred trunk, and well-developed uniform crown (park grade trees will not be accepted);
 - d. Staked, wrapped, watered, and mulched in accordance with the detail on this sheet; and e. Guaranteed for one (1) year.
3. Topsoil shall be friable, fertile soil of clay/loam character containing at least five percent (5%) but not more than twenty percent (20%) by weight of organic matter with a pH range between 6.0 and 7.0. The topsoil shall be free from clay lumps, coarse sand, plant roots, sticks, and other foreign materials.
4. The seed mixture shall consist of the following types and proportions: Kentucky Blue Grass blend "Baron/Sheridaleph" @ sixty percent (60%), Creeping Fescue @ twenty-five percent (25%), Creeping Red Fescue @ ten percent (10%), and Perennial Rye Grass @ five percent (5%). Weed content shall not exceed one percent (1%). The mix shall be applied at a rate of 200 pounds per acre.
5. Sod shall be two (2) year old "Baron/Sheridaleph" Kentucky Blue Grass blend grown in a sod nursery on loam soil.
6. Cobblestone mulch shall consist of two inch (2" - 4") cobbles six inches (6") deep over geotextile fabric.

GENERAL

1. Do not plant deciduous or evergreen trees directly over utility lines or under overhead wires. Maintain a six foot (6') distance from the centerline of utilities and twenty feet (20') from the centerline of overhead wires for planting holes. Call MISS DIG forty-eight (48) hours prior to landscape construction for field location of utility lines.
2. The Contractor agrees to guarantee all plant material for a period of one (1) year. At that time, the Owner's representative reserves the right for a final inspection. Plant material with twenty-five percent (25%) die back, as determined by the Owner's representative shall be replaced. This guarantee includes the furnishing of new plants, labor, and materials. These new plants shall also be guaranteed for a period of one (1) year.
3. The work shall consist of providing all necessary materials, labor, equipment, tools, and supervision required for the completion as indicated on the drawings.
4. The landscape areas shall be irrigated by an automatic underground irrigation system. Lawns and shrub/landscape areas shall be watered by separate zones to minimize overwatering.
5. All written dimensions override scale dimensions on the plans.
6. Report all changes, substitutions, or deletions to the Owner's representative.
7. All bidders must inspect the site and report any discrepancies to the Owner's representative.
8. All specifications are subject to change due to existing conditions.
9. The Owner's representative reserves the right to approve all plant material.

MAINTENANCE

1. The Owner of the landscaping shall perpetually maintain such landscaping in good condition so as to present a healthy, neat, and orderly appearance, free from refuse and debris.
2. The Owner shall conduct a seasonal landscape maintenance program including regular lawn cutting (at least once per week during the growing season), pruning at appropriate times, watering, and snow removal during winter.
3. The Contractor is responsible for watering and maintenance of all seed areas until a minimum of ninety percent (90%) coverage, as determined by the Owner's representative.
4. All diseased and/or dead material shall be removed within sixty (60) days following notification and shall be replaced within the next appropriate planting season or within one (1) year, whichever comes first.
5. Any debris such as lawn clippings, fallen leaves, fallen limbs, and litter shall be removed from the site on a weekly basis at the appropriate season.
6. All planting beds shall be maintained by removing weeds, fertilizing, and replenishing mulch as needed.
7. Annual beds shall be kept free of weeds and mulched with sphagnum peat of a neutral pH as needed. Perennial beds shall be kept free of weeds and mulched with fine textured shredded bark as needed. Cut spent flower stalks from perennial plants at regular intervals.

NOTES:

- * STAKE ALL EVERGREEN TREES UNDER TWELVE FEET (12') HIGH, GUY ALL EVERGREEN TREES TWELVE FEET (12') HIGH AND OVER.
- * CONTRACTOR TO VERIFY PERCOLATION OF PLANTING PIT PRIOR TO INSTALLATION. CENTER ROOTBALL IN THE PLANTING HOLE. SET ROOTBALL LEVEL TO GRADE OR SLIGHTLY ABOVE IF CLAY.
- * DO NOT PRUNE TERMINAL LEADER OR BRANCH TIPS. PRUNE ONLY TO REMOVE DEAD OR BROKEN BRANCHES.
- * SET STAKES VERTICAL AND OPPOSITE EACH OTHER.
- * REMOVE NURSERY APPLIED TREE WRAP TAPE OR STRIPS FROM TREE BRANCHES OR TRUNK. REMOVE ANY TAGS OR LABELS.

- 1) STAKE TREE AS INDICATED USING TWO INCH TO THREE INCH (2"-3") WIDE BELT-LIKE MATERIAL OF NYLON, PLASTIC, OR OTHER ACCEPTABLE MATERIAL. (DO NOT USE WIRE OR HOSE TO SECURE TREE.)
- 2) BELT STRAPS PER TREE ON OPPOSITE SIDES OF THE TREE. MAKE CONNECTION FROM TREE TRUNK TO ALLOW FOR TRUNK FLEXING. LOOSELY STAKE TREE TO STAKE HORIZONTALLY. REMOVE ALL STAKING MATERIALS AFTER ONE (1) YEAR.

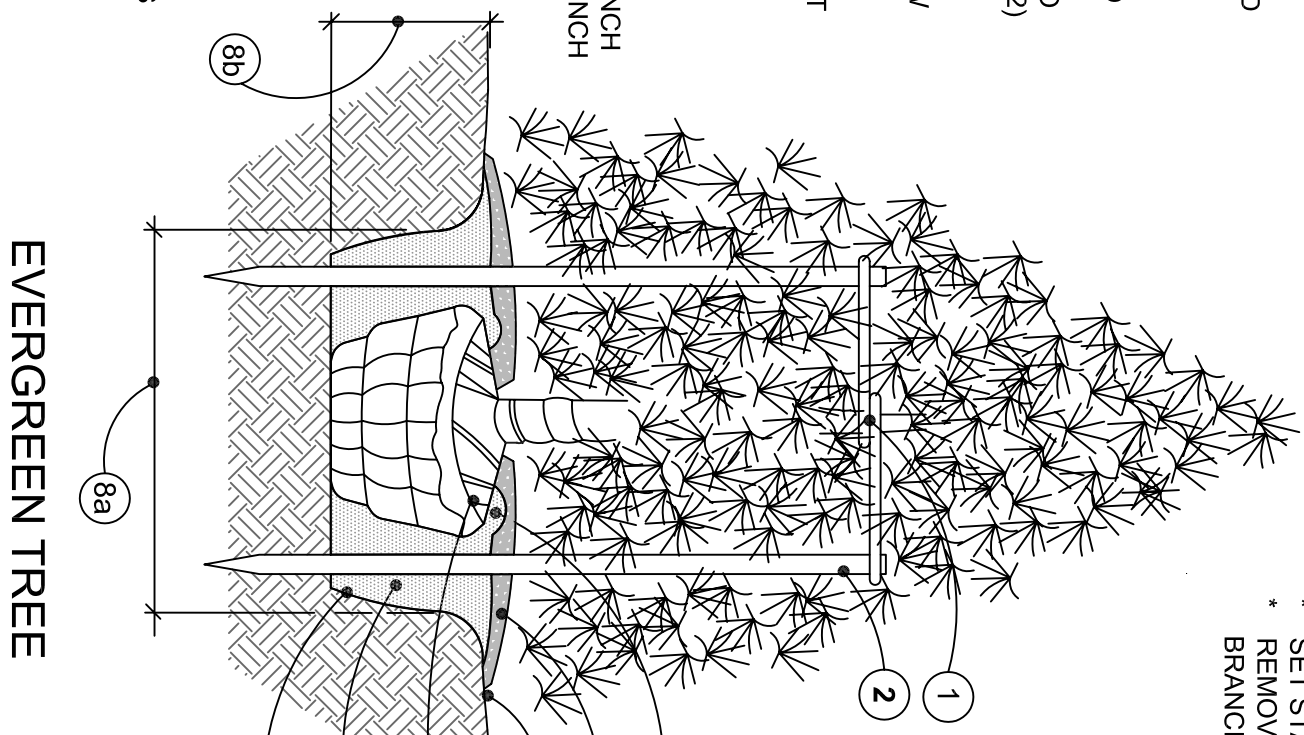
- 2) 2 x 2 HARDWOOD STAKES APPROVED EQUIVALENT POSITIONED SIX INCHES TO EIGHT INCHES (6"-8") OUTSIDE OF ROOTBALL AND EXTEND EIGHTEEN INCHES (18") BELOW TREE PIT INTO UNDISTURBED SOIL.
- 3) FOUR INCH (4") HIGH EARTH SAUCER ON INSIDE EDGE OF ROOTBALL.

- 4) SHREDED BARK MULCH OF A NATURAL COLOR (DO NOT USE WIRE OR HOSE TO SECURE TREE.) LEAVE A THREE INCH (3") CIRCLE OF BARE SOIL AT THE BASE OF THE TREE.
- 5) FINISH GRADE SLOPED AWAY FROM TREE.

- 6) FOLD DOWN OR PULL BACK STRING, BURLAP, OR PLASTIC TO EXPOSE THE TOP HALF OF ROOTBALL. REMOVE ALL NON-Biodegradable MATERIALS. DO NOT REMOVE SOIL FROM ROOTBALL.
- 7) DO NOT AMEND SOIL UNLESS PLANTING IN POOR OR SEVERELY DISTURBED SOIL OR BUILDING RUBBLE. USE WATER TO SETTLE SOIL & REMOVE AIR POCKETS AND FIRMLY SET TREE. GENTLY TAMM IF NEEDED.

- 8) a. TOP OF HOLE WIDTH EQUALS THREE TIMES THE WIDTH OF ROOTBALL. MINIMUM AT THE BASE TWELVE INCHES (12") FROM ROOTBALL.
- b. HOLE DEPTH EQUALS HEIGHT OF ROOTBALL. LEAVE BOTTOM OF PLANTING HOLE FIRMLY SET.

EVERGREEN TREE



GENERAL NOTES FOR ALL PLANTINGS:

- * DO NOT CUT CENTRAL LEADER.
- * REMOVE ALL TAGS, STRINGS, PLASTICS, AND ANY OTHER NON-Biodegradable MATERIALS (EXCEPT LABEL FOR PLANT NAME) FROM PLANT STEMS OR CROWN WHICH ARE UNSIGHTLY OR COULD CAUSE GIRDLING.
- * PLANTS SHALL BEAR THE SAME RELATION TO FINISH GRADE AS IT BORE TO THE PREVIOUS GRADE IN THE NURSERY. SET THE BASE OF THE PLANT SLIGHTLY HIGHER THAN EXISTING GRADE IF PLANTING IN CLAY SOILS.
- * CENTER THE ROOTBALL IN THE PLANTING HOLE. LEAVE THE BOTTOM OF THE PLANTING HOLE FIRMLY SET THE TREE OR SHRUB. GENTLY TAMM IF NEEDED.
- * AIR POCKETS AND FIRMLY SET THE TREE OR SHRUB. GENTLY TAMM IF NEEDED.

NOTE:
* CONTRACTOR TO VERIFY PERCOLATION OF PLANTING PIT PRIOR TO INSTALLATION.

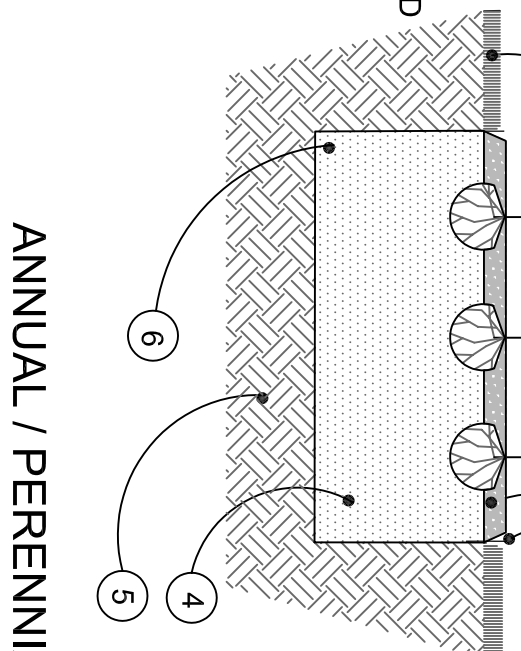
- 1) SHREDED BARK MULCH AT THREE INCH (3") MINIMUM DEPTH. MULCH SHALL BE NATURAL IN COLOR.
- 2) FORM A SAUCER WITH MULCH AND SOIL AROUND SHRUB BED.

- 3) CUT AND REMOVE BURLAP AND BINDINGS FROM THE TOP-ONE-THIRD (1/3) OF THE ROOTBALL.
- 4) 3/16" x 4" ALUMINUM EDGING (OR APPROVED EQUIVALENT) OR SPADED EDGE.

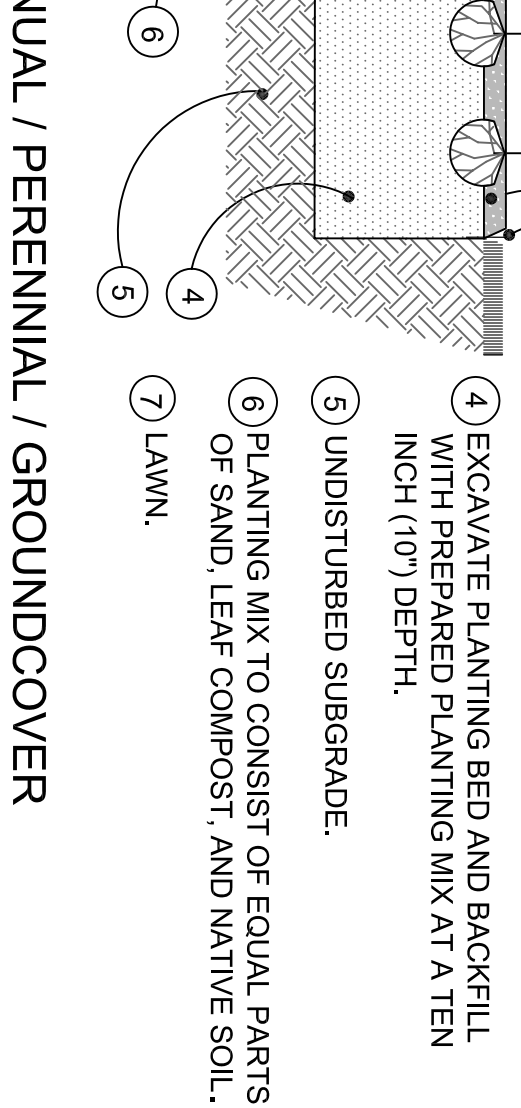
- 5) EXCAVATE PLANTING HOLE AND BACKFILL WITH PREPARED PLANTING MIX.
- 6) UNDISTURBED SUBGRADE.

- 7) LAWN.
- 8) SCARIFY SUBGRADE.

SHRUB

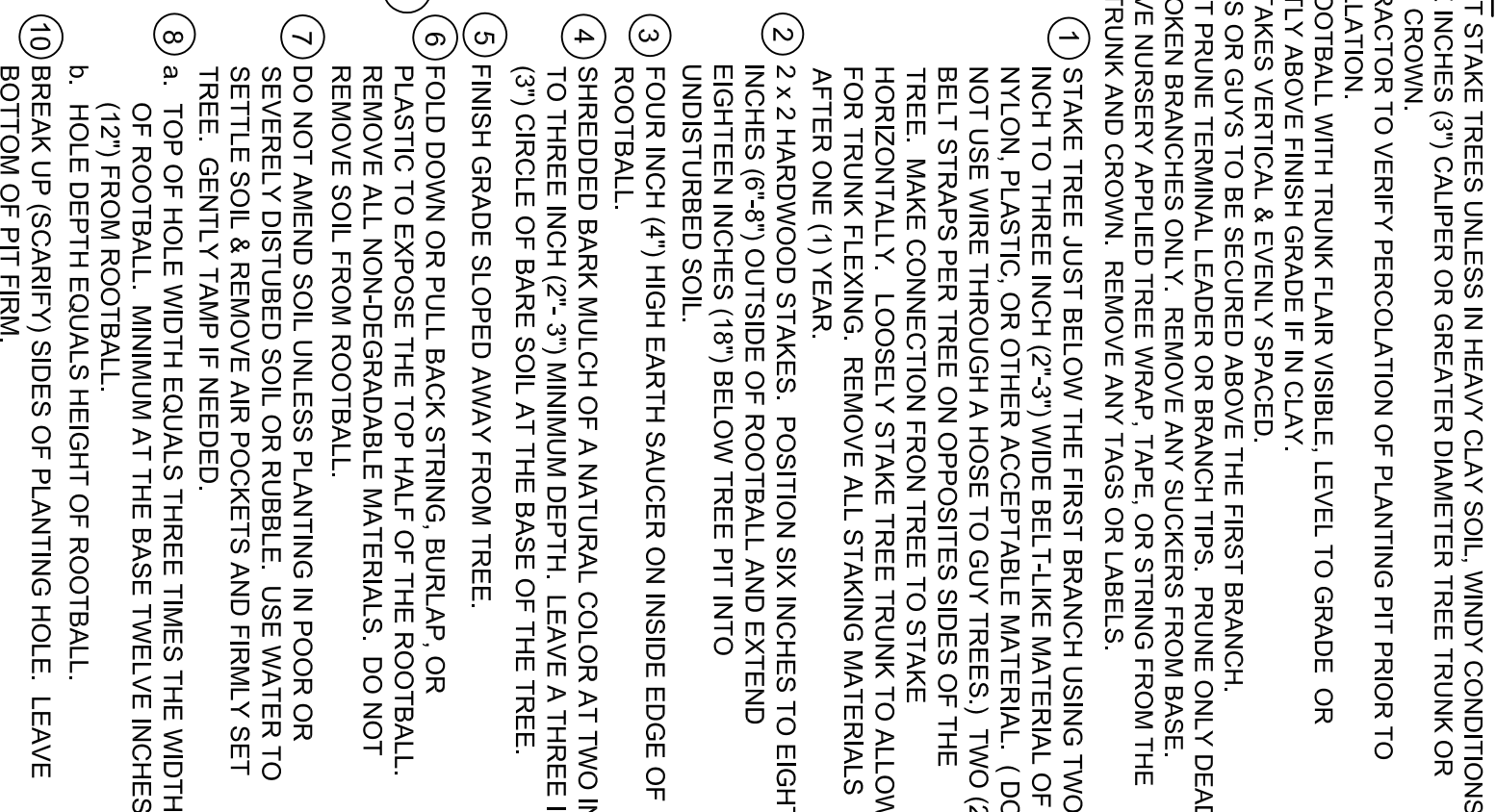


ANNUAL / PERENNIAL / GROUNDCOVER

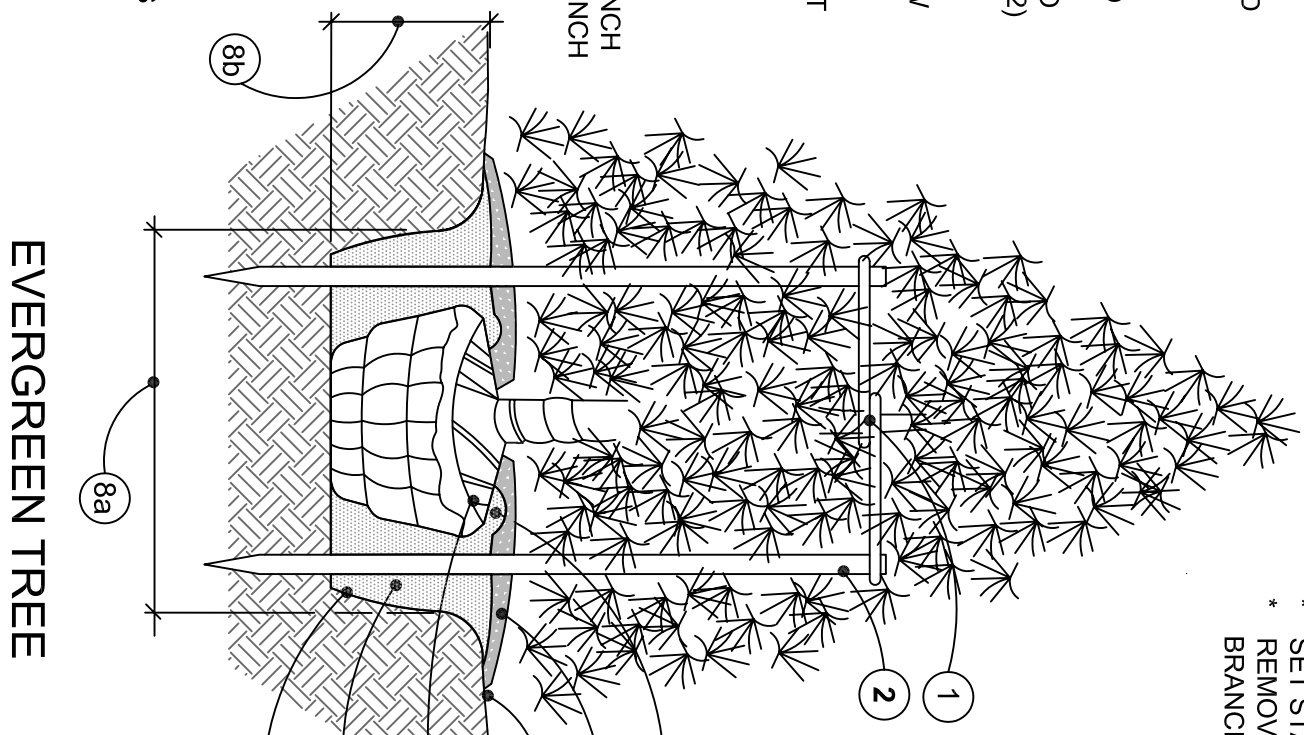


LANDSCAPE PLANTING DETAILS

DECIDUOUS TREE



EVERGREEN TREE



Dero - A Playcore Company
5522 Lakeland Avenue N.
Minneapolis, Minnesota 55429
888.337.6729

Product Specification - Helix Bike Rack by Dero

date: April 4, 2024
revised:
scale: as indicated



LANDSCAPE PLAN FOR:

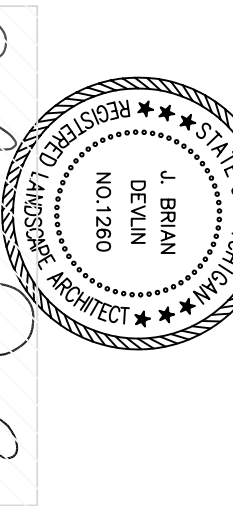
City of Birmingham
151 Martin Street
Post Office Box 3001
Birmingham, Michigan
48012-3001
(248) 530-1808

PROJECT LOCATION:

Pond Zone
Birmingham Museum/
John West Hunter Park
556 West Maple Road
Birmingham, Michigan
48009
Ms. Leslie Pielack, Director
(248) 530 1928

LANDSCAPE PLAN BY:

Nagy Devlin Land Design
31736 West Chicago Ave.
Livonia, Michigan 48150
(734) 634 9208



Handwritten signature of Nagy Devlin
AUTOCAD SIGNATURE
ORIGINAL IN BLUE

LP - 2:
LANDSCAPE
NOTES &
DETAILS

not to scale



Classic Bike U Rack

Starting at \$186.00

Standard Options: As low as \$93 Per Bike Parked

Classic Inverted U Bike Racks by CycleSafe are manufactured of heavy-gauge Sch. 40 steel pipe and coated with 1/8" thick, black Plastisol rubberized coating for scratch resistance and rust protection. Accommodating two bikes per rack, this rack design is the recommended standard by the Association of Pedestrian and Bicyclists Professionals (APBP) and meets government standards for short-term bike parking.

Classic inverted U bike racks offer multiple positions to attach a lock to secure both the wheel and bike frame. CycleSafe also offers the [Bike U Rack with Crossbar](#) for additional security.

[Read more...](#)



CHOOSE OPTIONS:

FINISH

☒ Standard: Black Plastisol

☐ Powder Coat



BIKE RACK 125 AND 130

HOME >> PRODUCTS >> BIKE RACK 125 AND 130



DuMor Bike Rack 125-30

Product Information

MODEL NUMBERS AND PRICES

OPTIONS

DRAWINGS AND SPECIFICATIONS





Director Report

DATE: May 2, 2024
TO: Museum Board
FROM: Leslie Pielack, Museum Director
SUBJECT: Director Report

Museum Board Opening—There is an opening for a regular member on the Museum Board. Applicants can contact the City of Birmingham Clerks Office at 248-530-1880 or Leslie at the museum at 248-530-1682 for an application. Interested applicants will be asked to come to a City Commission meeting for a brief interview, likely in June.

Public Budget Hearing—Update on Budget Hearing from April 27, regarding impact on Museum projects for the immediate future and over the next few years, including

- 1) Center stair carpeting for the Allen House
- 2) Upgrade to efficient furnace for the main floor of the Allen House
- 3) New fencing for the Allen and Hunter Houses
- 4) Roof repairs of both small porches to finish the Allen House exterior work
- 5) The landscape design and construction work for the next phases of the pond area

School Tours—Tours will take place this year between May 7 and May 23, and will involve 26 2nd grade classes, their teachers, and classroom chaperones and parents. Museum staff are looking forward to a successful and exciting way to introduce the students to our local history, using an approach we began last year that involves student-centered and inquiry-based learning models.

U D-M Intern—Cari Gamlin will be joining us from May through August to apply her various talents and interests to our museum operations. Cari is earning a bachelors this year with a double major in History and English and a double minor in Museum Studies and African American Studies. In addition to our school tours, she will be working on collections, research, and cataloguing. She will also be learning about museum administration and operations, and so may be sitting in on Museum Board meetings.

Cranbrook School Volunteer/Intern—A student from Cranbrook will also be gaining volunteer experience here at the museum during the month of May for a senior project. The student will be assisting with school tours, visitor services, and also with some collection projects while learning more about how a local museum operates.

'Take Your Kid to Work Day' Featured the Hunter House—The day was bright and the kids were happy, and they were having an outing with their parents; also, there were a couple of therapy dogs in the crowd. What's not to like about a visit to the oldest house in the area, seeing a spinning wheel in motion?

Collaboration with Other Museums in Transportation Exhibit—Our early aviator Harry Brooks has a direct connection to Southfield, and the Rochester Hills Van Hoosen Museum has connections to our DUR history. We're excited to do joint displays with them within our new transportation exhibit this fall. We hope it is the first of many yet to come!

The 'Other' Birmingham (U.K.); Caitlin Donnelly Interview—Birmingham, England is reaching across the pond to feature highlights about what is fun about Birmingham, Michigan. This is going to include an interview with Caitlin and a feature of 'pioneer food' from back in the day. Stay tuned for more to come!