

CONTRACT PLANS COMPONENTS

ROADWAY PLANS

INDEX OF ROADWAY PLANS

| SHEET NO. | SHEET DESCRIPTION |
|-----------|--------------------------------------------------------------|
| 1 | KEY SHEET |
| 2 | SUMMARY OF QUANTITIES |
| 3 | TYPICAL SECTIONS |
| 4-6 | ROADWAY PLANS |
| 7-9 | SIGNING AND PAVEMENT MARKINGS PLANS |
| 10 | STOP SIGN AND STREET IDENTIFICATION ASSEMBLY TYPICAL DETAILS |
| 11 | GROUND SIGN ASSEMBLY DETAILS |
| 12 | PAVEMENT MARKINGS & SIGNS DETAILS |
| 13 | SIDEWALK TYPICAL DETAILS |

THE FOLLOWING ITEMS ARE NOT REVIEWED OR ACCEPTED BY BROWARD COUNTY:

1. BROWARD COUNTY TRAFFIC ENGINEERING DIVISION DOES NOT REVIEW AND APPROVE, OR INSPECT AND ACCEPT THE FOLLOWING ITEMS FOR MAINTENANCE: PAVEMENT MARKINGS ON OR ADJACENT TO PAVER BRICKS, PAINTED ASPHALT, STAMPED ASPHALT OR PAVEMENT MARKINGS MADE OF PAVER BRICKS, RAISED INTERSECTIONS AND RELATED MARKINGS AND SIGNING, UN-WARRANTED MID-BLOCK CROSSWALKS AND RELATED MARKINGS AND SIGNING, UN-WARRANTED CROSSWALKS AND RELATED MARKINGS AND SIGNING, PAINTED/DECORATIVE CROSSWALKS, RAISED CROSSWALKS AND RELATED MARKINGS AND SIGNING, ADVANCED WARNING PAVEMENT MARKINGS FOR SPEED TABLES, BLINKER SIGNS, RECTANGULAR RAPID FLASHER BEACONS AND RELATED MARKINGS AND SIGNING, ON-STREET PARKING AND RELATED MARKINGS AND SIGNING, IN-ROAD LIGHTING AND RELATED MARKINGS AND SIGNING, GREEN BIKE LANES, FLEXIBLE DELINEATORS, DECORATIVE SIGNS AND DECORATIVE SIGN POSTS, PLANTERS, ON-SITE PAVEMENT MARKINGS AND SIGNING, OFF-SITE PAVEMENT MARKINGS AND SIGNING IN RIGHT-OF-WAY THAT IS NOT DEDICATED FOR PUBLIC USE, SIDEWALK WORK OR ASPHALT WORK.
2. THE CITY ENGINEER IS RESPONSIBLE FOR THE REVIEW AND APPROVAL OF THE DESIGN AND OPERATION OF THE PROJECT, AND FOR THE INSPECTION AND ACCEPTANCE OF THE FOLLOWING ITEMS THAT WILL BE MAINTAINED BY THE CITY: PAVEMENT MARKINGS ON OR ADJACENT TO PAVER BRICKS, PAINTED ASPHALT, STAMPED ASPHALT OR PAVEMENT MARKINGS MADE OF PAVER BRICKS, PAVEMENT MARKINGS ON OR ADJACENT TO PAINTED ASPHALT, RAISED INTERSECTIONS AND RELATED MARKINGS AND SIGNING, UN-WARRANTED MID-BLOCK CROSSWALKS AND RELATED MARKINGS AND SIGNING, UN-WARRANTED CROSSWALKS AND RELATED MARKINGS AND SIGNING, PAINTED/DECORATIVE CROSSWALKS, RAISED CROSSWALKS AND RELATED MARKINGS AND SIGNING, ADVANCED WARNING PAVEMENT MARKINGS FOR SPEED TABLES, BLINKER SIGNS, RECTANGULAR RAPID FLASHER BEACONS AND RELATED MARKINGS AND SIGNING, ON-STREET PARKING AND RELATED MARKINGS AND SIGNING, IN-ROAD LIGHTING AND RELATED MARKINGS AND SIGNING, GREEN BIKE LANES, FLEXIBLE DELINEATORS, DECORATIVE SIGNS AND DECORATIVE SIGN POSTS, PLANTERS, ON-SITE PAVEMENT MARKINGS AND SIGNING, OFF-SITE PAVEMENT MARKINGS AND SIGNING IN RIGHT-OF-WAY THAT IS NOT DEDICATED FOR PUBLIC USE, SIDEWALK WORK AND ASPHALT WORK.
3. ALL TRAFFIC CONTROL DEVICES MAINTAINED BY BROWARD COUNTY, THAT ARE REMOVED OR DAMAGED BY CONSTRUCTION, SHALL BE REPLACED BY CONTRACTOR USING CURRENT BROWARD COUNTY TRAFFIC ENGINEERING DIVISION STANDARDS.

GOVERNING STANDARD PLANS:
Florida Department of Transportation, FY2020-21 Standard plans for Road and Bridge Construction and applicable Interim Revisions (Irs).

Standard Plans for Road Construction and associated Irs are available at the following website:
<http://www.fdot.gov/design/Standardplans.shtm>

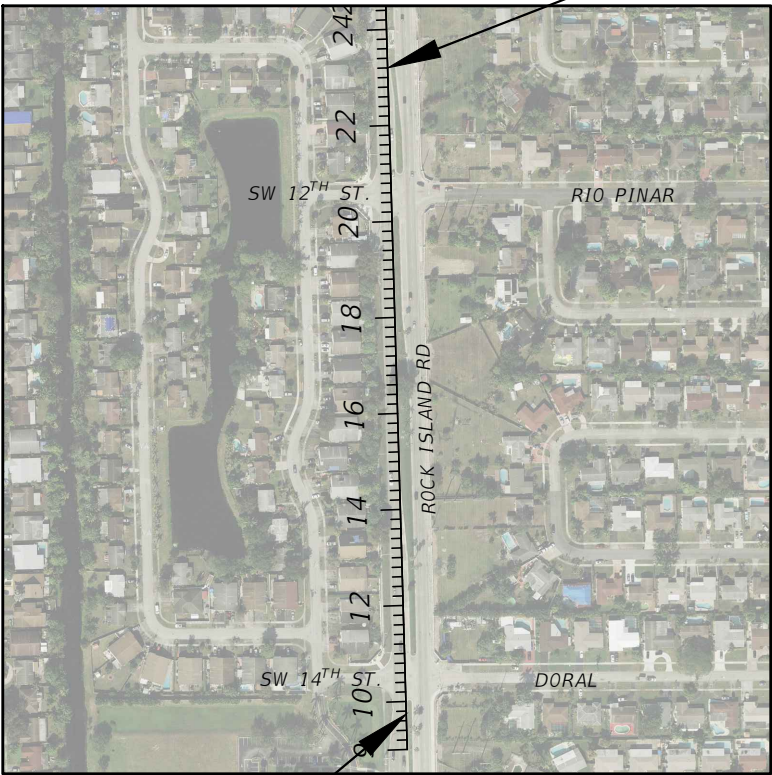
GOVERNING STANDARD SPECIFICATIONS:
Florida Department of Transportation, JULY 2020 Standard Specifications for Road and Bridge Construction at the following website:
<http://www.fdot.gov/programmanagement/Implemented/SpecBooks>

CITY OF NORTH LAUDERDALE

CONTRACT PLANS

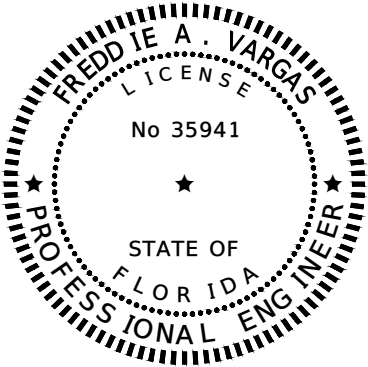
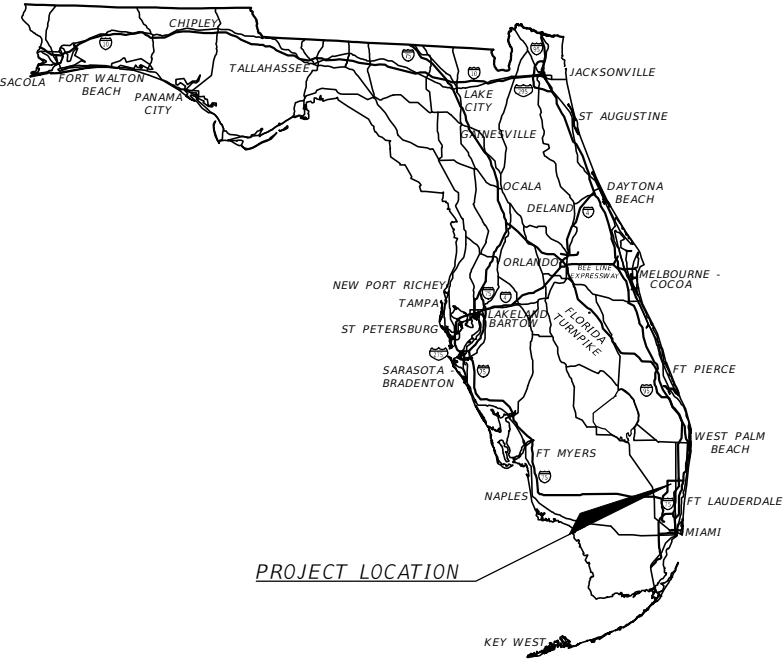
ROCK ISLAND ROAD
DORAL TO TAM OSHANTER BLVD.
TURN LANE IMPROVEMENTS

ROADWAY PLANS



BEGIN PROJECT
STA. 9+74.97

END PROJECT
STA. 23+23.88



THIS ITEM HAS BEEN DIGITALLY
SIGNED AND SEALED BY:

ON THE DATE ADJACENT TO THE SEAL
PRINTED COPIES OF THIS DOCUMENT ARE
NOT CONSIDERED SIGNED AND SEALED.
THE SIGNATURE MUST BE VERIFIED
IN THE ELECTRONIC DOCUMENTS.

FREDDIE A. VARGAS
P.E. LICENSE NO. 35941
CARNAHAN PROCTOR & CROSS, INC.
814 S. MILITARY TRAIL
DEERFIELD BEACH, FL 33442

ROADWAY PLANS
ENGINEER OF RECORD:

FREDDIE A. VARGAS, P.E.
P.E. NO.:35941
CARNAHAN PROCTOR & CROSS, INC.
814 S. MILITARY TRAIL
DEERFIELD BEACH, FL 33442
TEL. NO.: 954-972-3959
CONTRACT NO.: 200518060
CERTIFICATE OF AUTHORIZATION NO.: 2936

| CONSTRUCTION CONTRACT NO. | FISCAL YEAR | SHEET NO. |
|------------------------------|----------------|--------------|
| TBD | 20 | 1 |

| SUMMARY OF ROADWAY QUANTITIES | | | |
|-----------------------------------------|-------------------------------------------------------------------------------------|--------------------|------|
| ITEM NO. | ITEM DESCRIPTION | ESTIMATED QUANTITY | UNIT |
| 101-1 | MOBILIZATION | 1.00 | LS |
| 102-1 | MAINTENANCE OF TRAFFIC | 1.00 | LS |
| 110-1-1 | CLEARING AND GRUBBING | 1.00 | LS |
| 110-4-10 | REMOVE OF EXISITNG CONCRETE | 66.00 | SY |
| 160-4 | TYPE B STABILIZATION (12") | 430.00 | SY |
| 210-1-8 | LIMEROCK STABILIZED BASE, 4" (FOR PAVERS) | 124.00 | SY |
| 285-706 | OPTIONAL BASE. BASE GROUP 06 (8") | 411.00 | SY |
| 327-70-19 | MILLING EXIST ASPH PAVT, 3/4" AVG DEPTH | 579.00 | SY |
| 334-1-13 | SUPERPAVE ASPHALTIC CONC., TRAFFIC C, (2") (SP-9.5) | 43.00 | TN |
| 337-7-82 | ASPHALT CONCRETE FRICTION COURSE, TRAFFIC C, (1") FC-9.5, PG 76-22 | 53.00 | TN |
| 425-5 | MANHOLE, ADJUST | 2.00 | EA |
| 520-1-7 | CONCRETE CURB & GUTTER, TYPE E | 270.00 | LF |
| 520-1-10 | CONCRETE CURB & GUTTER, TYPE F | 996.00 | LF |
| 522-2 | CONCRETE SIDEWALK AND DRIVEWAYS, 6" THICK | 63.00 | SY |
| 526-1-1 | BRICK PAVERS, ARCHITECTURAL, F&I ROADWAY (MEDIAN) | 124.00 | SY |
| 527-2 | DETECTABLE WARNINGS | 66.50 | SF |
| | | | |
| SUMMARY OF SIGNAGE & MARKING QUANTITIES | | | |
| ITEM NO. | ITEM DESCRIPTION | ESTIMATED QUANTITY | UNIT |
| 700-1-12 | SINGLE POST SIGN, F&I GROUND MOUNT, UP TO 12-20 SF | 2.00 | AS |
| 700-1-50 | SINGLE POST SIGN, RELOCATE | 3.00 | AS |
| 700-3-101 | SIGN PANEL, FURNISH & INSTALL GROUND MOUNT, UP TO 12 SF | 4.00 | EA |
| 706-1-1 | RAISED PAVEMENT MARKER | 111.00 | EA |
| 710-11123 | PAINTED PAVEMENT MARKINGS, STANDARD, WHITE, SOLID FOR CROSSWALK AND ROUNDABOUT, 12" | 383.00 | LF |
| 710-11125 | PAINTED PAVEMENT MARKINGS, STANDARD, WHITE, SOLID FOR STOP LINE OR CROSSWALK, 24" | 72.00 | LF |
| 710-11201 | PAINTED PAVEMENT MARKINGS, STANDARD, YELLOW, SOLID, 6" | 0.03 | GM |
| 711-11125 | THERMOPLASTIC, STANDARD, WHITE, SOLID, 24" FOR STOP LINE AND CROSSWALK | 72.00 | LF |
| 711-11170 | THERMOPLASTIC, STANDARD, WHITE, ARROW | 18.00 | EA |
| 711-12231 | THERMOPLASTIC, REFURBISHMENT, WHITE, SKIP, 6" | 0.06 | GM |
| 711-16101 | THERMOPLASTIC, STANDARD, WHITE, SOLID, 6" | 0.20 | GM |
| 711-16201 | THERMOPLATIC, STANDARD, YELLOW, SOLID, 6" | 0.27 | GM |
| PAY ITEMS NOTES: | | | |
| 210-1-8 | INSTALLATION MUST FOLLOW FDOT STANDARD SPECIFICATIONS SECTION 526. | | |
| 526-1-1 | INCLUDES COST OF BRICK PAVERS, BEDDING SAND, AND GEOTEXTILE FABRIC. | | |

FREDDIE A. VARGAS P.E.
LICENSE NO. 35941

| REVISIONS | | | | CITY OF NORTH LAUDERDALE | SUMMARY OF QUANTITIES | | SHEET NO. |
|-----------|-------------|------|-------------|--------------------------|-----------------------|----------------------|-----------|
| DATE | DESCRIPTION | DATE | DESCRIPTION | | | | |
| ---- | ---- | | | ROAD NO. | COUNTY | FINANCIAL PROJECT ID | |
| | | | | ---- | BROWARD | ---- | 2 |

FREDDIE A. VARGAS, P.E.
P.E. LICENSE NUMBER 35941
CARNAHAN PROCTOR & CROSS, INC.
814 S. MILITARY TRAIL
DEERFIELD BEACH, FL 33442
CERTIFICATE OF AUTHORIZATION 2936



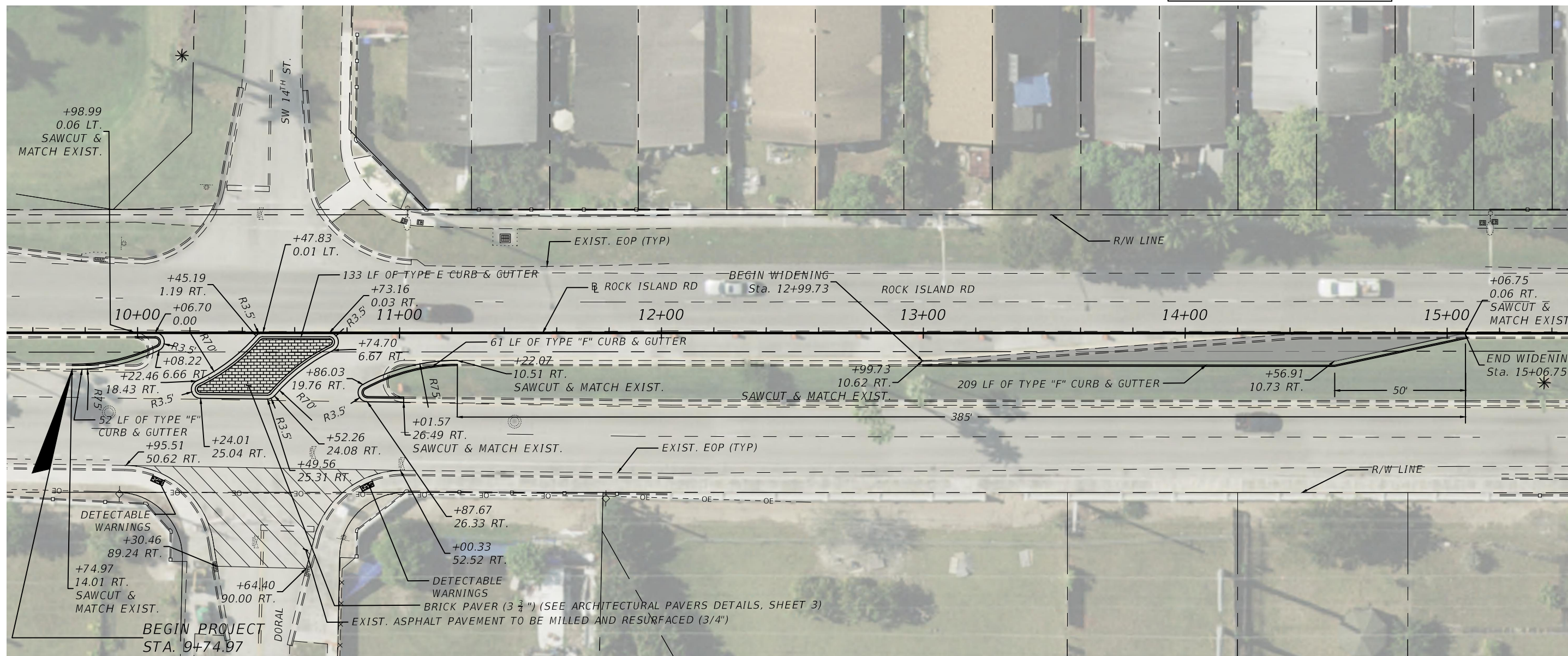
TRAFFIC DATA

WIDENING DETAIL 2

NOTE: ACTUAL WIDTH OF BASE WIDENING MAY VARY DUE TO ACTUAL EXISTING PAVEMENT WIDTH. A UNIFORM WIDTH BASE WIDENING STRIP MAY BE CONSTRUCTED AT NO ADDITIONAL COMPENSATION.

| | | | | | | | | | |
|------------------|--------------------|-------------|--------------------|-----------------------------------------------------------------------------------------------------------------------------------------------------------------------------------|---------------------------------|---------------|-----------------------------|-------------------------|------------------|
| REVISIONS | | | | FREDDIE A. VARGAS, P.E. P.E. LICENSE NUMBER 35941 CARNAHAN PROCTOR & CROSS, INC. 814 S. MILITARY TRAIL DEERFIELD BEACH, FL 33442 CERTIFICATE OF AUTHORIZATION 2936 | CITY OF NORTH LAUDERDALE | | | <i>TYPICAL SECTIONS</i> | SHEET NO. |
| DATE | DESCRIPTION | DATE | DESCRIPTION | | ROAD NO. | COUNTY | FINANCIAL PROJECT ID | | |
| ---- | ----- | | | | ---- | BROWARD | ---- | | 3 |

| | |
|-------------------------------------------------------------------------------------|---------------------------------------------|
|  | <i>WIDENING</i> |
|  | <i>BRICK PAVER</i> |
|  | <i>MILLING & RESURFACING (3/4")</i> |



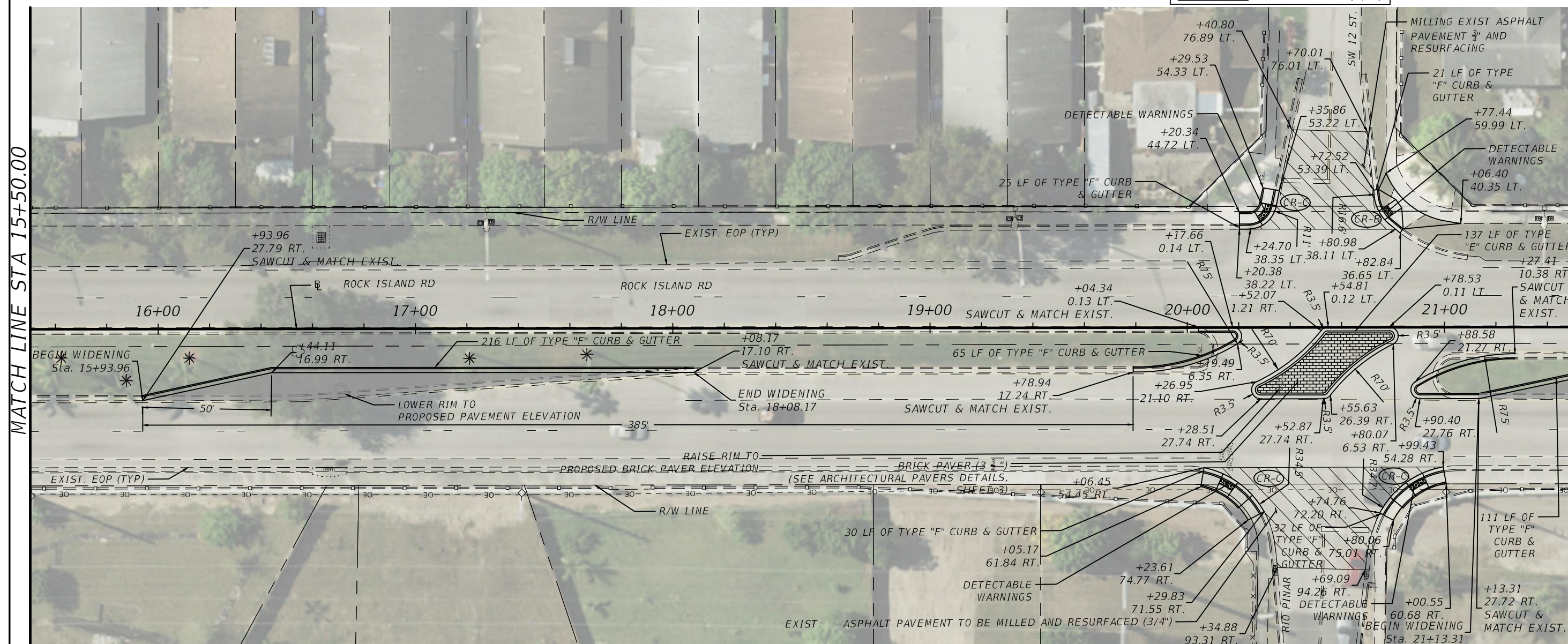
1. CONTRACTOR TO OBTAIN MOT PERMIT FROM THE CITY OF NORTH LAUDERDALE PRIOR TO THE BEGINNING OF THE CONSTRUCTION.

MATCH LINE STA 15+50.00

THE OFFICIAL RECORD OF THIS SHEET IS THE ELECTRONIC FILE DIGITALLY SIGNED AND SEALED UNDER RULE 61G15-23.004, F.A.C.

| REVISIONS | | | | FREDDIE A. VARGAS, P.E. P.E. LICENSE NUMBER 35941 CARNAHAN PROCTOR & CROSS, INC. 814 S. MILITARY TRAIL DEERFIELD BEACH, FL 33442 CERTIFICATE OF AUTHORIZATION 2936 | CITY OF NORTH LAUDERDALE | | | ROADWAY PLANS | LICENSE NO. 35941 |
|-----------|-------------|------|-------------|-----------------------------------------------------------------------------------------------------------------------------------------------------------------------------------|--------------------------|--------|----------------------|---------------|-------------------|
| DATE | DESCRIPTION | DATE | DESCRIPTION | | | | | | SHEET NO. |
| | | | | | ROAD NO. | COUNTY | FINANCIAL PROJECT ID | | |
| | | | | | BROWARD | | | | 4 |

| | |
|-------------------------------------------------------------------------------------|--------------------------------------------|
|  | <i>WIDENING</i> |
|  | <i>BRICK PAVER</i> |
|  | <i>MILLING & RESURFACING (3/4"</i> |



1. CONTRACTOR TO OBTAIN MOT PERMIT FROM THE CITY OF NORTH LAUDERDALE PRIOR TO THE BEGINNING OF THE CONSTRUCTION.
2. BRANCHES ENCRDACHING IN AERIAL SPACE 20' ABOVE CURRENT CURB FROM TREE LOCATED NEAR STA. 16 + 47 MUST BE TRIMMED AS RECOMMENDED BY CONTRACTOR'S ARBORIST.

SHEET
NO.

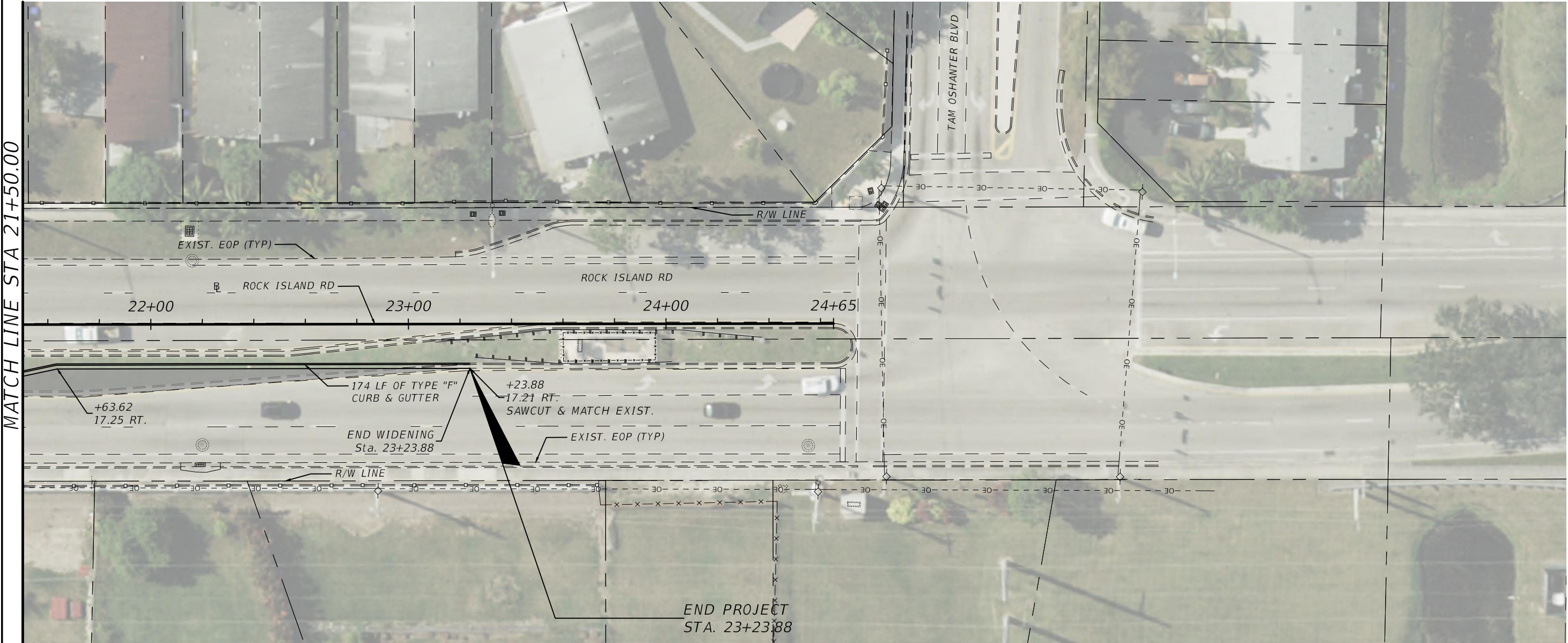
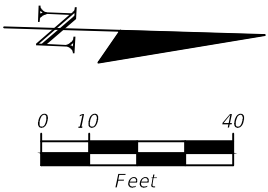
MATCH LINE STA 21+50.00

MAI CH LINE 31A ZIT

| REVISIONS | | | | FREDDIE A. VARGAS, P.E. P.E. LICENSE NUMBER 35941 CARNAHAN PROCTOR & CROSS, INC. 814 S. MILITARY TRAIL DEERFIELD BEACH, FL 33442 CERTIFICATE OF AUTHORIZATION 2936 | CITY OF NORTH LAUDERDALE | | | ROADWAY PLANS | SHEET NO. 5 |
|-----------|-------------|------|-------------|-----------------------------------------------------------------------------------------------------------------------------------------------------------------------------------|--------------------------|---------|----------------------|---------------|--------------------|
| DATE | DESCRIPTION | DATE | DESCRIPTION | | ROAD NO. | COUNTY | FINANCIAL PROJECT ID | | |
| | | | | | | BROWARD | | | |

LEGEND

WIDENING



MATCH LINE STA 21+50.00

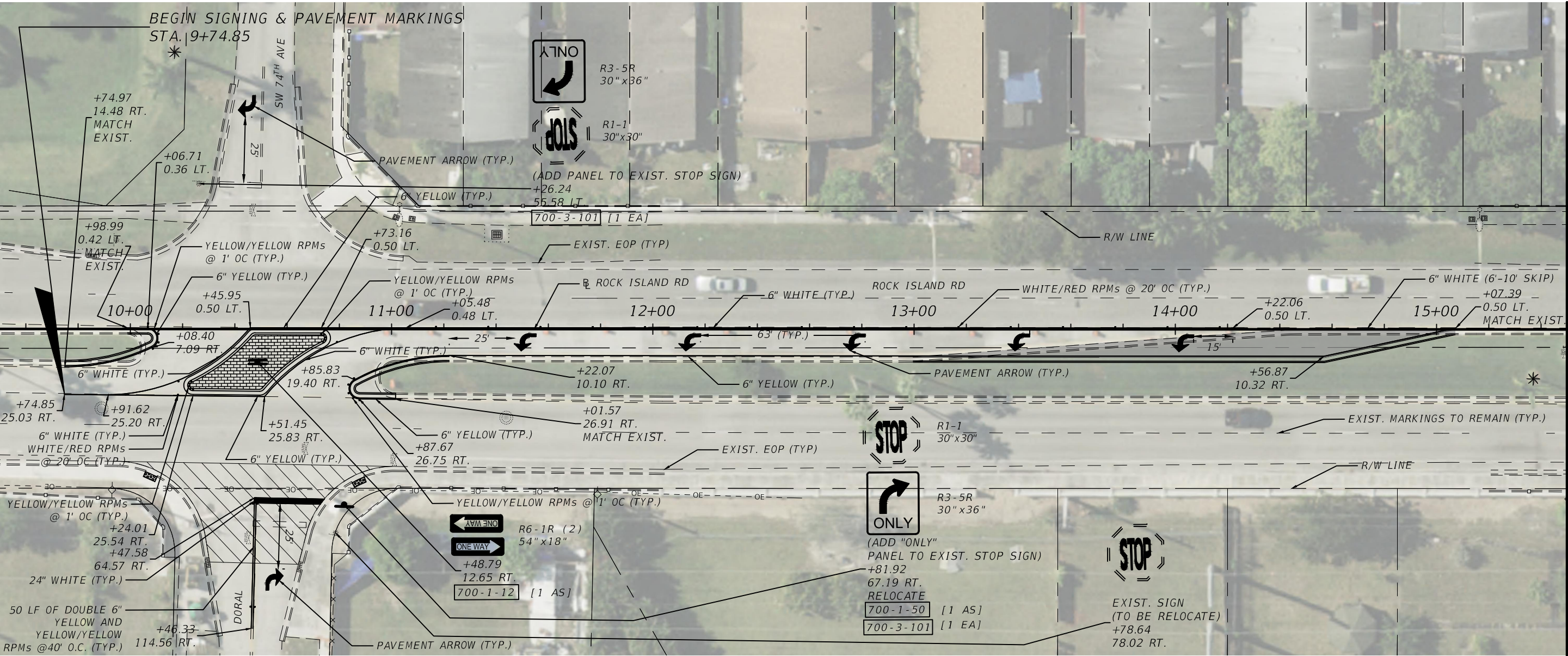
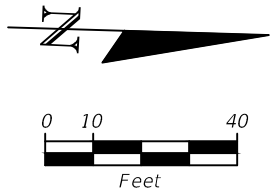
NOTE:
1. CONTRACTOR TO OBTAIN MOT PERMIT FROM THE CITY OF NORTH LAUDERDALE PRIOR TO THE BEGINNING OF THE CONSTRUCTION.

FREDDIE A. VARGAS P.E.
LICENSE NO. 35941

| REVISIONS | | | | CITY OF NORTH LAUDERDALE | ROADWAY PLANS | | SHEET NO. 6 |
|-----------|-------------|------|-------------|--------------------------|---------------|----------------------|----------------|
| DATE | DESCRIPTION | DATE | DESCRIPTION | | | | |
| | | | | ROAD NO. | COUNTY | FINANCIAL PROJECT ID | |
| | | | | | BROWARD | | |

FREDDIE A. VARGAS, P.E.
P.E. LICENSE NUMBER 35941
CARNAHAN PROCTOR & CROSS, INC.
814 S. MILITARY TRAIL
DEERFIELD BEACH, FL 33442
CERTIFICATE OF AUTHORIZATION 2936

THE OFFICIAL RECORD OF THIS SHEET IS THE ELECTRONIC FILE DIGITALLY SIGNED AND SEALED UNDER RULE 61G15-23.004, F.A.C.

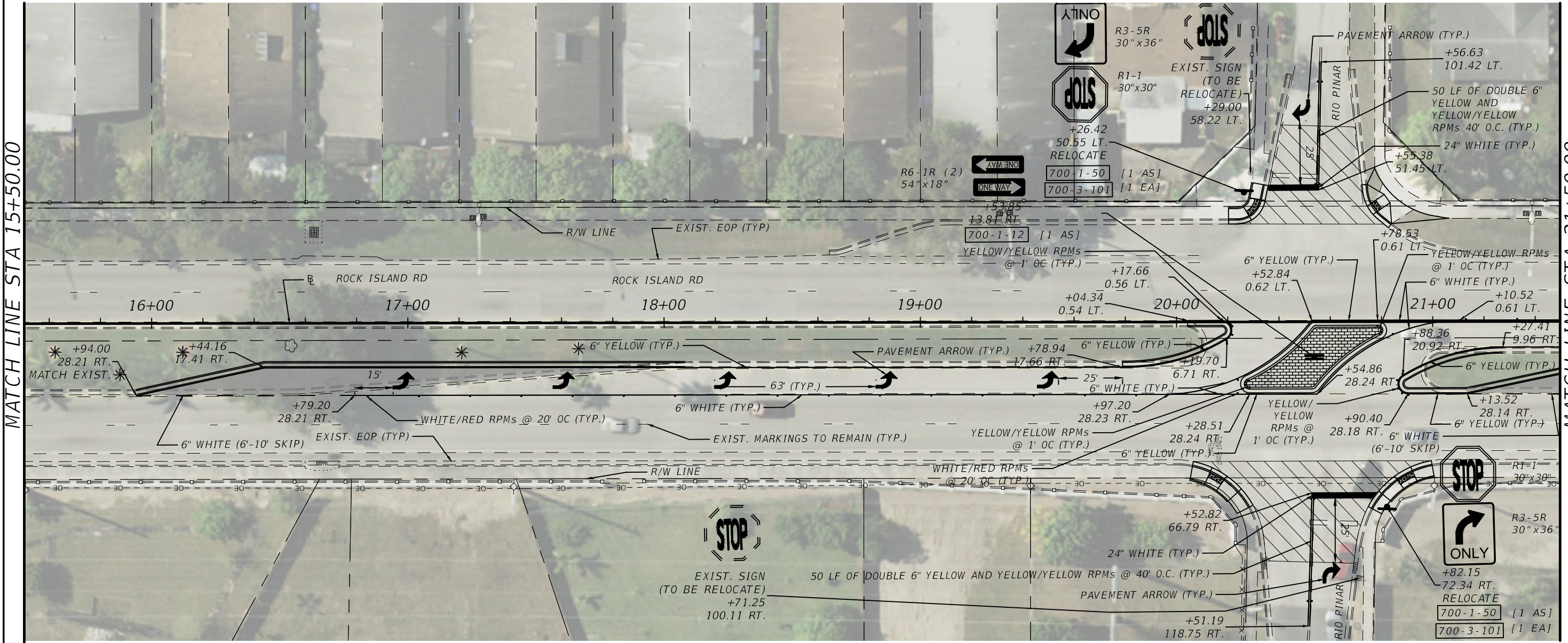
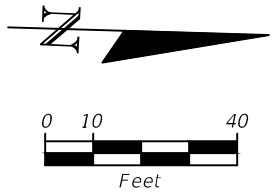


- NOTE:
1. CONTRACTOR TO OBTAIN MOT PERMIT FROM THE CITY OF NORTH LAUDERDALE PRIOR TO THE BEGINNING OF THE CONSTRUCTION.
 2. CONTRACTOR TO INSTALL TEMPORARY FDOT PAINT FOR PAVEMENT MARKINGS AND INSTALL THERMOPLASTIC PAVEMENT MARKINGS AFTER 30 DAYS.
 3. ANY PAVEMENT MARKINGS OR SIGNS DAMAGED DURING CONSTRUCTION SHALL BE REPLACED ACCORDING TO BROWARD COUNTY TRAFFIC ENGINEERING STANDARDS.
 4. ALL EXISTING STREET NAME SIGNS SHALL REMAIN IN PLACE OR BE RELOCATED OR REPLACED.

| REVISIONS | | | | FREDDIE A. VARGAS, P.E. P.E. LICENSE NUMBER 35941 CARNAHAN PROCTOR & CROSS, INC. 814 S. MILITARY TRAIL DEERFIELD BEACH, FL 33442 CERTIFICATE OF AUTHORIZATION 2936 | CITY OF NORTH LAUDERDALE | | | <i>SIGNING AND PAVEMENT MARKINGS PLANS</i> | SHEET NO. |
|-----------|-------------|------|-------------|-----------------------------------------------------------------------------------------------------------------------------------------------------------------------------------|--------------------------|---------|----------------------|------------------------------------------------|--------------|
| DATE | DESCRIPTION | DATE | DESCRIPTION | | ROAD NO. | COUNTY | FINANCIAL PROJECT ID | | 7 |
| | | | | | | BROWARD | | | |

MATCH LINE STA 15+50.00

THE OFFICIAL RECORD OF THIS SHEET IS THE ELECTRONIC FILE DIGITALLY SIGNED AND SEALED UNDER RULE 61G15-23.004, F.A.C.



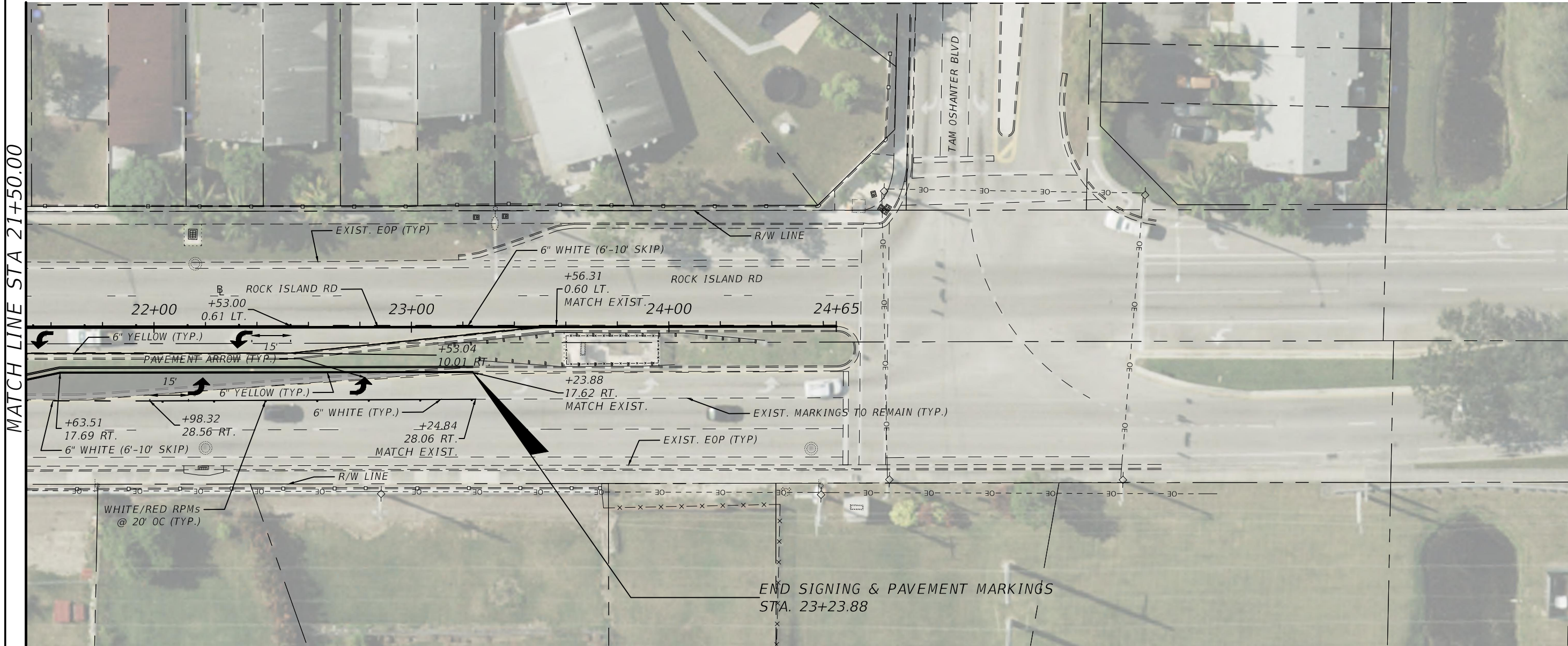
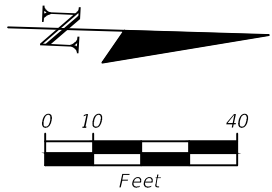
MATCH LINE STA 15+50.00

MATCH LINE STA 21+50.00

- NOTE:
- 1. CONTRACTOR TO OBTAIN MOT PERMIT FROM THE CITY OF NORTH LAUDERDALE PRIOR TO THE BEGINNING OF THE CONSTRUCTION.
 - 2. CONTRACTOR TO INSTALL TEMPORARY FDOT PAINT FOR PAVEMENT MARKINGS AND INSTALL THERMOPLASTIC PAVEMENT MARKINGS AFTER 30 DAYS.
 - 3. ANY PAVEMENT MARKINGS OR SIGNS DAMAGED DURING CONSTRUCTION SHALL BE REPLACED ACCORDING TO BROWARD COUNTY TRAFFIC ENGINEERING STANDARDS.
 - 4. ALL EXISTING STREET NAME SIGNS SHALL REMAIN IN PLACE OR BE RELOCATED OR REPLACED.

FREDDIE A. VARGAS P.E.
LICENSE NO. 35941

| R E V I S I O N S | | | | FREDDIE A. VARGAS, P.E. P.E. LICENSE NUMBER 35941 CARNAHAN PROCTOR & CROSS, INC. 814 S. MILITARY TRAIL DEERFIELD BEACH, FL 33442 CERTIFICATE OF AUTHORIZATION 2936 | CITY OF NORTH LAUDERDALE | | | <i>SIGNING AND PAVEMENT MARKINGS PLANS</i> | SHEET NO. |
|-------------------|-------------|------|-------------|-----------------------------------------------------------------------------------------------------------------------------------------------------------------------------------|--------------------------|---------|--|------------------------------------------------|--------------|
| DATE | DESCRIPTION | DATE | DESCRIPTION | | | | | | ROAD NO. |
| | | | | | | BROWARD | | | 8 |
| | | | | | | | | | |



- NOTE:
- 1. CONTRACTOR TO OBTAIN MOT PERMIT FROM THE CITY OF NORTH LAUDERDALE PRIOR TO THE BEGINNING OF THE CONSTRUCTION.
 - 2. CONTRACTOR TO INSTALL TEMPORARY FDOT PAINT FOR PAVEMENT MARKINGS AND INSTALL THERMOPLASTIC PAVEMENT MARKINGS AFTER 30 DAYS.
 - 3. ANY PAVEMENT MARKINGS OR SIGNS DAMAGED DURING CONSTRUCTION SHALL BE REPLACED ACCORDING TO BROWARD COUNTY TRAFFIC ENGINEERING STANDARDS.

FREDDIE A. VARGAS P.E.
LICENSE NO. 35941

| REVISIONS | | | | FREDDIE A. VARGAS, P.E. P.E. LICENSE NUMBER 35941 CARNAHAN PROCTOR & CROSS, INC. 814 S. MILITARY TRAIL DEERFIELD BEACH, FL 33442 CERTIFICATE OF AUTHORIZATION 2936 | CITY OF NORTH LAUDERDALE | | | <i>SIGNING AND PAVEMENT MARKINGS PLANS</i> | SHEET NO. |
|-----------|-------------|------|-------------|-----------------------------------------------------------------------------------------------------------------------------------------------------------------------------------|--------------------------|---------|----------------------|------------------------------------------------|--------------|
| DATE | DESCRIPTION | DATE | DESCRIPTION | | ROAD NO. | COUNTY | FINANCIAL PROJECT ID | | |
| | | | | | | BROWARD | | | 9 |

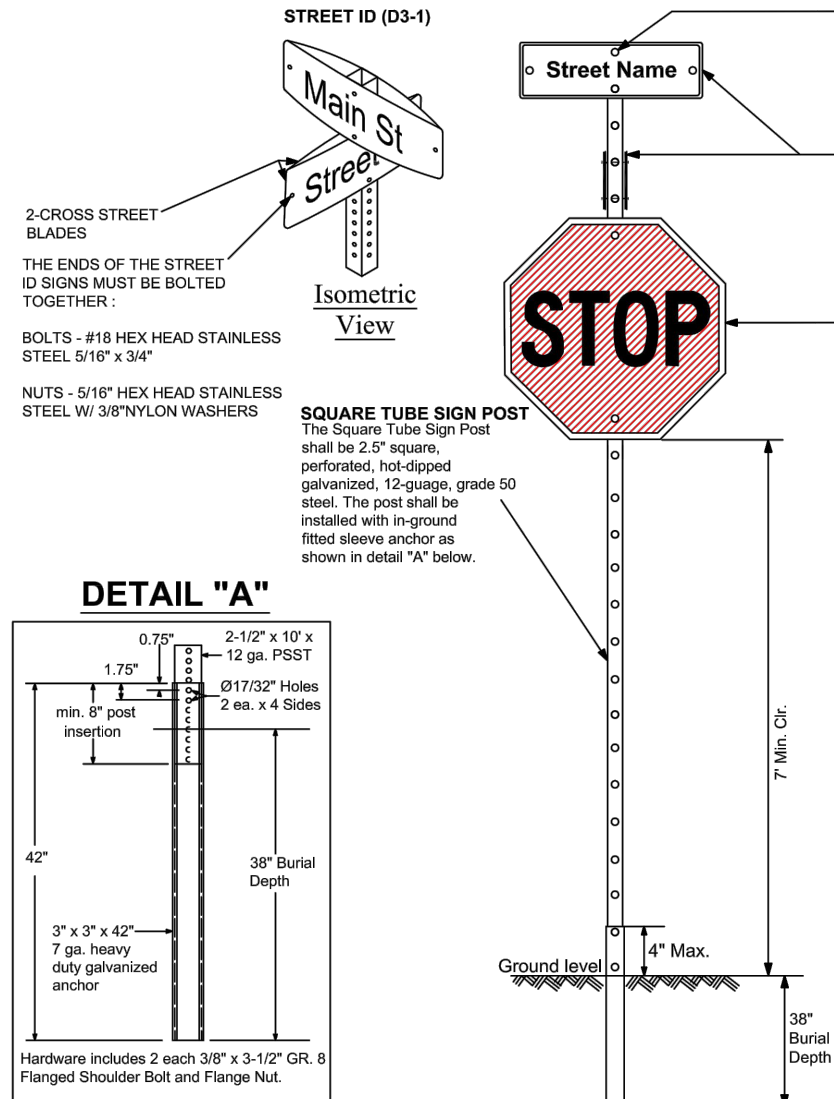
THE OFFICIAL RECORD OF THIS SHEET IS THE ELECTRONIC FILE DIGITALLY SIGNED AND SEALED UNDER RULE 61G15-23.004, F.A.C.

FOR SIGN ASSEMBLIES WITH MAXIMUM 8.75
SQUARE FOOT PANEL AREA

FOR SIGN ASSEMBLIES WITH GREATER THAN 8.75
SQUARE FOOT PANEL AREA WITH SUPPLEMENTAL SIGN

Typical Details

Typical Details

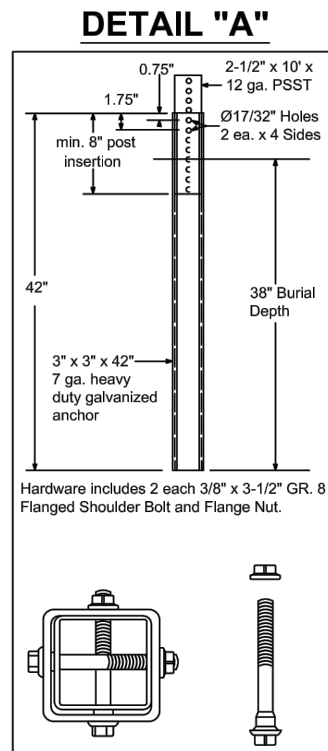
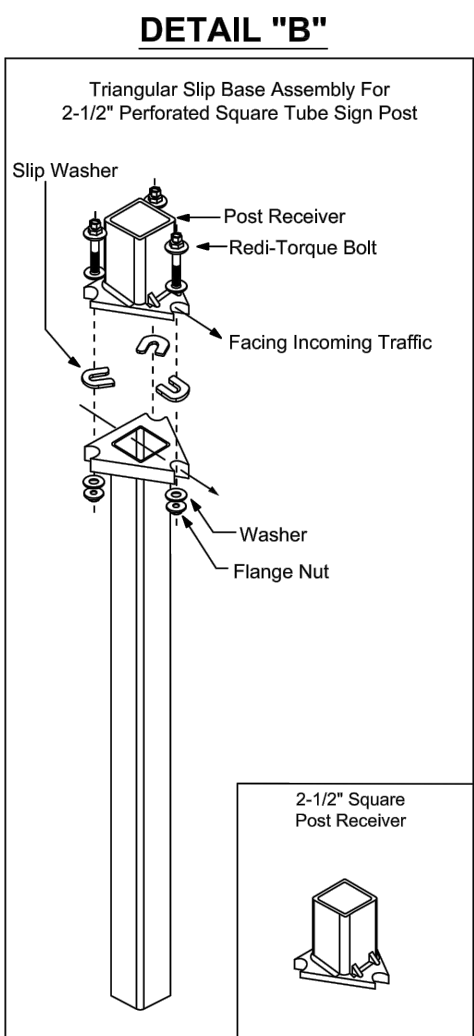
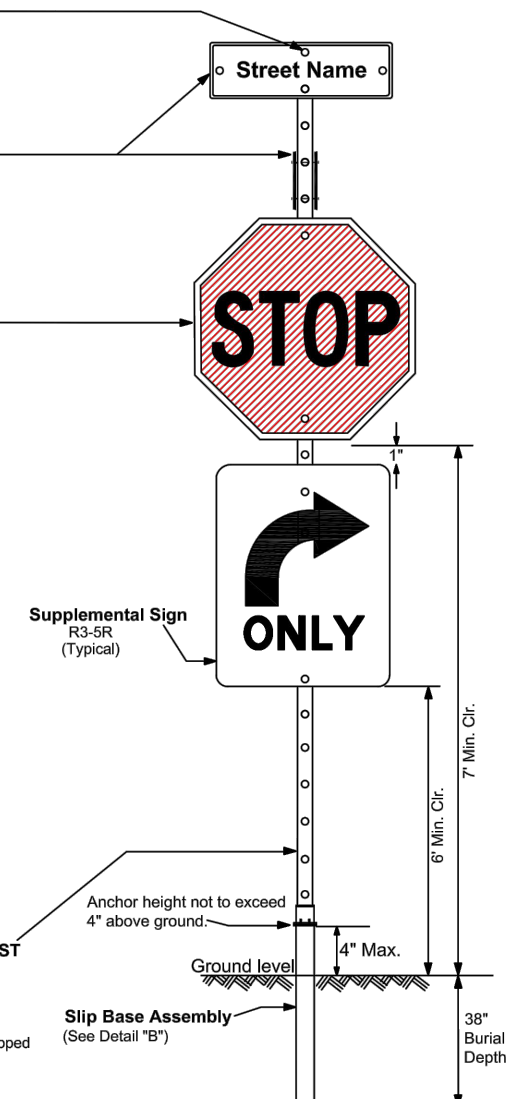


STREET ID (D3-1) MATERIALS:
LETTERS
WHITE TYPE XI SHEETING
LETTERING OF STREET NAME SIGNS SHALL BE COMPOSED OF A COMBINATION OF LOWERCASE LETTERS WITH INITIAL UPPERCASE LETTERS
BORDER
BORDER WIDTHS WILL VARY BASED ON LETTER HEIGHTS
LETTER HEIGHTS - BORDER WIDTHS
4 INCH LETTER = 0.375 INCH BORDER WIDTH
6 INCH LETTER = 0.500 INCH BORDER WIDTH
8 INCH LETTER = 0.750 INCH BORDER WIDTH
GREEN BACKGROUND
GREEN TRANSLUCENT INK SILK-SCREENED CLEAR-COATED OR ELECTRO-CUT (EC) FILM OR EQUIVALENT
LETTER SIZES
SEE MUTCD TABLE 2D-2 (PG 163) FOR MINIMUM LETTER HEIGHTS
LENGTH VARIES BY STREET NAME
HARDWARE
BOLTS - #18 HEX HEAD STAINLESS STEEL 5/16" x 3"
NUTS - 5/16" STAINLESS STEEL W/ NYLON WASHERS.

REGULATORY SIGN
WHEN NO STREET ID IS PRESENT THE STOP SIGN SHALL BE MOUNTED FLUSH TO THE TOP OF THE POST WHILE MAINTAINING 7 FEET MIN. CLEARANCE BETWEEN BOTTOM OF SIGN AND GROUND LEVEL. ANY SIGN INSTALLED BACK TO BACK WITH THE STOP SIGN SHALL BE SMALLER THAN THE STOP SIGN.

STOP, DO NOT ENTER OR YIELD
WHITE TYPE XI SHEETING
PRESSURE-SENSITIVE RED TRANSLUCENT INK SILK-SCREENED CLEAR-COATED OR ELECTRO-CUT (EC) FILM OR EQUIVALENT.
HARDWARE
FRONT: #18 HEX HEAD STAINLESS STEEL 5/16" x 3" BOLT W/ 3/8" NYLON WASHER
BACK: 5/16" HEX HEAD STAINLESS STEEL NUT W/ 3/8" STAINLESS STEEL WASHER.

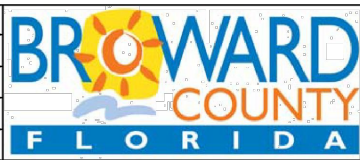
NOTES: 1. ALL TYPE XI SHEETING UTILIZED MUST BE ON THE FDOT APL LIST.
2. SEE BCTED TECHNICAL POLICY MEMO #TPM - 16-001 - SPECIFICATIONS FOR RETROREFLECTIVE TRAFFIC SIGN MATERIALS.



SQUARE TUBE SIGN POST
The Square Tube Sign Post shall consist of a 2.5" square tube inserted into a 2.5" square post receiver. Both tubes will be perforated, hot-dipped galvanized, 12-gauge, grade 50 steel. The post shall be installed into the slip base assembly shown in detail "B".

Notes:
1. Dimensions and certain details for the parts used to assemble the slip base connections are intentionally not shown. Slip base connections are patented manufactured products that are in compliance with NCHRP 350 crash test criteria. The base connection details are only shown on this plan to illustrate how the parts are assembled. The complete assembly must be designed to withstand 150 mph Base Wind Speed per 2013 AASHTO Standard Specifications for Structural Supports for Highway Signs, Luminaires, and Traffic Signals, 6th edition and interims.
2. For standard ground sign installation, see detail entitled " Ground Sign Assembly Details".

| REVISIONS | |
|------------|------------------------|
| DATE | DESCRIPTION |
| 01-25-2018 | N/A |
| 04-09-2019 | UPDATED MATERIAL NOTES |
| 02-28-2020 | ADDED ISOMETRIC VIEW |



| PUBLIC WORKS DEPARTMENT TRAFFIC ENGINEERING DIVISION | |
|---------------------------------------------------------|------------|
| DESIGN BY: CARMELO CARATOZZOLO, P.E. | SCALE: NTS |
| DRAWN BY: STEPHON RAMOUTAR | |
| CHECKED BY: ANDREW SEBO, P.E., PTOE | |

| STOP SIGN AND STREET IDENTIFICATION ASSEMBLY TYPICAL DETAILS | |
|--------------------------------------------------------------------|--------|
| SHEET NO. | 1 OF 1 |

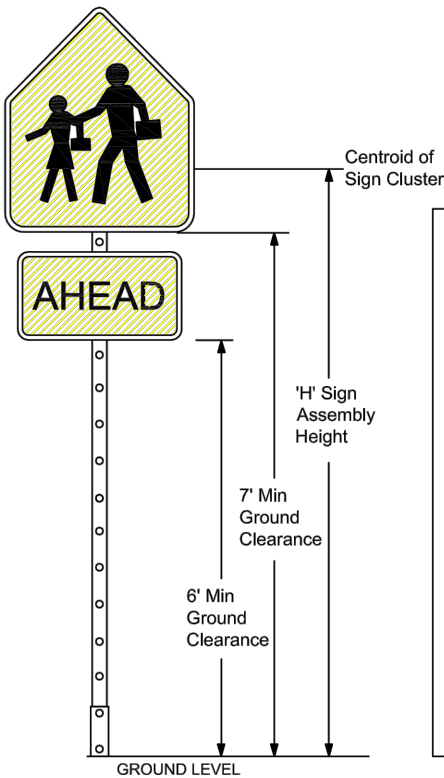
| REVISIONS | | | | FREDDIE A. VARGAS, P.E. P.E. LICENSE NUMBER 35941 CARNAHAN PROCTOR & CROSS, INC. 814 S. MILITARY TRAIL DEERFIELD BEACH, FL 33442 CERTIFICATE OF AUTHORIZATION 2936 | CITY OF NORTH LAUDERDALE | | | <i>STOP SIGN AND STREET INDENTIFICATION</i> | SHEET NO. |
|-----------|-------------|------|-------------|-----------------------------------------------------------------------------------------------------------------------------------------------------------------------------------|--------------------------|--------|----------------------|-------------------------------------------------|--------------|
| DATE | DESCRIPTION | DATE | DESCRIPTION | | | | | | |
| | | | | | ROAD NO. | COUNTY | FINANCIAL PROJECT ID | | 10 |

THE OFFICIAL RECORD OF THIS SHEET IS THE ELECTRONIC FILE DIGITALLY SIGNED AND SEALED UNDER RULE 61G15-23.004, F.A.C.

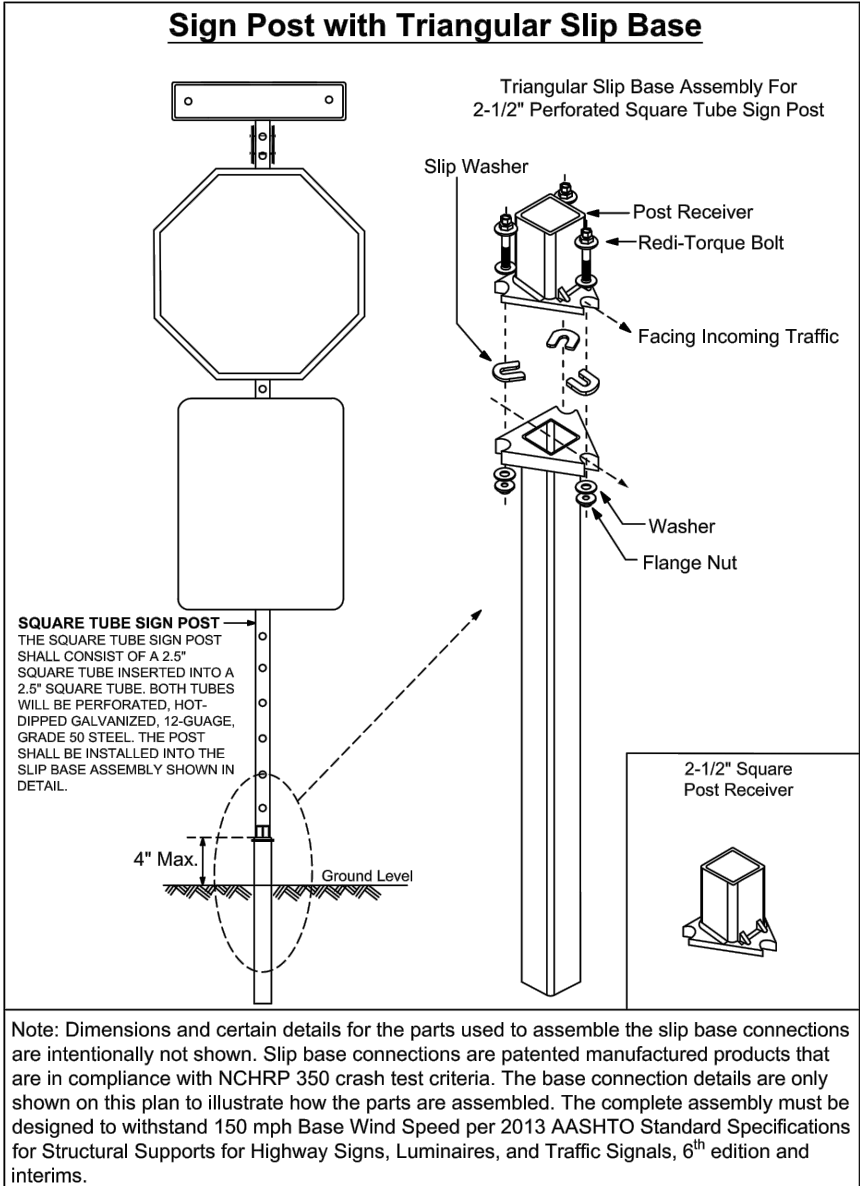
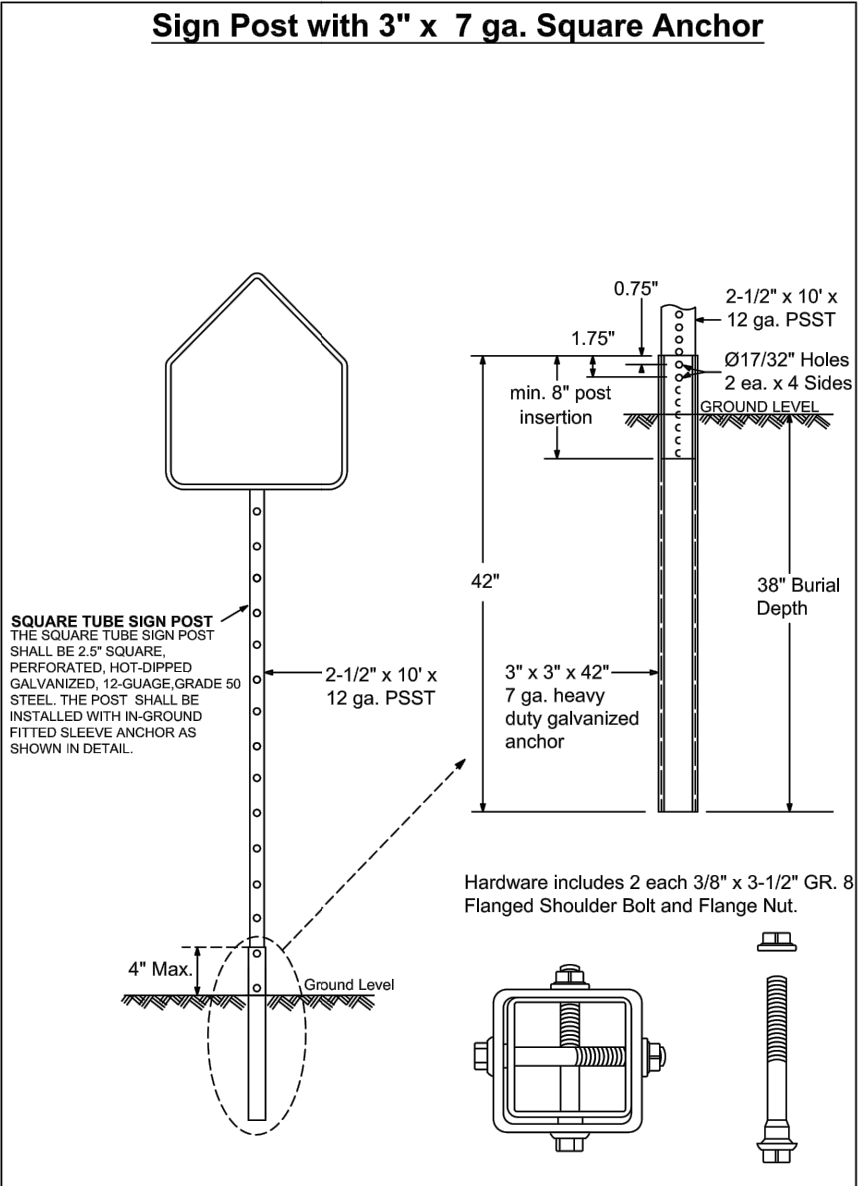
FREDDIE A. VARGAS P.E.
LICENSE NO. 35941

GUIDE TO USE THIS STANDARD:

1. Calculate the Total Panel Area and the centroid 'C' for an individual sign or a sign cluster.
2. Determine the height 'H' from the groundline for the individual sign or the cluster.
3. Consult the Post Size Table and find the intersection point.
4. Design the post and the foundation according to the required Post Size and Assembly Details.

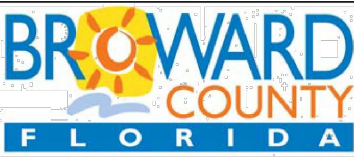


| Post Size Table | |
|-----------------------|-----------------------------------------------------|
| Total Panel Area (sf) | 'H' Sign Assembly Height (ft) (measure from ground) |
| | 8 8.5 9 9.5 10 |
| 3 | |
| 4 | |
| 5 | |
| 6 | |
| 7 | |
| 8 | |
| 9 | |
| 10 | |
| 11 | |
| 12 | |
| 13 | |
| 14 | |
| 15 | |
| 16 | |
| 17 | |
| 18 | |
| 19 | |
| 20+ | |



Note: Dimensions and certain details for the parts used to assemble the slip base connections are intentionally not shown. Slip base connections are patented manufactured products that are in compliance with NCHRP 350 crash test criteria. The base connection details are only shown on this plan to illustrate how the parts are assembled. The complete assembly must be designed to withstand 150 mph Base Wind Speed per 2013 AASHTO Standard Specifications for Structural Supports for Highway Signs, Luminaires, and Traffic Signals, 6th edition and interims.

| REVISIONS | |
|------------|-------------------|
| DATE | DESCRIPTION |
| 01-05-2016 | N/A |
| 03-21-2017 | UPDATED POST SIZE |



| PUBLIC WORKS DEPARTMENT TRAFFIC ENGINEERING DIVISION | |
|---------------------------------------------------------|------------|
| DESIGN BY: YVES D'ANJOU, P.E. | SCALE: NTS |
| DRAWN BY: STEPHON RAMOUTAR | |
| CHECKED BY: ANDREW SEBO, P.E., PTOE | |

GROUND SIGN ASSEMBLY
DETAILS

SHEET
NO.
1 OF 1

| REVISIONS | | | |
|-----------|-------------|------|-------------|
| DATE | DESCRIPTION | DATE | DESCRIPTION |
| | | | |

FREDDIE A. VARGAS, P.E.
P.E. LICENSE NUMBER 35941
CARNAHAN PROCTOR & CROSS, INC.
814 S. MILITARY TRAIL
DEERFIELD BEACH, FL 33442
CERTIFICATE OF AUTHORIZATION 2936

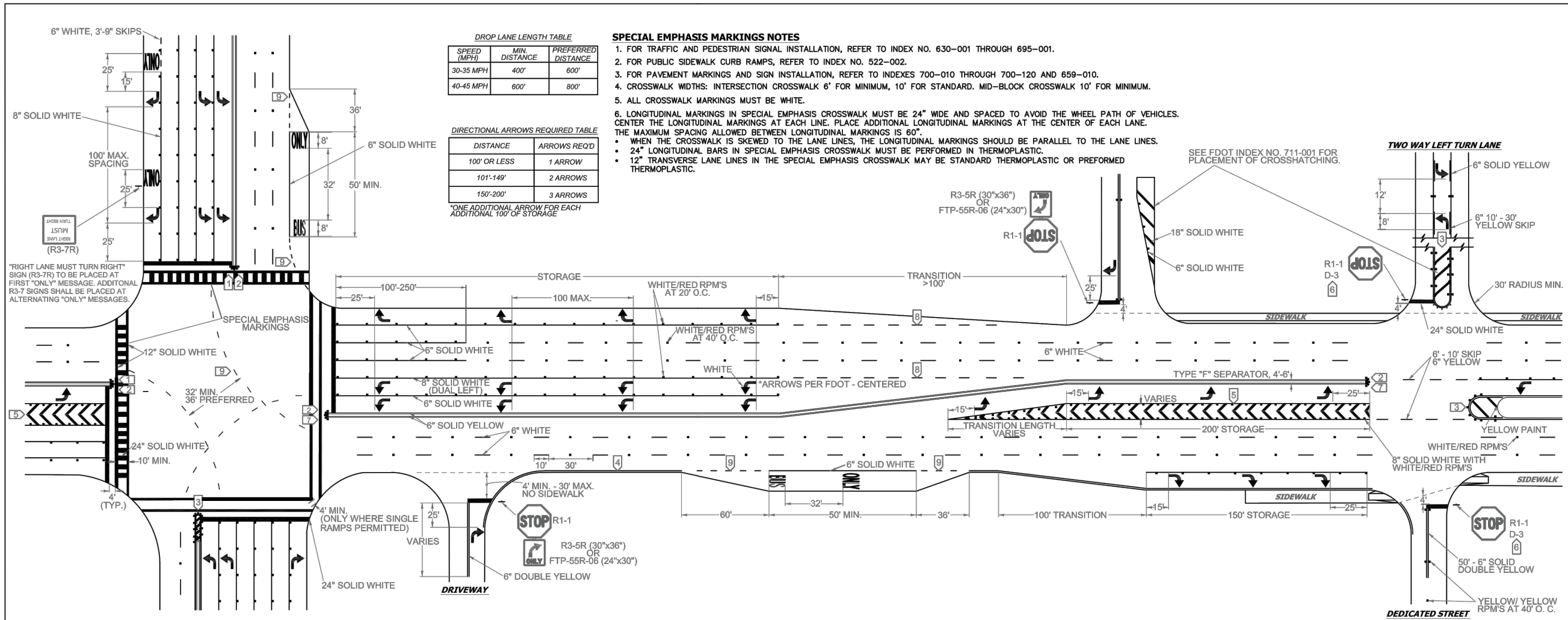
CITY OF NORTH LAUDERDALE

| ROAD NO. | COUNTY | FINANCIAL PROJECT ID |
|----------|---------|----------------------|
| | BROWARD | |

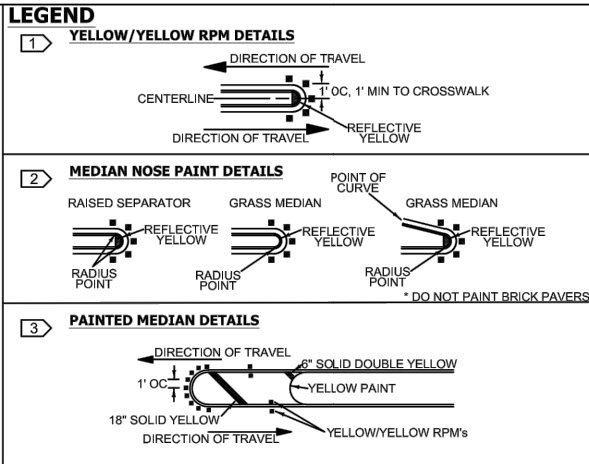
GROUND SIGN ASSEMBLY

SHEET
NO.

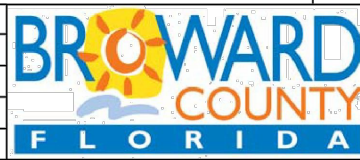
11



- NOTES**
1. ALL PAVEMENT MARKINGS SHALL BE ALKYD BASED THERMOPLASTIC AND FULLY RETROREFLECTORIZED.
 2. ALL PAVEMENT MARKINGS ON PAVER SYSTEMS SHALL BE 3M 380/381 SERIES TAPE OR EQUIVALENT AND APPLIED WITH P60 ADHESIVE AS PER MANUFACTURERS SPECIFICATIONS.
 3. ALL PAVEMENT MARKINGS AND SIGNING SHALL BE IN ACCORDANCE WITH THE "MANUAL ON UNIFORM TRAFFIC CONTROL DEVICES", BCTED STANDARDS, AND FDOT DESIGN STANDARDS.
 4. SEE FDOT INDEX NO 706-001 FOR PLACEMENT OF RPM'S (FOR BULLNOSE RPM TREATMENT, SEE LEGEND NO. 1)
 5. RPM'S SHALL BE CLASS "B" OR EQUIVALENT, APPLIED WITH EPOXY OR BITUMINOUS ADHESIVE.
 6. FDOT APPROVED SEALER SHALL BE USED WHEN APPLYING MARKINGS ON CONCRETE.
 7. FOR BIKE LANE DETAILS SEE FDOT INDEX NO. 711-002.
 8. MARKINGS IN AND ADJACENT TO BIKE LANES SHALL BE THERMOPLASTIC WITH A MIXTURE OF 50% GLASS SPHERES AND 50% SHARP SILICA SAND APPLIED AT A RATE DETERMINED BY THE MANUFACTURER'S SPECIFICATIONS.
 9. EXISTING MARKINGS SHALL BE REMOVED BY WATER BLASTING OR SAND BLASTING.
 10. ALL STOP LINES TO BE 4' BEHIND CROSSWALK OR SIDEWALK.
 11. PAVEMENT MARKING REFLECTIVITY SHALL BE UNIFORM ACROSS THE ENTIRE STRIPE AND SHALL HAVE A MINIMUM REFLECTIVITY READING OF 250 MILLICANDELAS FOR WHITE AND 175 MILLICANDELAS FOR YELLOW.
 12. ALL PRODUCTS MUST BE ON FDOT'S APPROVED PRODUCTS LIST (APL).
 13. RPMS SHALL NOT BE INSTALLED ADJACENT TO BIKE LANES.



| REVISIONS | |
|------------|------------------------------|
| DATE | DESCRIPTION |
| 01-15-2016 | N/A |
| 06-11-2018 | UPDATED FDOT INDEX REFERENCE |
| 08-23-2018 | UPDATED NOTES |



| PUBLIC WORKS DEPARTMENT TRAFFIC ENGINEERING DIVISION | |
|---------------------------------------------------------|------------|
| DESIGN BY: CARMELO CARATOZZOLO, P.E. | SCALE: NTS |
| DRAWN BY: STEPHON RAMOUTAR | |
| CHECKED BY: ANDREW SEBO, P.E., PTOE | |

| PAVEMENT MARKINGS AND SIGNS DETAILS | |
|-------------------------------------------|--|
| SHEET NO. 1 OF 1 | |

| REVISIONS | | | |
|-----------|-------------|------|-------------|
| DATE | DESCRIPTION | DATE | DESCRIPTION |
| | | | |
| | | | |

FREDDIE A. VARGAS, P.E.
P.E. LICENSE NUMBER 35941
CARNAHAN PROCTOR & CROSS, INC.
814 S. MILITARY TRAIL
DEERFIELD BEACH, FL 33442
CERTIFICATE OF AUTHORIZATION 2936

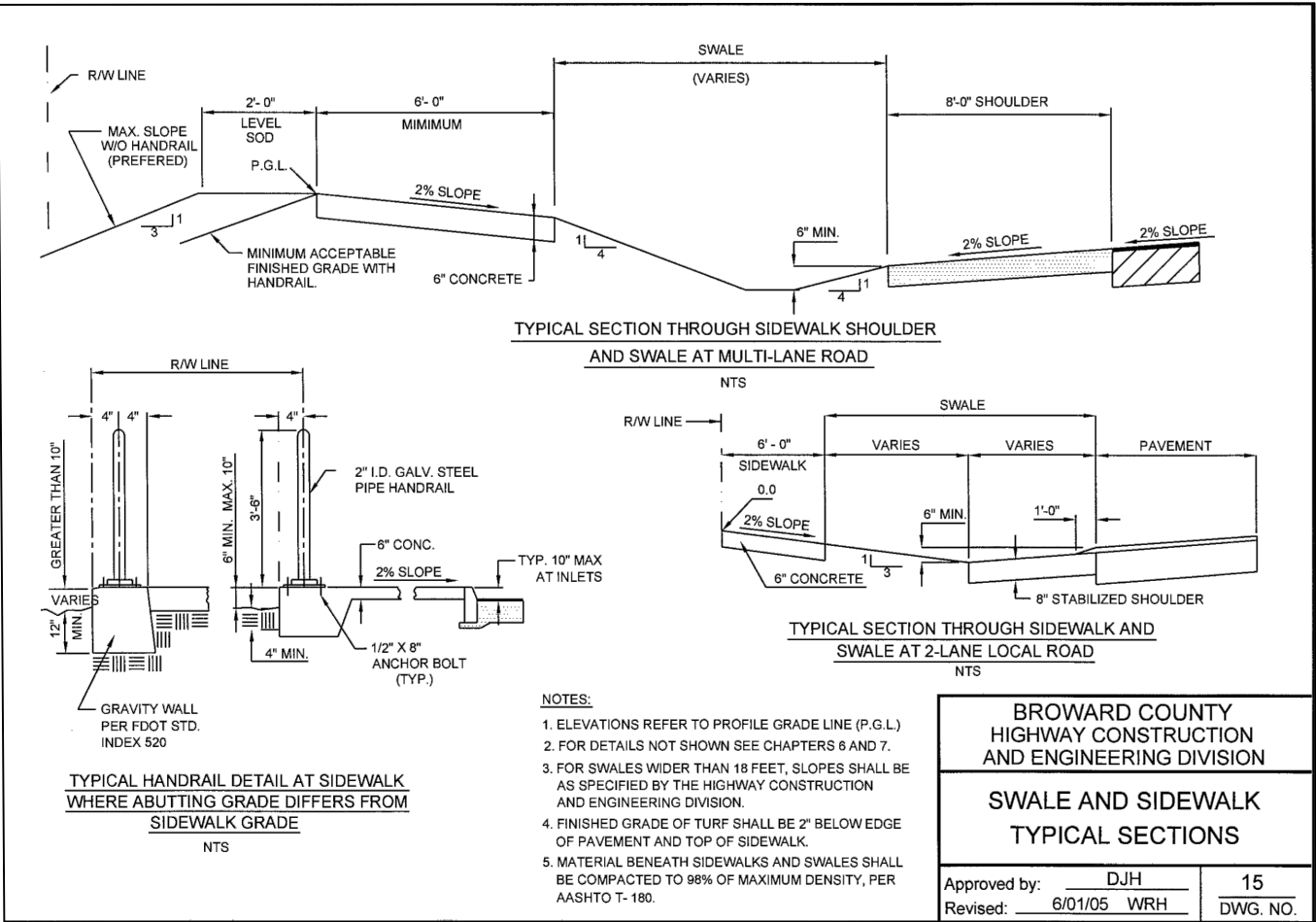
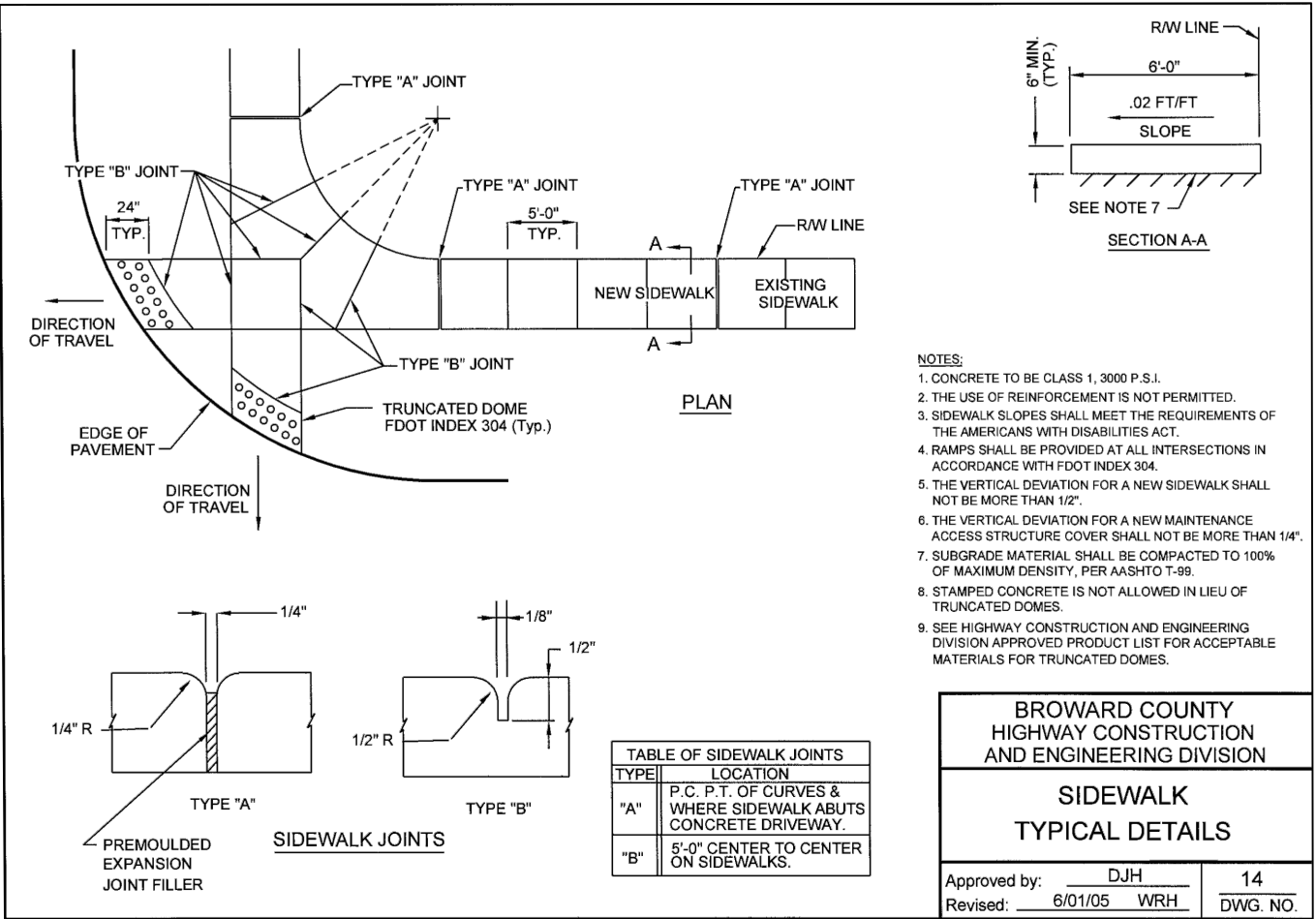
| CITY OF NORTH LAUDERDALE | | |
|--------------------------|---------|----------------------|
| ROAD NO. | COUNTY | FINANCIAL PROJECT ID |
| | BROWARD | |

PAVEMENT MARKINGS

| SHEET NO. |
|--------------|
| 12 |

THE OFFICIAL RECORD OF THIS SHEET IS THE ELECTRONIC FILE DIGITALLY SIGNED AND SEALED UNDER RULE 61G15-23.004, F.A.C.

FREDDIE A. VARGAS P.E.
LICENSE NO. 35941



| REVISIONS | | | | FREDDIE A. VARGAS, P.E. P.E. LICENSE NUMBER 35941 CARNAHAN PROCTOR & CROSS, INC. 814 S. MILITARY TRAIL DEERFIELD BEACH, FL 33442 CERTIFICATE OF AUTHORIZATION 2936 | CITY OF NORTH LAUDERDALE | | | SIDEWALK TYPICAL DETAILS | SHEET NO. 13 |
|-----------|-------------|------|-------------|-----------------------------------------------------------------------------------------------------------------------------------------------------------------------------------|--------------------------|---------|----------------------|--------------------------|------------------------|
| DATE | DESCRIPTION | DATE | DESCRIPTION | | ROAD NO. | COUNTY | FINANCIAL PROJECT ID | | |
| | | | | | | BROWARD | | | |