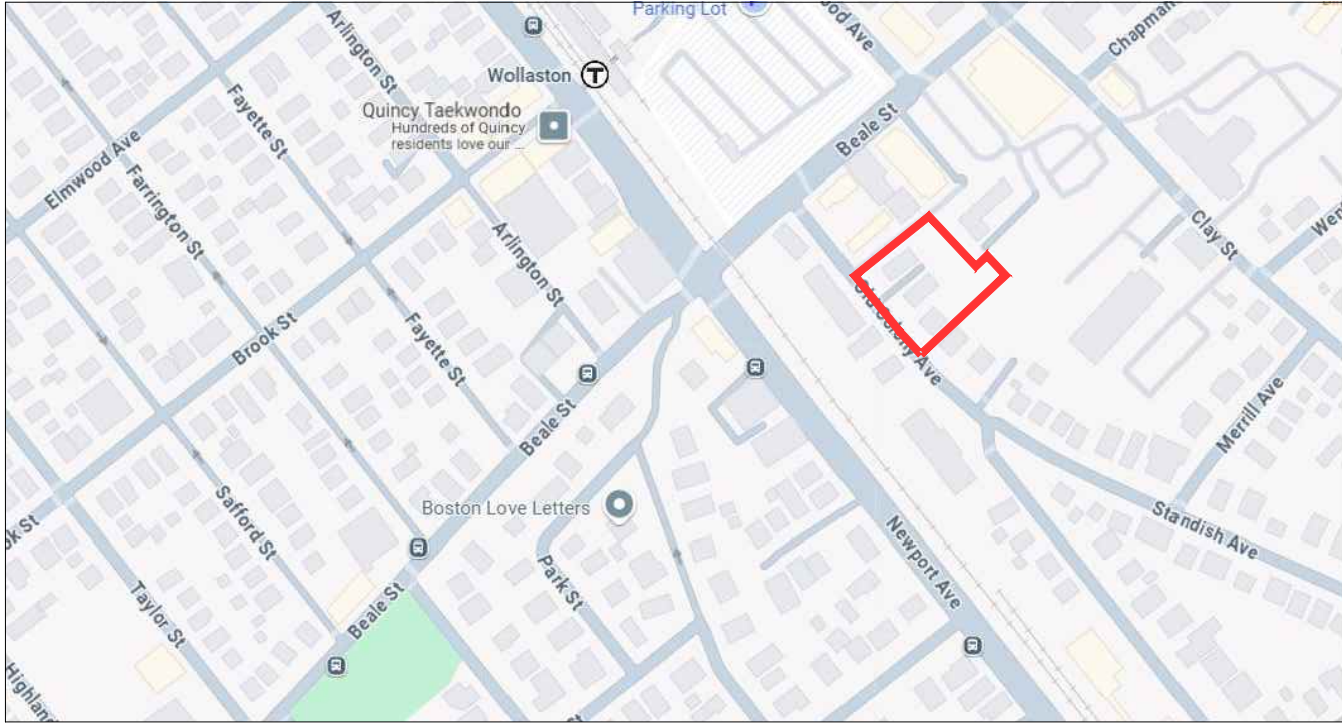
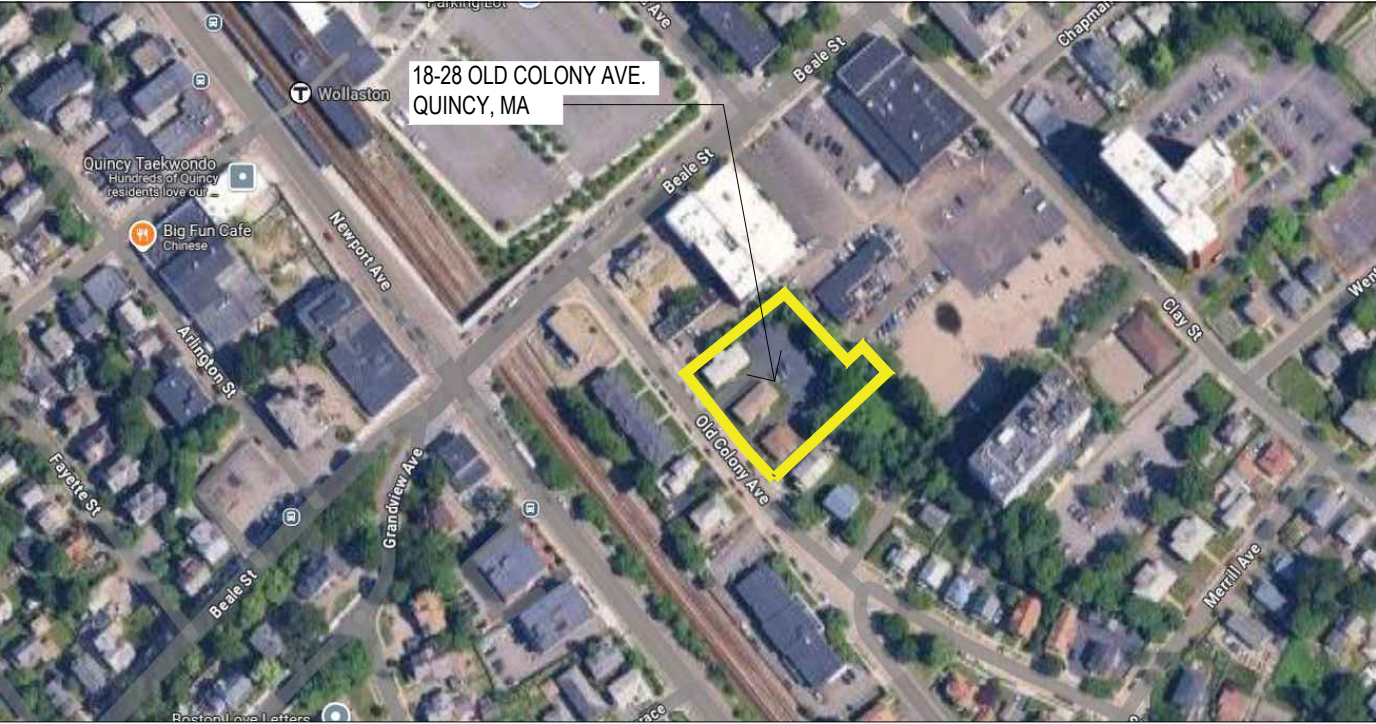



NEW CONSTRUCTION		18-28 OLD COLONY		OLD COLONY AVE, QUINCY, MA	
DRAWING LIST		PROJECT DATA	LOCUS PLAN	LOCUS PLAN	
<div><div>SHEET NUMBER</div><div>C-000</div><div>EX-100</div><div>EX-200</div><div>SP-100</div><div>A-100</div><div>A-200</div><div>A-300</div><div>A-400</div><div>A-500</div><div>A-501</div></div> <div><div>SHEET NAME</div><div>COVER SHEET</div><div>SITE PHOTOS</div><div>CONTEXT PHOTOS</div><div>ARCHITECTURAL SITE PLAN</div><div>FLOOR PLANS</div><div>ELEVATIONS</div><div>SECTIONS</div><div>SOLAR STUDY</div><div>RENDERED VIEWS</div><div>RENDERED VIEWS & MATERIAL DETAILS</div></div>		<div><div>PROJECT SCOPE:</div><div>MULTI-FAMILY HOUSING WITH 94 UNITS AND 97 PARKING SPACES.</div></div>			
		PROJECT INFORMATION			
		<div><div><div>OWNER / DEVELOPER:</div><div>WOLLASTON ASSETS, LLC</div></div><div><div>ARCHITECT</div><div>DONAHUE ARCHITECTS 21 MCGRATH HIGHWAY, SUITE 401 QUINCY, MA 02169 CONTACT: BRIAN DONAHUE PHONE: 617.479.4122 www.donahuearchitects.com/</div></div><div><div>ATTORNEY:</div><div>EDWARD FLEMING FLEMING + FLEMING, PC 85 CLAY STREET QUINCY, MA</div></div><div><div>CIVIL ENGINEER</div><div>CIVIL & ENVIRONMENTAL CONSULTANT, INC. KARLIS SKULTE, P.E. 31 BELLOWS ROAD, RAYNHAM, MA 02767 PHONE: 7745012176</div></div></div>			
					
		View From Across Street			

REVISIONS

Rev. 05/02/2025 - Planning Board Re-Submission

18-28 OLD COLONY

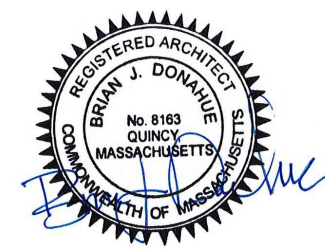
COVER SHEET

Checked by: BD

Drawn by: KLC

Date: 02.14.2025

Scale: AS NOTED



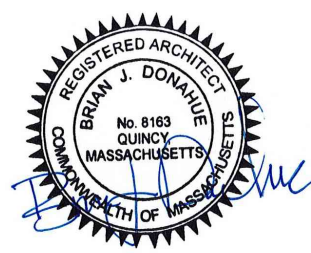
Drawing No.

C - 000

Donahue Architects inc.

21 MCGRATH HIGHWAY, QUINCY, MASS. 02169
Phone: 617-479-4122



REVISIONS	
Rev. 05/02/2025 - Planning Board Re-Submission	
DONAHUE Architects inc.	
21 MCCABETH HIGHWAY, QUINCY, MASS. 02169	
Phone: 1-617-779-4122	
18-28 OLD COLONY	SITE PHOTOS
Checked by: BD	
Drawn by: KLC	
Date: 02.14.2025	
Scale: AS NOTED	
	
Drawing No.	
EX - 100	



REVISIONS	
Rev. 05/02/2025 - Planning Board Re-Submission	
DONAHUE Architects inc.	
21 MCCABETH HIGHWAY, QUINCY, MASS. 02169	
Phone: 617-779-4122	
18-28 OLD COLONY	CONTEXT PHOTOS
Checked by: BD	
Drawn by: KLC	
Date: 02.14.2025	
Scale: AS NOTED	
Drawing No.	
E X - 200	

	Nos.		Floor Area
First Floor Parking:	50 Nos.		19310 sq.ft.
Basement Parking:	48 Nos.		19310 sq.ft.
Total Parking:	98 Nos.		
Second Floor:	14 Units	14 2-bed	16918 sq.ft.
Third Floor:	16 Units	14 2-bed 2 1-bed	16845 sq.ft.
Fourth Floor:	16 Units	14 2-bed 2 1-bed	16845 sq.ft.
Fifth Floor:	16 Units	14 2-bed 2 1-bed	16845 sq.ft.
Total Units:	62 Units	56 2-bed 6 1-bed	67453 sq.ft.



1 SITE PLAN
SCALE: 3/32" = 1'-0"

OLD COLONY (PUBLIC - WIDTH VARIES) AVENUE

REVISIONS

Rev. 05/02/2025 - Planning Board Re-Submission

DONAHUE Architects inc.

21 MCCRATH HIGHWAY, QUINCY, MASS. 02169
Phone: 1-617-479-4122

18-28 OLD COLONY

SITE PLAN

Checked by: BD

Drawn by: KLC

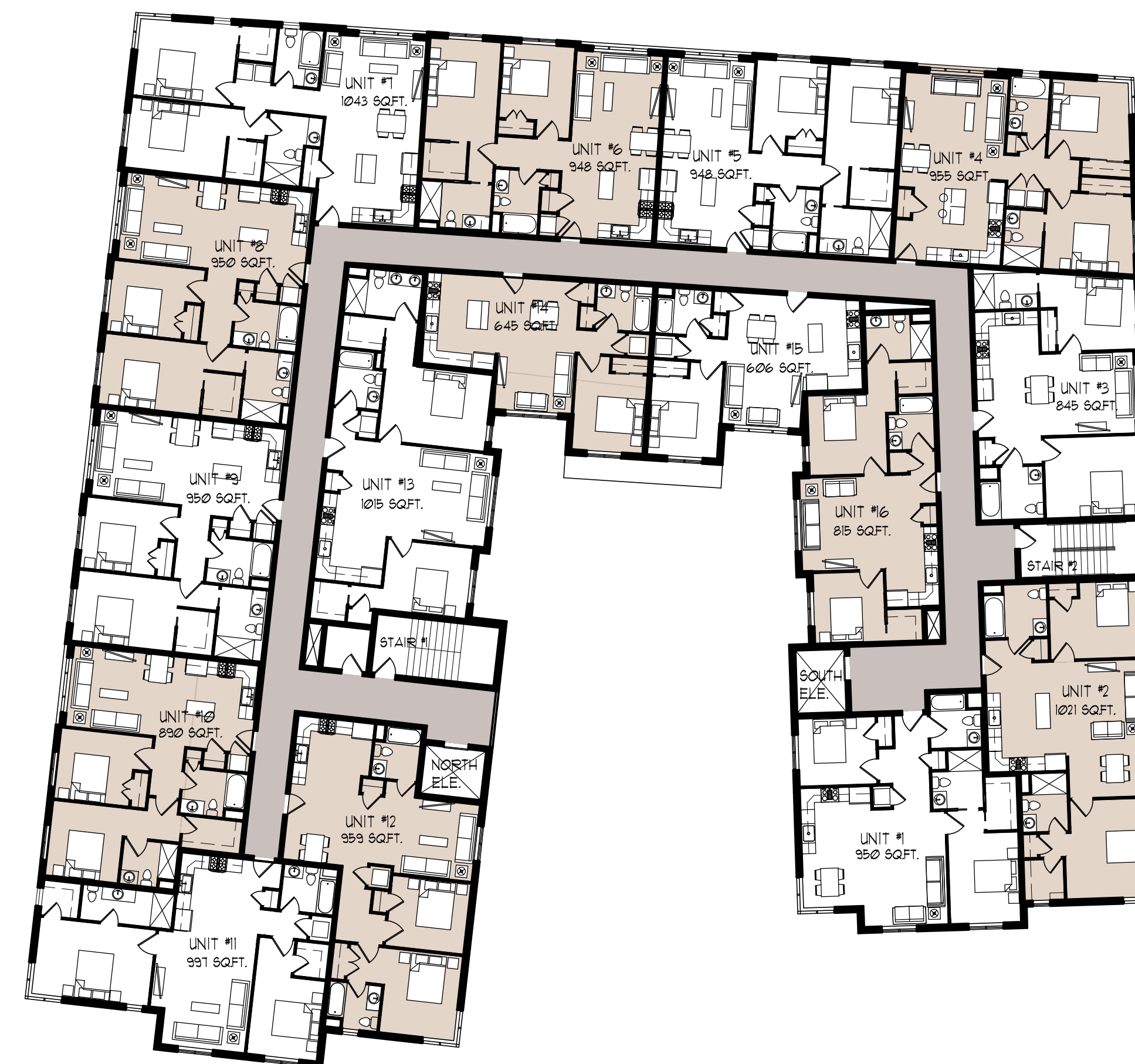
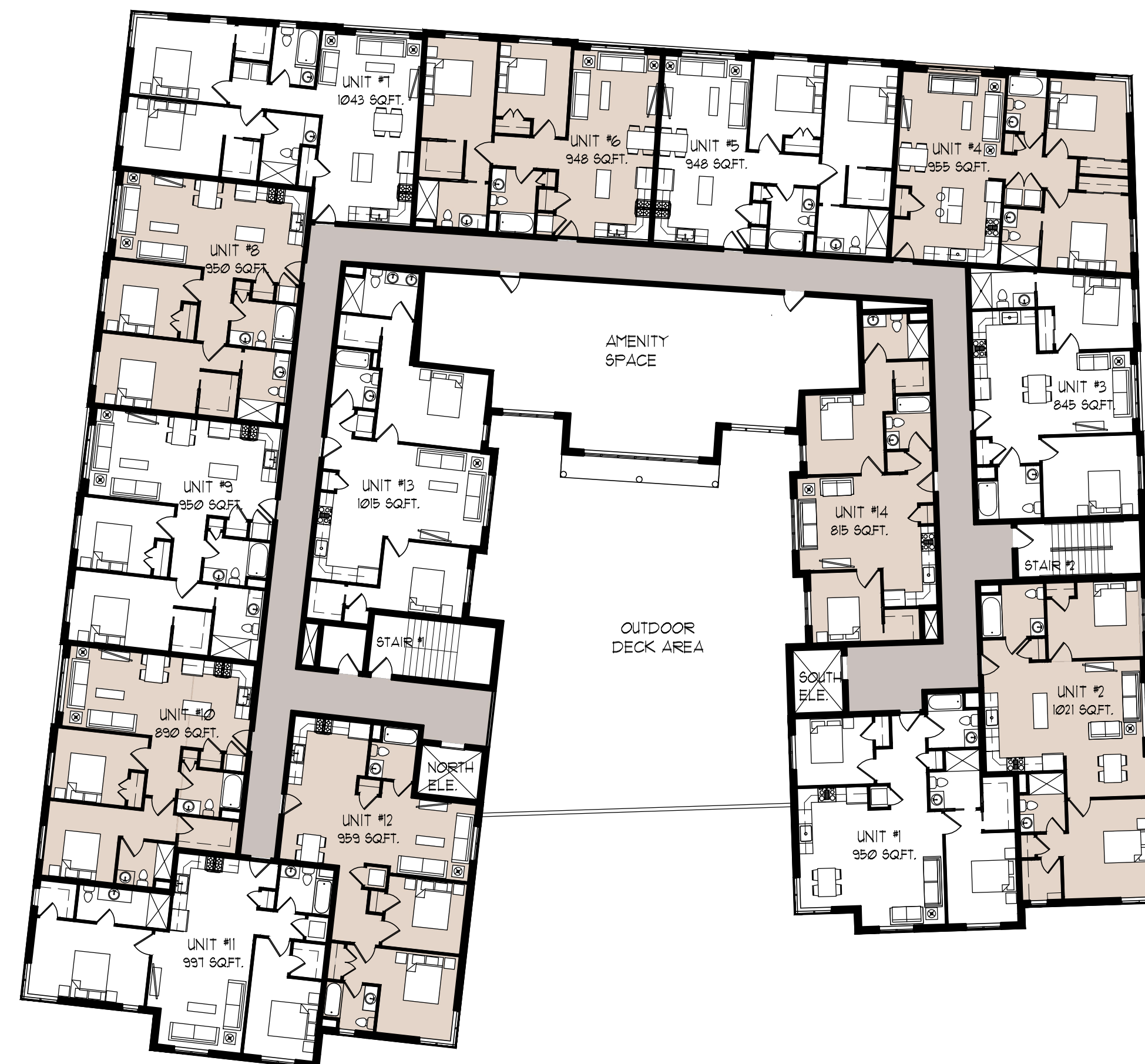
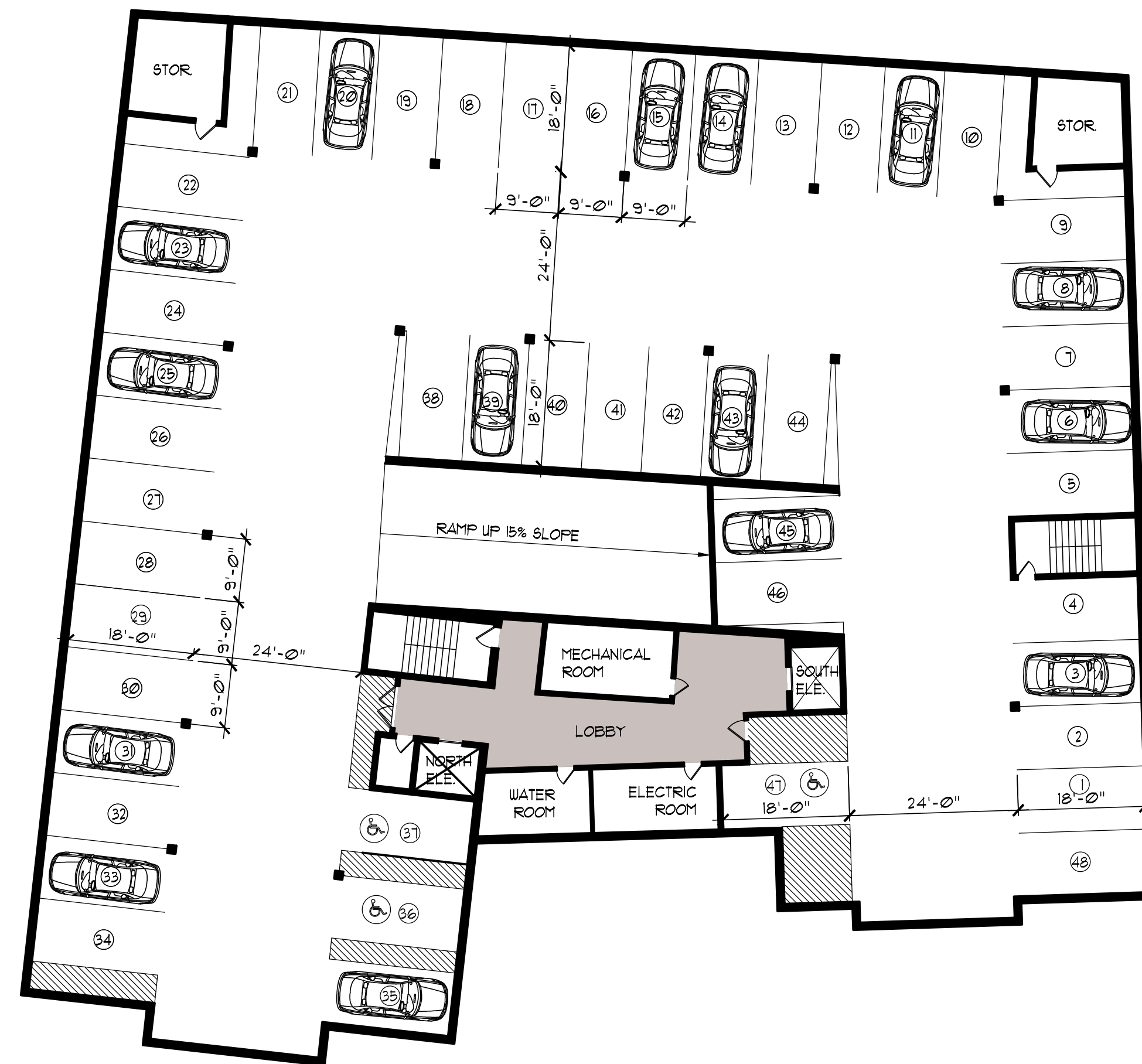
Date: 02.14.2025

Scale: AS NOTED

Professional Engineer Seal for Donahue Architects Inc., No. 8182, Quincy, Massachusetts.

Drawing No.

SP - 100



REVISIONS

Rev. 05/02/2025 - Planning Board Re-Submission

DONAHUE Architects inc.

21 MCGRATH HIGHWAY, QUINCY, MASS. 02169
Phone: 1-617-479-4122

21 MCGRATH HIGHWAY
Phone: 1-617-479-4122

18-28 OLD COLONY

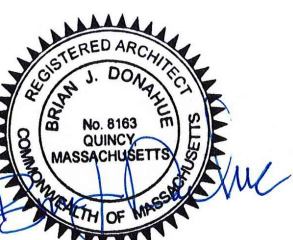
PROPOSED FLOOR PLANS

checked by: BD

Drawn by: KLC

ate: 02.14.2025

Scale: AS NOTED



_____ wing No.

A - 100



1 REAR ELEVATION
SCALE: 3/32" = 1'-0"



2 LEFT ELEVATION
SCALE: 3/32" = 1'-0"

ROOF LEVEL
EL. = 72'-9"
FIFTH FLOOR
EL. = 62'-10"
FOURTH FLOOR
EL. = 52'-11"
THIRD FLOOR
EL. = 43'-0"
SECOND FLOOR
EL. = 33'-1"
UPPER PARKING
EL. = 22'-0"
LOWER PARKING
EL. = 12'-1"



3 FRONT ELEVATION
SCALE: 3/32" = 1'-0"



4 RIGHT ELEVATION
SCALE: 3/32" = 1'-0"

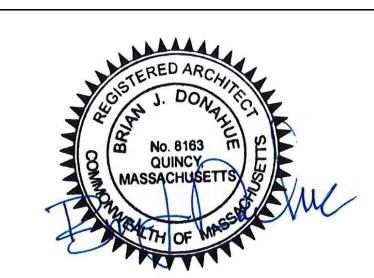
ROOF LEVEL
EL. = 72'-9"
FIFTH FLOOR
EL. = 62'-10"
FOURTH FLOOR
EL. = 52'-11"
THIRD FLOOR
EL. = 43'-0"
SECOND FLOOR
EL. = 33'-1"
UPPER PARKING
EL. = 22'-0"
LOWER PARKING
EL. = 12'-1"

REVISIONS	
Rev. 05/02/2025 - Planning Board Re-Submission	

DONAHUE Architects inc.
21 MCGRATH HIGHWAY, QUINCY, MASS. 02169
Phone: 1-617-479-4122

18-28 OLD COLONY
BUILDING ELEVATIONS

Checked by: BD
Drawn by: WSS
Date: 02.14.2025
Scale: AS NOTED



Drawing No.
A - 200



1 SECTION - 1
SCALE: 3/32" = 1'-0"



2 SECTION - 2
SCALE: 3/32" = 1'-0"

REVISIONS

Rev. 05/02/2025 - Planning Board Re-Submission

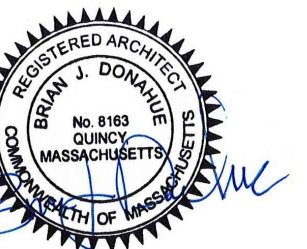
DONAHUE Architects inc.

21 MCGRATH HIGHWAY, QUINCY, MASS. 02169
Phone: 1-617-479-4122

18-28 OLD COLONY

BUILDING SECTIONS

Checked by: BD
Drawn by: WSS
Date: 02.14.2025
Scale: AS NOTED

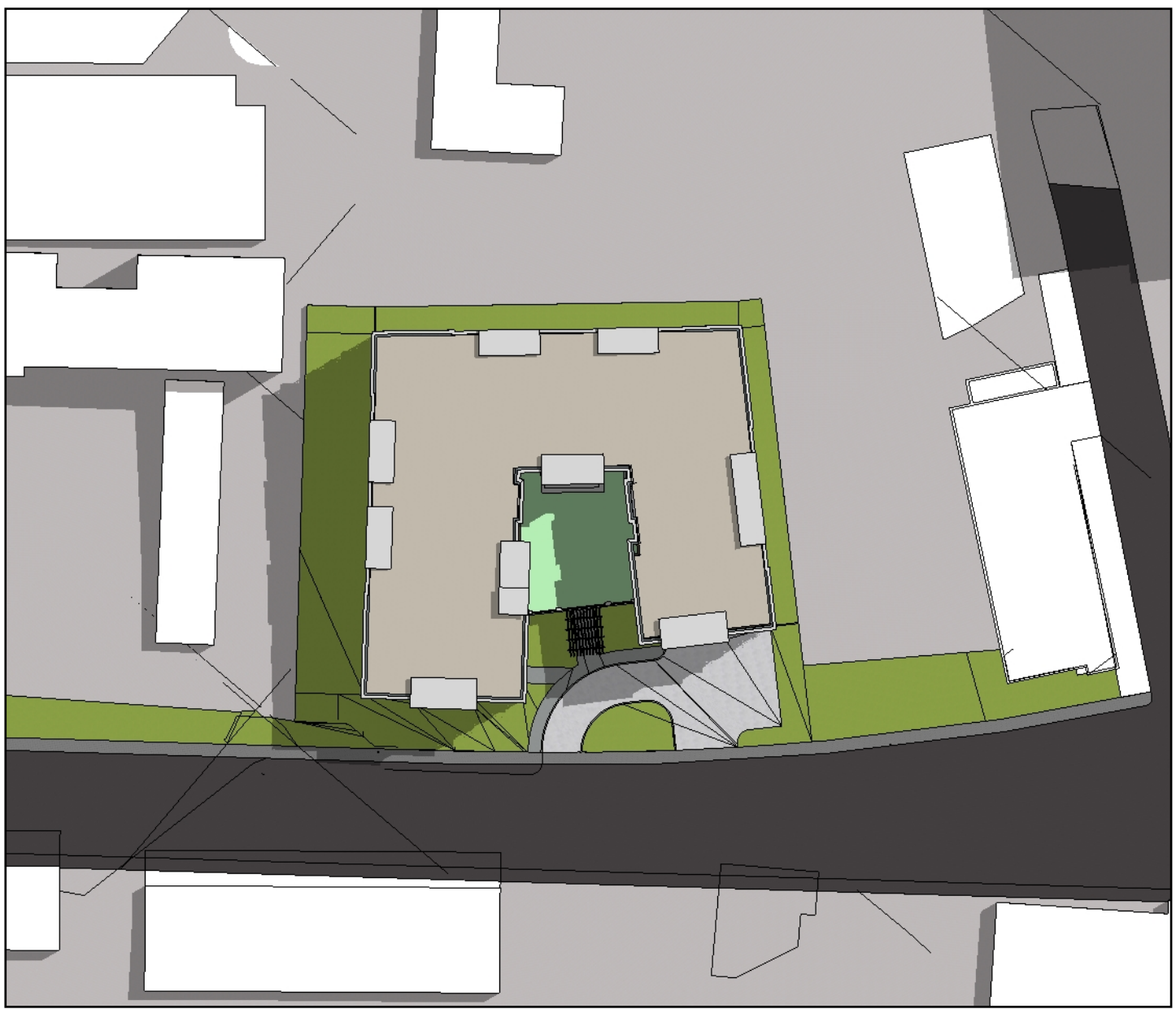


Drawing No.

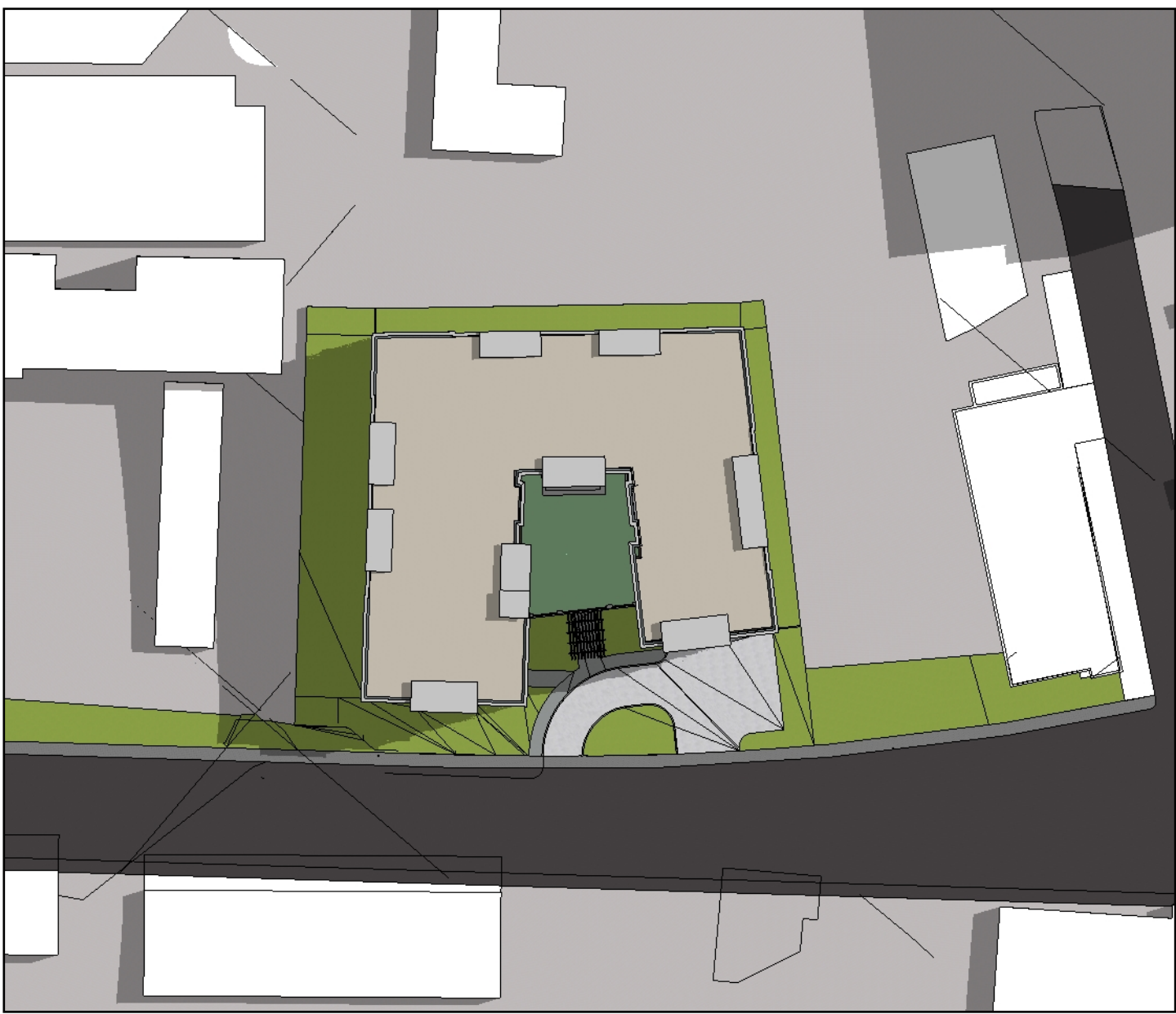
A - 300



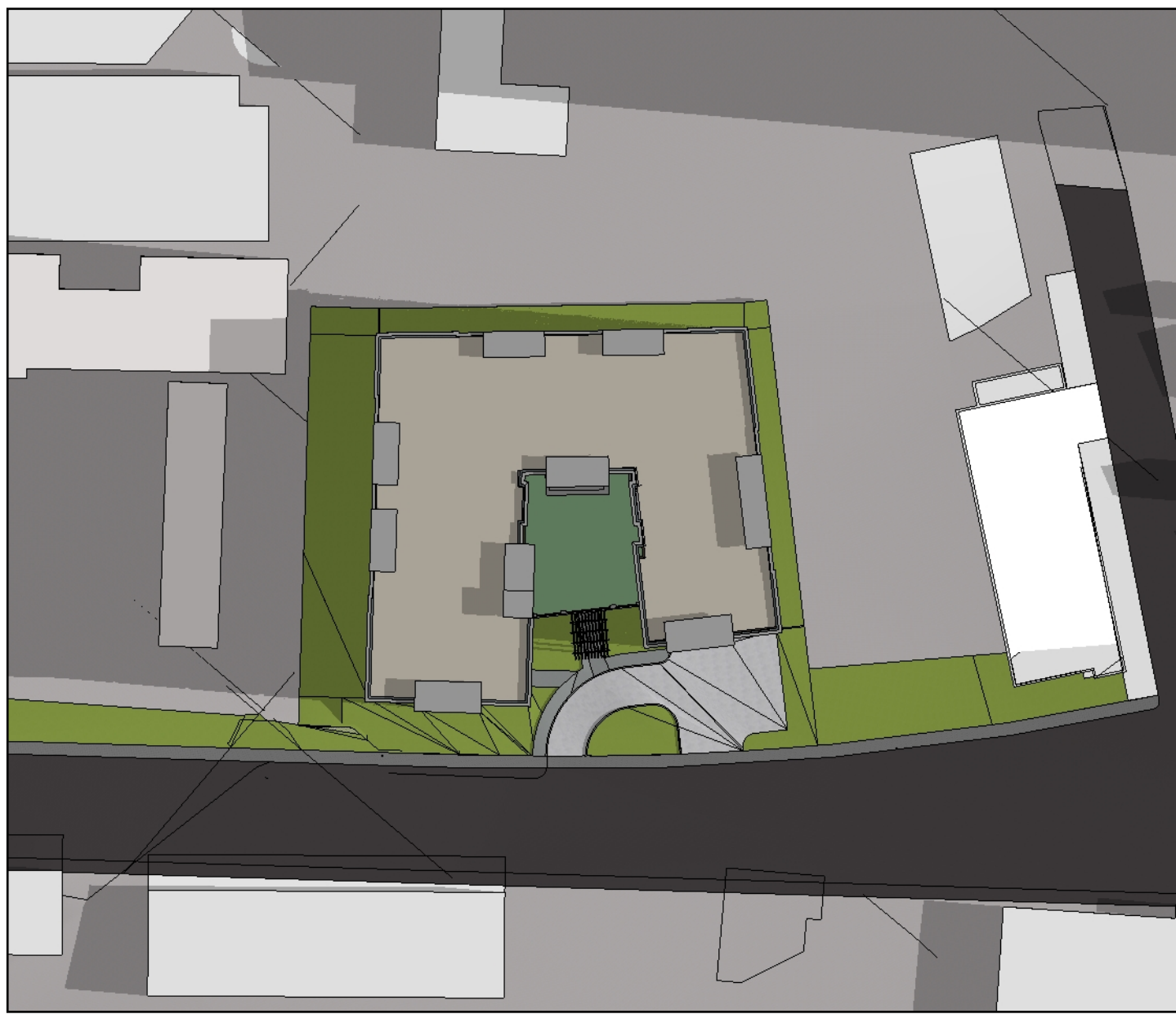
MARCH - 9:00



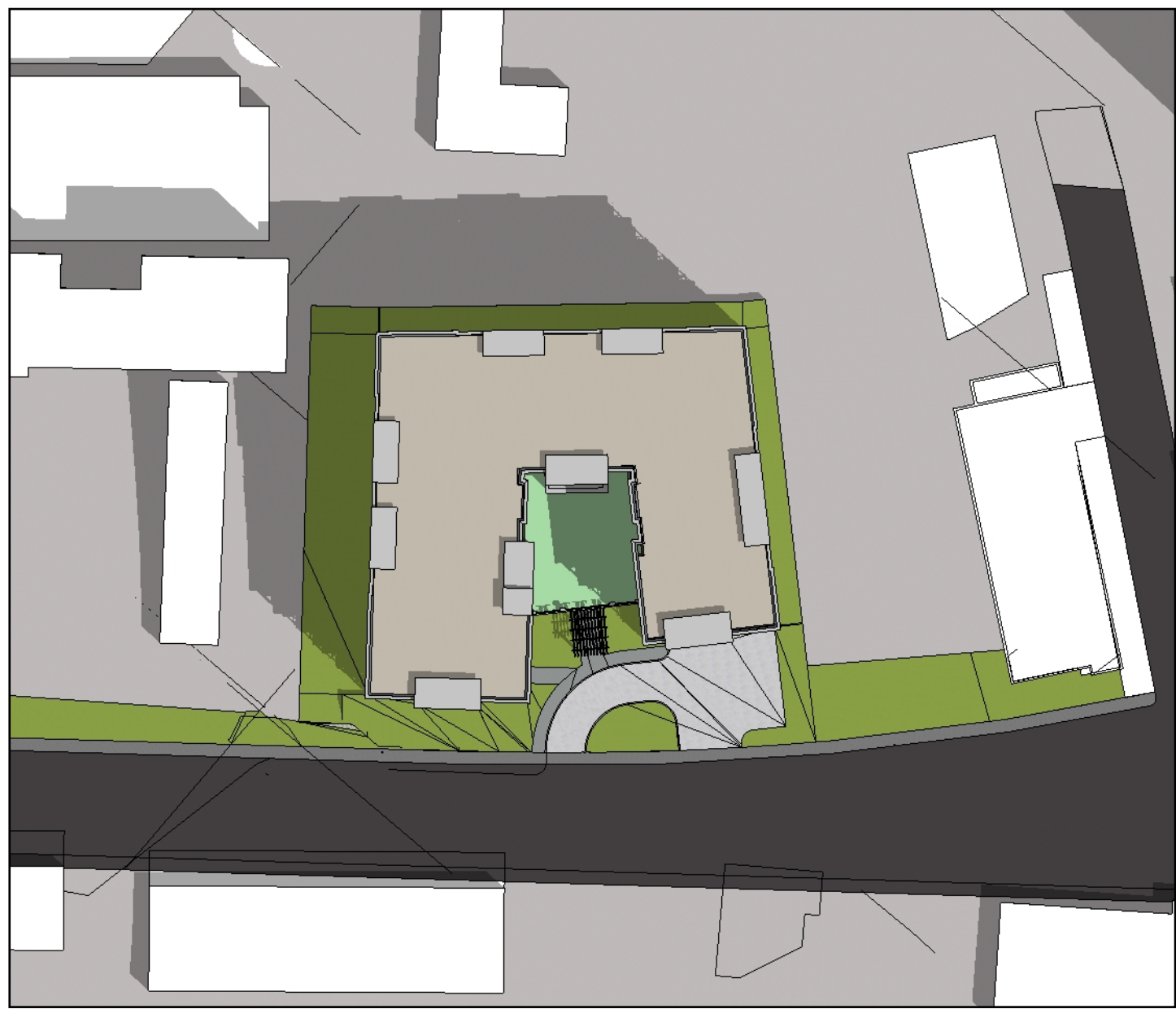
JUNE - 9:00



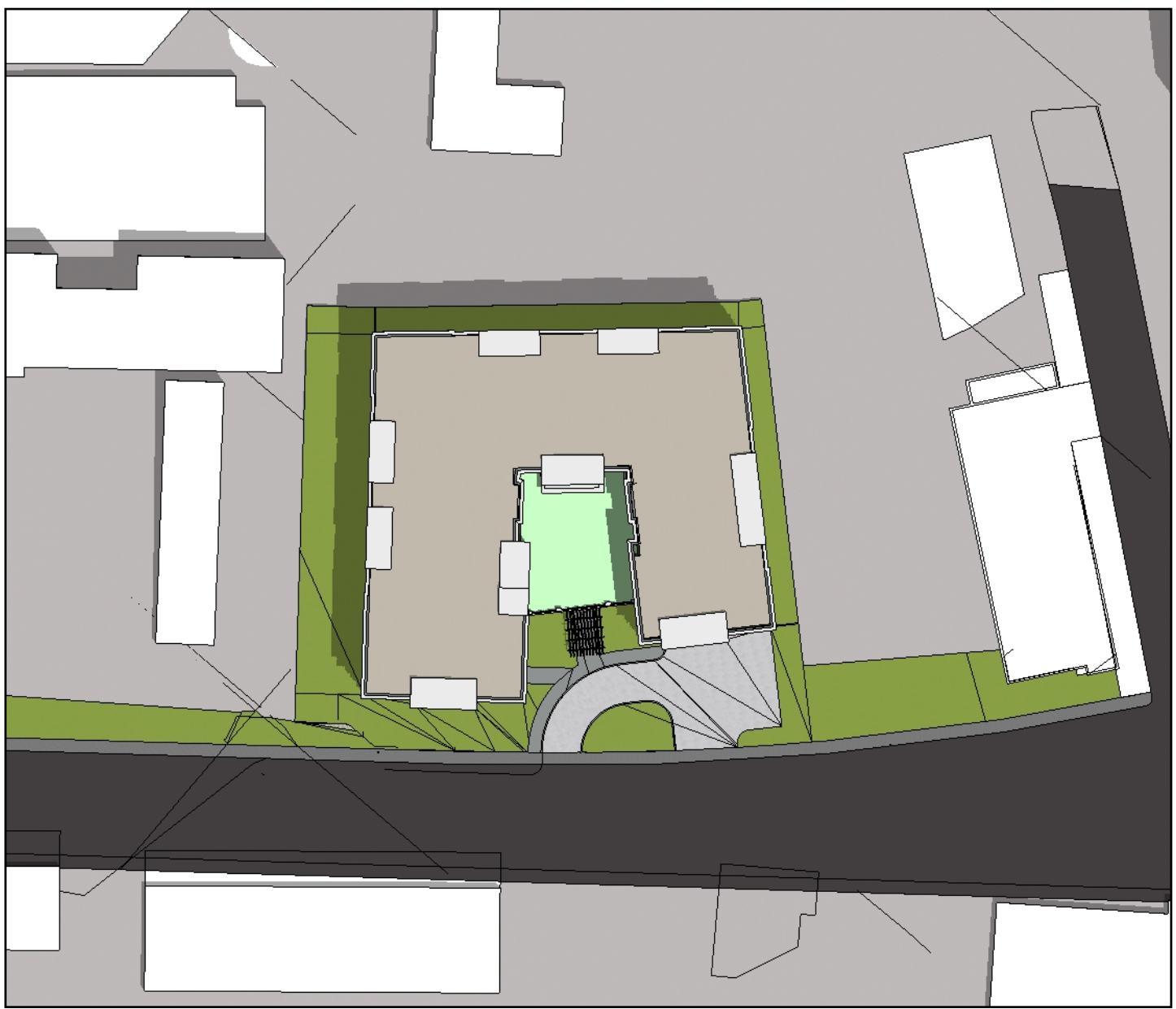
SEPTEMBER - 9:00



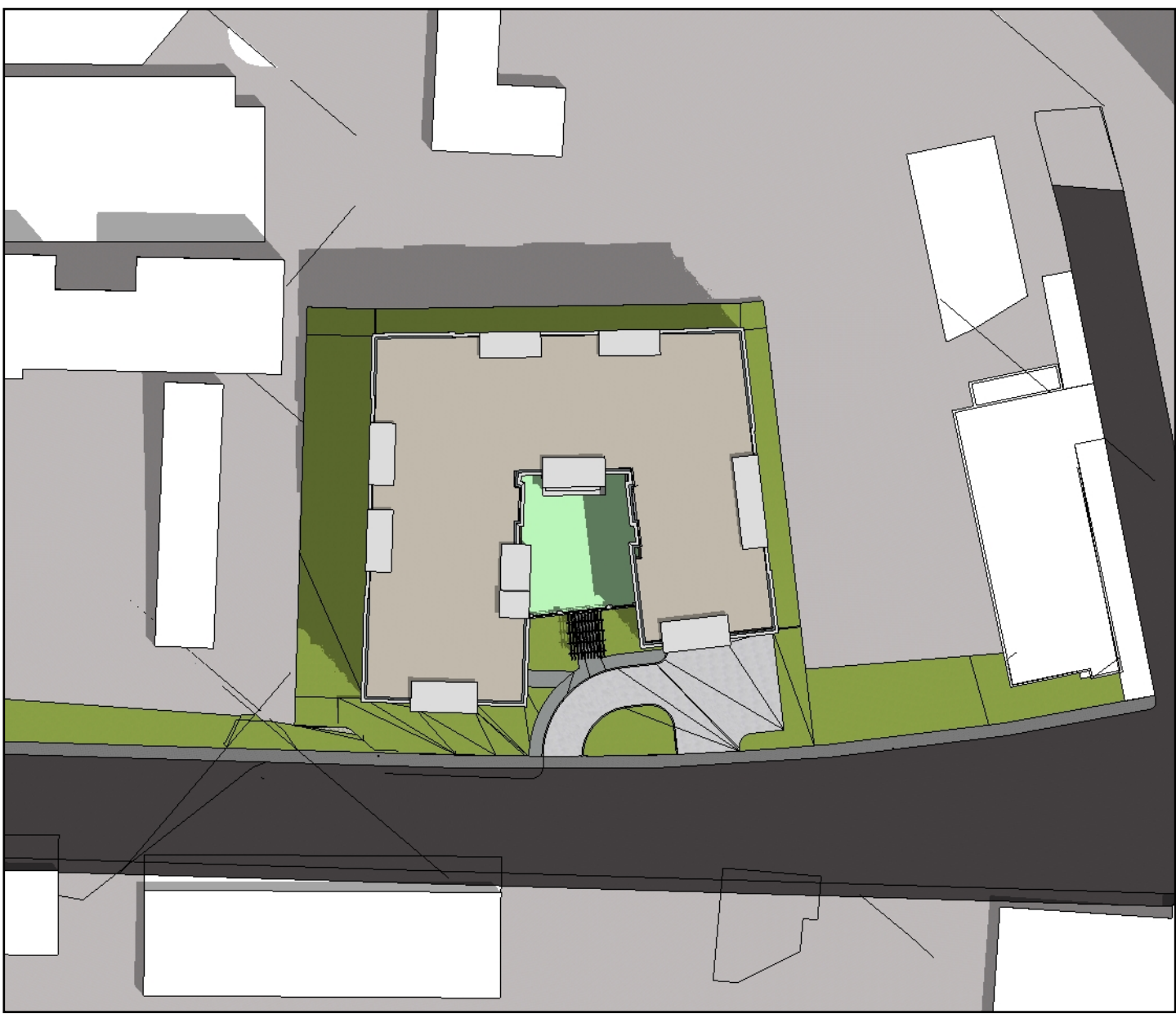
DECEMBER - 9:00



MARCH - 12:00



JUNE - 12:00



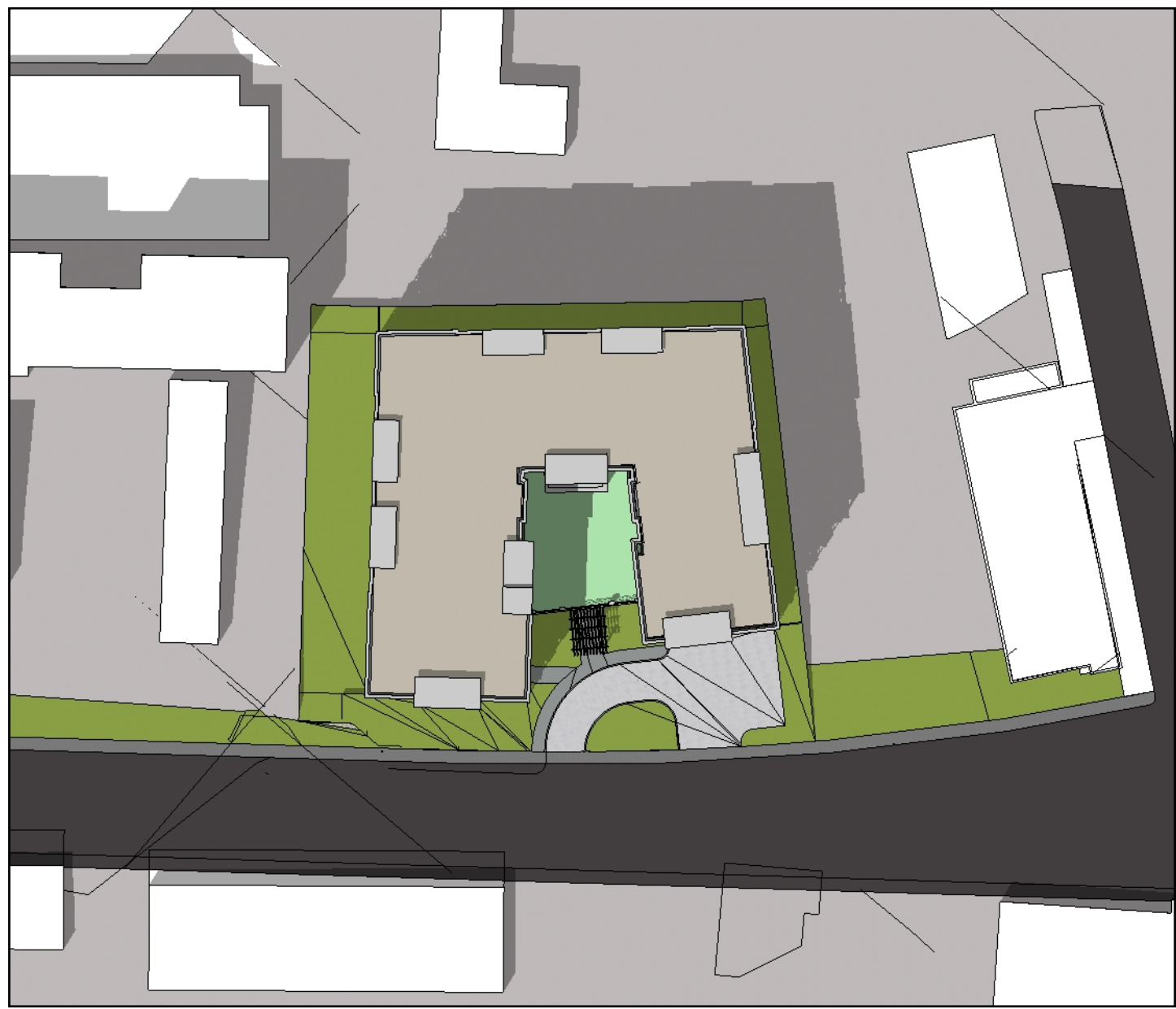
SEPTEMBER - 12:00



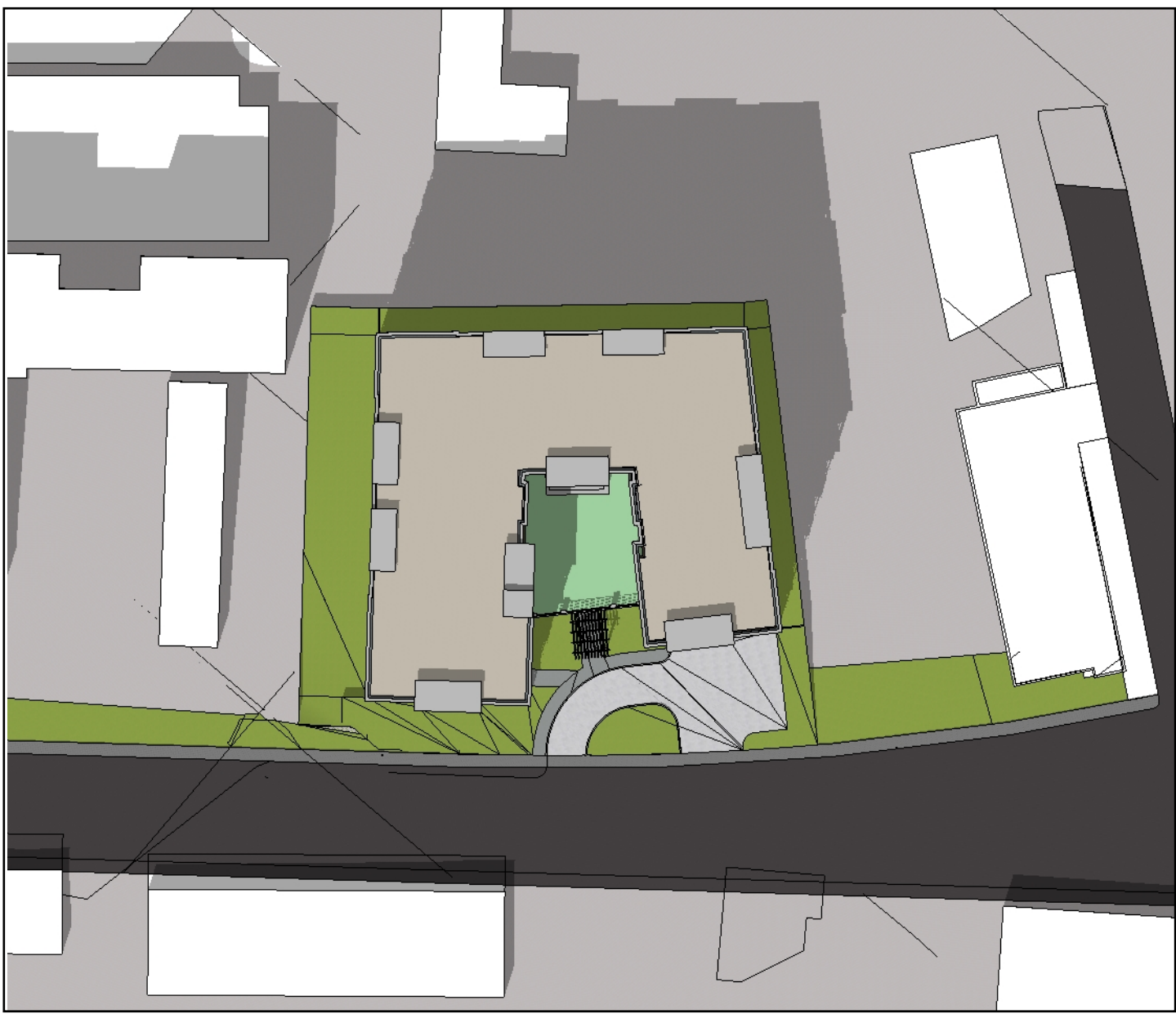
DECEMBER - 12:00



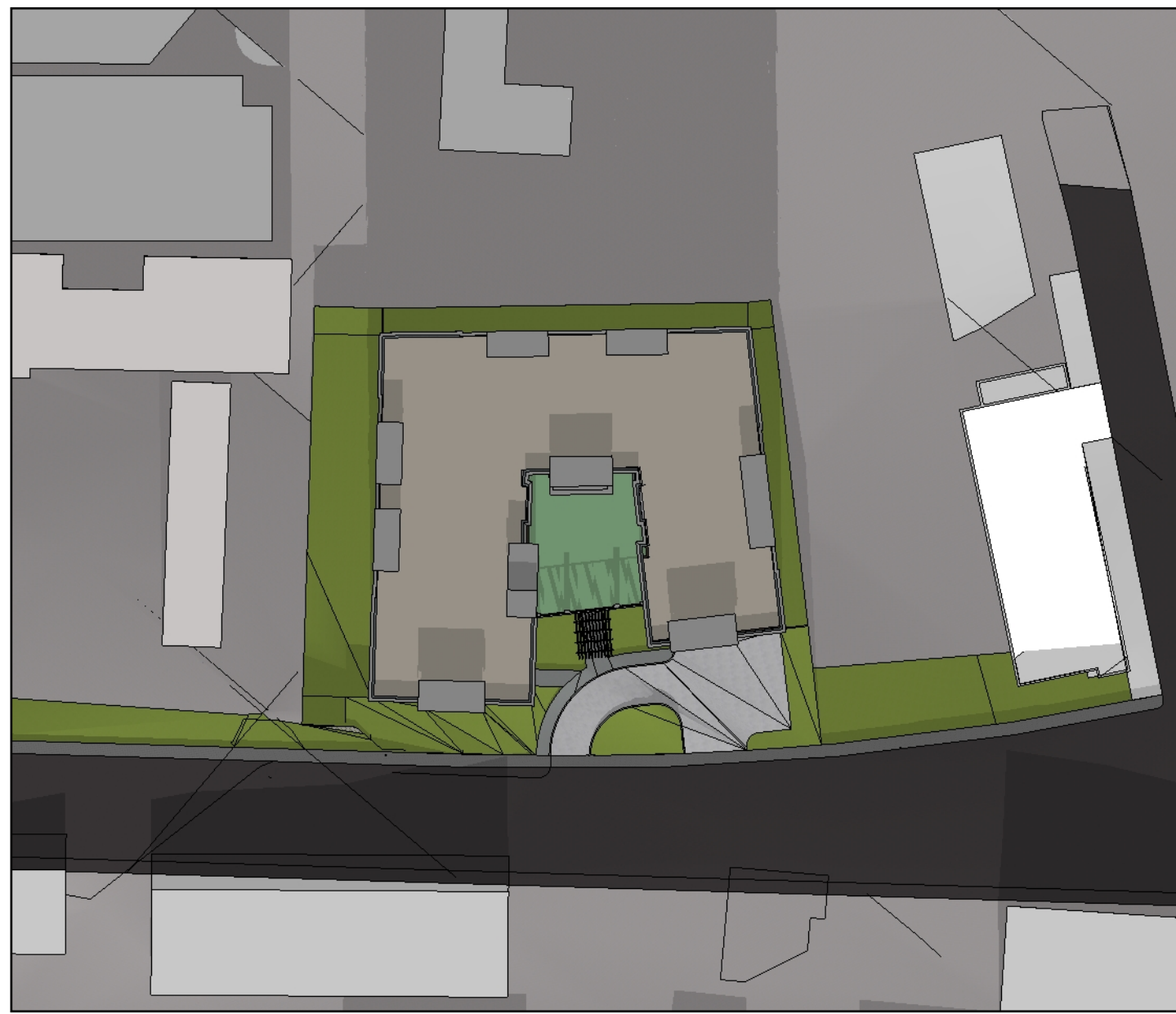
MARCH - 15:00



JUNE - 15:00



SEPTEMBER - 15:00



DECEMBER - 15:00

REVISIONS

Rev. 05/02/2025 - Planning Board Re-Submission

DONAHUE Architects inc.

21 MCGRATH HIGHWAY, QUINCY, MASS. 02169
Phone: 1-617-479-4122

18-28 OLD COLONY

SCHEMATIC SOLAR STUDY

Checked by: BD

Drawn by: WSS

Date: 02.14.2025

Scale: AS NOTED



Drawing No.

A - 400



1 VIEW - 1



2 VIEW - 2



3 VIEW - 3



4 VIEW - 4

<p>REVISIONS</p> <table border="1"> <tr> <td>Rev. 05/02/2025 - Planning Board Re-Submission</td> <td></td> </tr> <tr><td> </td><td> </td></tr> <tr><td> </td><td> </td></tr> <tr><td> </td><td> </td></tr> <tr><td> </td><td> </td></tr> </table>		Rev. 05/02/2025 - Planning Board Re-Submission									
Rev. 05/02/2025 - Planning Board Re-Submission											
<p>DONAHUE Architects inc. 21 MCCABATH HIGHWAY, QUINCY, MASS. 02169 Phone: 1-617-779-4122</p>											
<p>18-28 OLD COLONY</p>	<p>RENDERED VIEWS</p>										
<p>Checked by: BD</p>	<p>Drawn by: KLC</p>										
<p>Date: 02.14.2025</p>	<p>Scale: AS NOTED</p>										
<p> </p>											
<p>Drawing No.</p>											
<p>A - 500</p>											



1 VIEW - 1



2 VIEW - 2



3 MATERIAL DETAILS

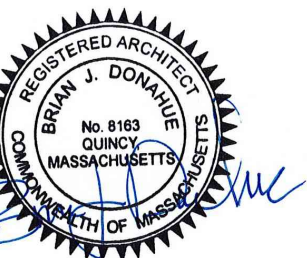
REVISIONS
Rev. 05/02/2025 - Planning Board Re-Submission

DONAHUE Architects inc.
21 MCCABETH HIGHWAY, QUINCY, MASS. 02169
Phone: 1-617-479-4122

18-28 OLD COLONY

RENDERED VIEW AND MATERIAL DETAILS

Checked by: BD
Drawn by: KLC
Date: 02.14.2025
Scale: AS NOTED



Drawing No.

A - 501