

Community Facilities

Introduction

Southampton County provides a variety of services to its residents through local government, public safety agencies, and the public education system. The County also has libraries and health care services available to its residents.

Local Government

Until recently, Southampton County was governed by a seven-member Board of Supervisors, which was comprised of members from each of the seven election districts. Supervisors served four-year terms and elect a Chairman and Vice-Chairman from their membership.

Redistricting was necessary after the 2020 US Census, however. Per the March 22, 2022 Board of Supervisors meeting agenda information, there were a number of hurdles in the redistricting process, which would typically have been completed prior to November 2021 general election. The delays in the redistricting process were impacted by:

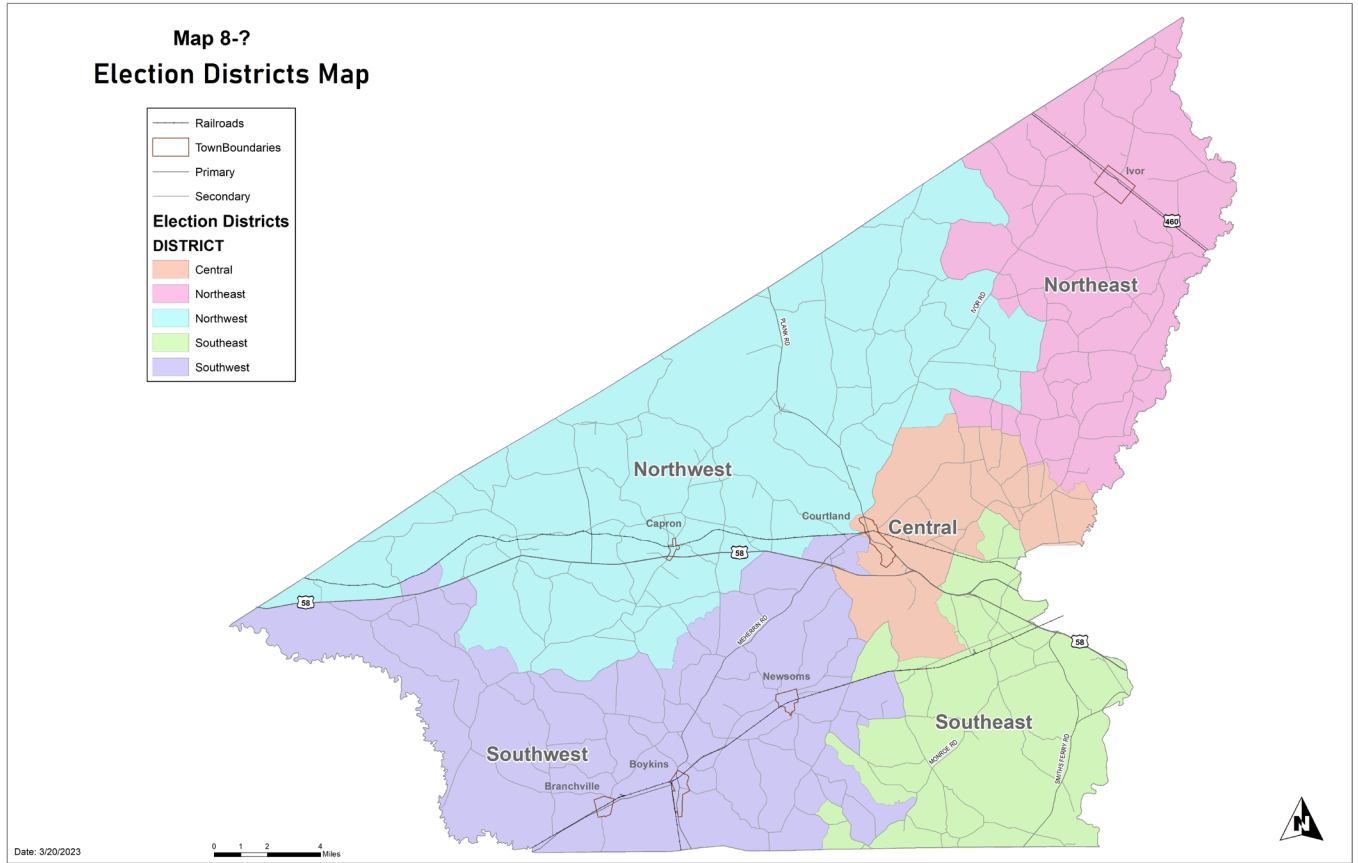
- late release of population data from the 2020 Census due to the COVID-19 pandemic,
- the change in Virginia law stating that the prison population needed to be counted in the locality of their last known address, rather than the locality of the prison they were in at the time of the census, except those with very long sentences,
- the change in Virginia law requiring each local precinct to be wholly within a single congressional district and delays in establishment of those districts in Virginia, and
- enactment of the *Rights of Voters Act* in 2021, which contained new public notice requirements associated with conversion of district seats to at-large seats, changes in election district boundaries, and/or consolidation or relocation of polling places.

These requirements caused the population of Southampton County to decrease with the net loss of 852 prisoners and persons in jail. That affected the population in the Drewryville District. Adding to the shift in population, most of the population growth in the preceding 10 years was in the eastern part of the County, with little growth in the western part. Additionally, the new Congressional District line split the Newsoms District, which was then prohibited.

With these changes, it was mathematically impossible to balance the population in seven (7) districts. Ultimately, the Office of the Attorney General approved reduction of the number of districts to five (5), with two (2) additional at-large seats, so as to retain the integrity of the Board. The two affected districts were Newsoms and Drewryville. The Supervisors who serve those two former districts will serve until their terms expire. Upon that expiration, those two seats will become at-large seats.

The five (5) new districts are known as:

- Northwest Election District, including Capron, Drewryville and Sebrell areas
- Southwest Election District, including Boykins, Branchville, and Newsoms areas
- Southeast Election District, including the Blackwater River and fairgrounds areas
- Central Election District, including Courtland, the Darden Mills area, and a portion of the Sedley area
- Northeast Election District, including Berlin, Ivor, and a portion of the Sedley area



Source: Southampton County GIS

The Board is responsible for levying taxes and setting policies and procedures for the citizens of Southampton County. The County Administrator serves at the pleasure of the Board and is responsible for daily operation of the County government. Most of the County’s administrative departments, the Department of Social Services, and the Department of Health are located in the 30,000 square foot Southampton County Office Center, which is located on the old Courtland Elementary School site and opened in June 1992. The Voter Registrar’s Office is located on the County Office campus as well. The Community Development Department is located in the former Woodlands building on Cheroenhaka Road, adjacent to the Public Utilities Department. The Public Works Department shares a campus with the Southampton County School’s Administration Office.

The Southampton Courthouse, located near the Nottoway River in Courtland, is undergoing extensive renovation and additions, and is scheduled for completion in early 2024. While the Courthouse is under construction, court functions are held split between a temporary building on the Courthouse campus in the City of Franklin and the former Hunterdale Elementary School.

Public Safety

Southampton County’s chief law enforcement officer is an elected Sheriff who serves a four-year term of office. The Southampton County Sheriff’s Department has 85 employees serving a number of functions, including law enforcement, court security, and corrections.

The Southampton County Jail and Annex, which houses up to 57 inmates, is a maximum security facility designed to house those persons who are sentenced up to twelve (12) months. It is also located in Courtland. This is an all-male facility, with female offenders sent to other facilities. The Southampton County Jail Farm, a 100-bed facility north of Capron, is leased from the Commonwealth and used as a work camp. It houses up to 100 non-violent male offenders in a minimum security environment who are eligible to work regular jobs within the community through the work release program to help gain financial means to meet their family obligations as well as to make restitution, as they near the end of their sentences.

The Virginia Department of Corrections operates several correctional facilities in Southampton County and also has a security ward at Bon Secours - Southampton Medical Center in Franklin. As of December 2022, the Deerfield Correctional Center housed 868 inmates. The Deerfield Men's Work Center 1 housed 17 inmates, while the Deerfield Men's Work Center 2 housed 63 inmates. In December 2022, the Secure Medical Facility at Bon Secours - Southampton Medical Center housed 8 inmates. The Department of Corrections Eastern Regional Office was located near the Deerfield facilities. All facilities except the hospital are located near on Old Belfield Road near Capron.

Fire and rescue service in Southampton County is provided by ten volunteer fire departments and six volunteer rescue squads. Fire departments are located throughout the County in Boykins, Branchville, Capron, Courtland, Drewryville, Franklin, Ivor, Hunterdale, Newsoms, and Sedley. Rescue squads are located in Boykins, Capron, Courtland, Franklin, Greensville, and Ivor. In September 2019, the City of Franklin and the County began discussing an agreement whereby the City would staff all four volunteer rescue squads in the County, 24 hours per day, 365 days per year. Each shift includes two service providers, one of whom is a Firefighter/Medic Advanced Life Support (ALS), and the other a Firefighter/EMT Basic Life Support (BLS). The agreement went into effect January 1, 2020. A joint oversight committee was formed to create standard operating procedures and to standardize uniforms. Agreements were made concerning revenues derived from ambulance billing for transports by the volunteer rescue squads and by the City. The contract is negotiated annually by March 15, and renews each year, with the right to cancel held by each locality with 180 days' notice.

Health Care

Bon Secours - Southampton Medical Center, a 219-bed facility, was originally established in 1963 as Southampton Memorial Hospital and is located on Fairview Drive in Franklin. The hospital is fully accredited by the Joint Commission on Accreditation of Health Care Organizations and is licensed by the Virginia Department of Health. It contains a 24-hour emergency room and offers a full range of services. The staff of the hospital includes more than 90 healthcare professionals as well as support staff, totaling approximately 450 employees in 2023.

Other health care facilities serving Southampton County include The Village at Woods Edge, a senior living community in Franklin near Bon Secours – Southampton Medical Center. The Village offers 55 one and two-bedroom private apartment homes for independent senior adults. An additional forty-two private suites are available in The Manor, a separate but adjoining assisted living facility. The Manor provides short-term rehabilitation and memory care. The East Pavilion is a 116-bed long-term care facility and is operated by Bon Secours – Southampton Skilled Nursing and Assisted Living as part of the Medical Center. The Courtland Rehabilitation and Health Care Center is a 90-bed facility located within the Town of Courtland with intermediate care service provided by a licensed staff on duty 24 hours a day.

Horizon Health Services, a community-based health services clinic, operates in Ivor as the Ivor Medical Center, a Federally Qualified Health Center. This is a low-cost medical clinic that provides primary care to residents of Southampton, Sussex, Surry, and Isle of Wight counties. The center offers physicals and wellness care, as well as the care of chronic conditions, to all including those with and without health insurance. Immunizations, school and sports physicals, laboratory and mental health services, as well as pharmacy services, are available. The Ivor Dental Center is located on the site as well, providing low cost dental care to local residents. The Ivor Medical Center has been in operation since 1979, and the current facilities were opened on Ivor Road just south of the town limits of Ivor in 2009. The dental center opened in 2010.

Libraries

The County is served by the Blackwater Regional Library, which is headquartered in Courtland and has branches throughout the region. The Walter Cecil Rawls Library and Museum is located on Main Street in Courtland and is also affiliated with the Virginia Museum. It opened in 1958 and was renovated in Spring 2001. The Rawls Library currently holds 156,547 volumes. The Blackwater Regional Library system also provides quality data bases free of charge to its patrons, including:

- A to Z the USA,
- Chilton Library,
- Consumer Reports,
- Find It Virginia,
- Genealogy Resources,
- Job & Career Accelerator,
- Learning Express,
- NoveList Plus and NoveList K-8 Plus,
- Rocket Languages, and
- World Book Web.

The Paul D. Camp Community College Library, located in Franklin, holds approximately 23,000 volumes and has 200 periodical and newspaper subscriptions. In addition, the Library provides access to CD-ROMs, the NOTIS Library System, and the Internet. These services are available to the citizens of Southampton County for research, to promote literacy, and to support professional development.¹

Parks and Recreation

The rural nature of Southampton County provides opportunities for its citizens to enjoy nature in a variety of ways. Southampton County does not have a parks and recreation department, but there are many recreational opportunities available to residents. Hunting, fishing, and boating are popular recreational activities in the County.

The 2008 Southampton County Parks and Recreation Plan included a survey and the survey found that the most common recreational activities in which County residents participate involved youth and organized sports. Almost three-fourths of the respondents said that their community needs more youth activities, and over half felt more adult activities are needed, with most citing organized sports programs as the types of activities most sought. Residents who participated in the survey cited the need for baseball fields, basketball courts, and playgrounds.

¹ Paul D. Camp Community College, *Get Ahead*, p 56.

Community not-for-profit organizations, such as local baseball organizations in the towns, provide ball fields and playgrounds in some areas. Other recreational opportunities available in the County include horseback riding, water sports and golf.

Southampton County has three navigable rivers – the Blackwater, Meherrin, and Nottoway – that provide many opportunities for boating, fishing, and other recreational water sports. Public water access is provided at four public boat landings maintained by the Virginia Department of Game and Inland Fisheries – three on the Nottoway and one on the Blackwater. Because of their natural and recreational value, the Nottoway and Blackwater Rivers for the entire lengths in Southampton County have been designated as Virginia Scenic Rivers. The Scenic Rivers program as outlined in the 2007 Virginia Outdoors Plan provides the following benefits to waters with this designation, including:

- Providing opportunities to consider scenic, cultural and historic resources in planning and design.
- Requiring Federal Energy Regulation Commission reviews of hydropower or related projects proposals to include multiple river values for affected rivers.
- Encouraging closer review of projects and proposals by state agencies and localities.
- Requiring General Assembly authorization for dams.
- Allowing for continued appropriate riparian land uses.
- Allowing state, local and federal projects on designated waterways to be reviewed and monitored by the Virginia Scenic River Board.
- Providing a framework for appointment of a local Scenic Rivers Advisory Committee.
- Providing eligibility for land use tax considerations, if locally adopted.
- Providing the potential for additional economic benefits to the adjacent community.

This designation will help to protect the rivers for public use and enjoyment.

The 2007 Virginia Outdoors Plan contains some additional observations and recommendations regarding recreational opportunities in the County, including the following:

- It is noted that while private organizations may provide recreation programming for the County in the short term, they are not charged with planning for the long term recreation, park and open space needs of a community.
- Due to extremely high demand for public access to the waters of the Commonwealth, any large acreage waterfront property that becomes available on the major tidal rivers or their tributaries in the region should be evaluated for potential acquisition and development as a regional or state park. Potential acquisitions should be explored along the Nottoway River in Southampton County.
- Local, regional and state agencies and organizations should implement the Trans Virginia Southern Trail that will stretch from the Cumberland Gap to the Chesapeake Bay through the region. This trunkline is comprised of many trails existing or underway. The network will connect the mountains to the sea and stimulate ecotourism across Southern Virginia. In Hampton Roads, the corridor could go through the City of Virginia Beach, Chesapeake County, City of Suffolk, Isle of Wight County and Southampton County.
- Regional and local agencies should provide adequate support facilities and services, such as restrooms, concessions, parking and maintenance for existing and proposed public water blueways including the Nottoway River Water Trail and the Blackwater River Water Trail.
- Opportunities to traverse Virginia's scenic and cultural landscapes are enhanced through nationally recognized designation as a scenic highway or Virginia Byway. State Route 35 in Southampton County is a Virginia Byway route.

- Flood abatement strategies for the Blackwater River should favor protection of existing forested wetlands in the watershed. State agencies and private organizations, such as The Nature Conservancy, are encouraged to acquire and manage bottomland hardwood tracts along the river.
- Establish a state forest in Sussex and Southampton Counties with opportunities for public access to outdoor recreation. The Nature Conservancy has secured large tracts from International Paper in the vicinity of the Piney Grove Nature Preserve. The Virginia Department of Forestry should acquire this property as a state forest.

There are a number of recreational opportunities available in Southampton County. The Cypress Cove Country Club provides members with access to an 18-hole golf course and also offers a swimming pool, six lighted tennis courts, a golf pro shop, and a clubhouse with dining facilities. The Nottoway River Ranch, located on the Nottoway River south of Franklin, has more than 75 acres of wooded land. It offers fishing, four-wheeling, canoeing, camping, horse boarding, nature watching, and walking and riding trails. Hunting outfitters are located within Southampton County, providing hunting and lodging as well as off-season outdoor activities. Equestrian facilities are also available and Graz'n Acres Therapeutic Riding Center is an accredited center that works with riders with differing abilities. The Beaches to Bluegrass Trail, a trail traversing the southern part of Virginia from the mountains of southwestern Virginia to the Chesapeake Bay and the ocean, is under study by the Virginia Department of Conservation and Recreation (DCR). It has been considered by DCR in rural areas such as Southampton County that the trail may be signed bike trails on existing public roads.

Access to the Blackwater and Nottoway Rivers provides recreational opportunities for County residents and visitors. The Virginia Department of Game and Inland Fisheries has four (4) boat ramps available to the public. Access to the Blackwater River is available at 37351 Unity Road just west of the Isle of Wight County line. Access to the Nottoway River is available from a ramp north of Carys Bridge Road east of Eppes Drive, a ramp located at 33275 Smiths Ferry Road in the area south of Forks of the River Road, and south of General Thomas Highway at its intersection with Shady Brook Trail.

The Franklin-Southampton County Fair is held the second week of August in the Agri-Civic Center on New Market Road. The 2023 Fair will be its 42nd year. The fair reflects and celebrates the agricultural heritage of the region. The fair is a four-day event that includes livestock, horticulture and field crop exhibits, contests for home arts, art and photography, and science and technology. Other entertainment includes musical entertainment, Fair Queen contests for all ages, a talent show, vendors, rides and many other events. The Fairground is used throughout the year for other community events as well.

Per the 2008 Parks and Recreation Plan, respondents considered new recreational opportunities, creating new parks, and preserving underdeveloped land the highest priorities to be supported. Improving waterway access and supporting arts and cultural activities were perceived as being less important by those surveyed. The research for the Plan found that three-fourths of the respondents would support the creation of a parks and recreation fund for the County, with the majority favoring a user fee for access to facilities such as a pool or indoor gymnasium. Some approved of supporting the fund with taxes to some extent, or a combination of user fees and taxes. The creation of a citizen committee to monitor all expenditures of such a fund was seen as needed should such a fund be instituted.

Historic and Cultural Resources

The Code of Virginia provides local governments with a number of tools that support the preservation of historic sites and structures. Included among them are the ability to designate historic districts and the authority to adopt local ordinances that govern the treatment of historic resources. In addition, the Code of Virginia requires that historic areas be surveyed and studied in the preparation of the comprehensive plan. Section 15.2-2224 states that if a locality chooses not to survey and study historic areas, then the locality must include historic areas in the comprehensive plan if they are identified and surveyed by the Department of Historic Resources. The Code also states that zoning ordinances shall be designed to give reasonable consideration to protection against destruction of or encroachment upon historic areas.

Southampton County contains several sites of architectural, cultural, and historical significance. Identification and preservation of these sites are important for a number of reasons. Historic sites can provide hands-on educational experiences, particularly for the County's school children. Furthermore, rehabilitation and preservation of historically significant structures prevents blight and provides a positive economic impact on County tax revenues. Preservation of historic sites shows respect to the past and helps lead to understanding. Finally, historic sites and properties can be used to promote tourism in the County, providing an added boost to the local economy.

There are twenty sites in Southampton County that are currently listed on the National Register of Historic Places and the Virginia Landmarks Register (Table 2-4). Some of these properties include individual houses representing a variety of periods in American architectural history, from Federal to Queen Anne. Some are sites that are reflective of the indigenous history of the County. Three sites, the Courtland Historic District, The Nottoway of Virginia, and the Sebrell Rural Historic District, includes large areas of the County. The Courtland School, constructed as a Rosenwald School, is included in the listing. Additional historic properties or districts may be added to the Registers as a result of further study.

THE NATIONAL REGISTER OF HISTORIC PLACES – THE VIRGINIA LANDMARKS REGISTER LISTED PROPERTIES SOUTHAMPTON COUNTY, VA

Property	Location	USGS Quad	VLR	NRHP
Aspen Lawn	4438 Hicksford Road	Adams Grove	6/15/2004	4/2/2006
Beaton-Powell House	32142 Main Street	Boykins	9/18/2008	11/14/2008
Beechwood	NE of Courtland on VA 643	Vicksville	9/20/1982	2/2/1983
Belmont	NE of Capron off VA 652	Capron	7/18/1977	10/4/1977
Brown's Ferry	E of Drakes Corner of VA 684	Sunbeam	3/21/1983	6/19/1983
Courtland Historic District	Town of Courtland	Courtland	12/12/2019	3/19/2020
Courtland School	25499 Florence Street	Courtland	6/16/2016	8/15/2017
Elm Grove	NE of Courtland on VA 646	Courtland	5/16/1983	7/25/1983
Fortsville	Intersection of Rt. 612/Rt 611	Drewryville	6/2/1970	9/15/1970
Mahone's Tavern	22341 Main Street	Courtland	3/20/2008	5/29/2008
The Nottoway of Virginia	Countywide	NA	9/17/2020	4/26/2021
Rochelle-Prince House	22371 Main Street	Courtland	9/30/2010	1/7/2011
Rose Hill	NE of Capron on VA 635	Capron	9/19/1983	1/1/1984
Rotherwood	15410 Southampton Parkway	Capron	12/8/2022	Pending
Sebrell Rural Historic District	Bordered by Nottoway River, Assamoosick Swamp, and	Sebrell	9/30/2010	8/27/2013

	Old Hickory Road			
Simmons-Sebrell-Camp House	Zebulon Simmons Tract	Sebrell	6/19/2007	10/24/2007
Sunnyside	VA 673	Capron	10/22/1985	7/9/1986
Rebecca Vaughan House	26315 Heritage Lane	Courtland	9/30/2010	1/7/2011
Vincent House	23016 Main Street	Capron	9/11/2001	1/17/2008
Millie Woodson-Turner Home Site	Indian Town Road and Cobb Pond Drive	Capron	9/17/2020	4/26/2021

Source: Virginia Department of Historic Resources

Southampton Heritage Village and Agriculture and Forestry Museum

The Southampton Heritage Village and Agriculture and Forestry Museum is located on approximately ten acres in Courtland. The museum and surrounding properties displays antique farm equipment, hand tools, and household items from 200 years of Southampton history. There are both indoor and outdoor displays. Heritage Village includes a 1950s country store, a one-room schoolhouse, and a number of buildings, including a dwelling and a church. The museum includes an extensive electric train exhibit, models of historic buildings, a model of historic Courtland including the train station, local fossils and other archeological finds, military memorabilia, and many other items of local history. Events are held throughout the year, and school groups visit the museum regularly. Operating equipment includes a 1920s sawmill, grist mill, 1880s printing press, which are in use during festivals during the year. Events each year include Down Home Day, Heritage Day, and the Polar Express during the Christmas season.



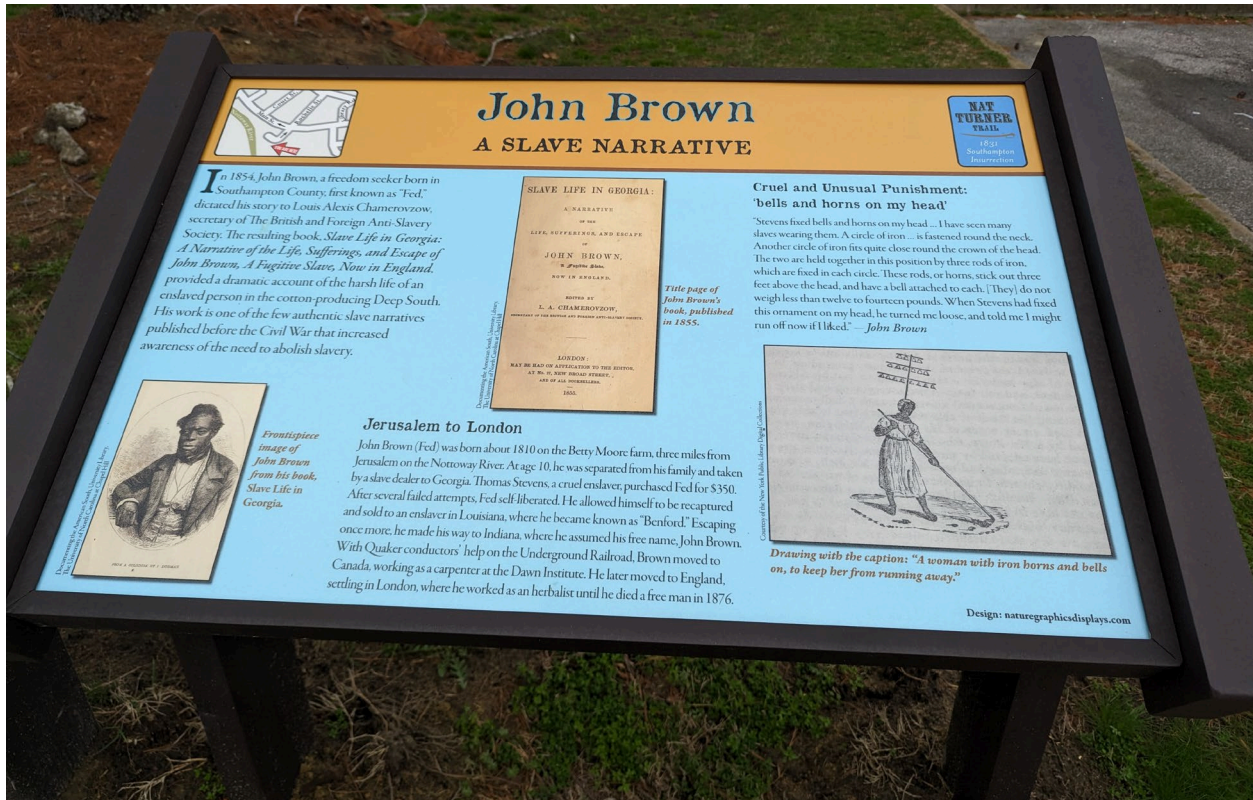
Source: FSEDI, Down Home Day

1831 Insurrection Trail

The Southampton Heritage Village and Agriculture and Forestry Museum property includes the Rebecca Vaughan House, in conjunction with the 1831 Insurrection Trail project. The house, moved from its original location, was the scene of the last killings of its occupants during the Southampton insurrection. Nat Turner's Rebellion was one of the most infamous and successful slave revolts in American history. While hundreds of people perished during this uprising, the 1831 Southampton Insurrection is a powerful lesson about slavery and the causes of the American Civil War. Nat Turner's followers traveled down still-existing roads as they

marched towards the county seat - Jerusalem (now known as Courtland). When the rebellion was suppressed, Courtland became the scene of trials and executions. This exhibition serves to bring this history to the wider public. The Rebecca Vaughan House is the beginning of the Insurrection Trail. The trail will include 19 signs in Courtland for a walking tour, and a phone app and GPS to guide travelers on the driving tour throughout sites in the County.

1831 Insurrection Trail sign



Source: Circle C Communications

The Rebecca Vaughan house has undergone renovation in recent years and had a temporary opening in October 2022. Upon its final opening, the public will learn about the rebellion and its sites via an interactive map as well as artifacts such as Nat Turner's sword and the lock from his jail cell. Visitors will be able to acquire a brochure detailing a walking tour through Courtland and a driving tour throughout much of the County that will take visitors to numerous places where travelers can witness the historic landscape to learn about the rebellion. A total of nineteen (19) signs will be placed in Courtland and throughout the County telling the story of the insurrection and aftermath.

As of January 2023, final improvements to the Rebecca Vaughan House (floors, exterior painting, cleaning, window washing, moving floor coverings and furniture) were complete. The trail signs have begun to be installed, with the remaining signs to be installed at the completion of the courthouse renovations.



Source: FSEDI, Rebecca Vaughan House

Rawls Museum Arts

Rawls Museum Arts shares property with the Walter Cecil Rawls Library in Courtland. The museum was located within the library until 1999, when the new gallery opened on the grounds. The gallery houses the main gallery, the Francis Gallery which houses the Childrens' gallery, and an extensive permanent collection. The museum has visiting curators, lecturers, artists, performers and educators. The facility provides for short-term exhibitions, and educational opportunities for the community. The Rawls Museum Arts Educational Outreach Program provides area students the opportunity to experience the creative process first-hand, and events are held throughout the year for the community.



Source: FSEDI, Rawls Museum Arts gallery

Nottoway Indian Tribe of Virginia Community House & Interpretive Center

The Nottoway Indian Tribe of Virginia Community House & Interpretive Center, located at 23186 Main Street, Capron Virginia, offers a local history exhibit and meeting space for the Tribe and for Tribal activities. Designated as a history trail site, there is an outdoor exhibit for travelers who stop for a visit. The Nottoway Tribe has had a long history from first contact with Europeans in the 1600s, through early trade relations with other Tribes and Virginia's Colonial government, through the expansion of non-indigenous populations eastward, to the evolution of the Nottoway as citizens of Virginia.

The Community House itself is an historic building. It is located on land that was originally a portion of the Square Tract of the Nottoway Reservation. In the early 1900s, the building began as an Odd Fellows Lodge and later became the Prince Hall Order Masonic Lodge.

Since 2012, here in Southampton County, the Tribe's Community House is active with outreach presentations to school groups, educators, cultural workshops, an annual Nottoway River Clean River Day cultural event and a community supported Artisan Market. Classes and demonstrations on beading, quilting, flute making, artifact collecting, indigo dyeing, storytelling and community "Let's Talk" and more are held periodically. The Nottoway Tribe's cultural involvements and outreach go beyond powwows, as demonstrated in the visitors who have spent time at the Interpretive Center's exhibit in Capron. The center is open by appointment and on the first Saturday of the month, May through December.



Source: Nottoway Indian Tribe of Virginia

Cheroenhaka (Nottoway) Indian Tribe of Virginia - Cattashowrock Town

The Cheroenhaka (Nottoway) Indian Tribe of Southampton County, Virginia was reorganized February 2002 and State Recognized in 2010. In 2005 the Cheroenhaka (Nottoway) Indian Tribe of Virginia received its 501(c)3 tax exempt status under the name The Cheroenhaka (Nottoway) Indian Tribal Heritage Foundation, Inc. The Heritage Foundation became the tax exempt arm of the Tribe. In 2009 the tribe purchased 100 acres of land and in 2016 purchased an adjoining 163 acres off Cheroenhaka Road, near Courland, Virginia. From 2011 to 2012 the Tribe built a replica 17th Century Native American Palisade Village called Cattashowrock Town on its 263 acres of land. The Palisade Village is a facsimile of what William Byrd, II of Westover wrote about when he visited the tribe's reservation in Southampton County on April 7 and 8, 1728. Cattashowrock Town provides educational opportunities for educators, students and the public to learn about the ethno-history, culture and traditions of the Iroquoian Speaking Cheroenhaka (Nottoway) Indians of Southampton County. The site includes interpretive walking and bike riding trails guided by signage identifying native flora and fauna indigenous to the area, both in the tribe's Iroquoian language and in English. Three tribal events are held during the year including the Green Corn Dance Powwow in July, a Native American Revival in September, and the Intertribal Corn Harvest Powwow and School Day the first weekend of November. Approximately 94,000 indigenous Long Leaf Pines from native Virginia seed sources were planted on the property between 2011 and 2019 to advance reforestation of the site in cooperation with the Virginia Department of Conservation and Recreation, the Virginia Department of Forestry, the U.S. Fish and Wildlife Service, and The Nature Conservancy. In recent years the tribe has been in high demand as Native Americans History Month guest speakers for all Military Installations throughout Hampton Roads, as well as at universities, colleges, elementary, and high schools in Virginia and North Carolina, as well as for other civic organizations within the state of Virginia. Cattashowrock Town is open for historical guided tours - March through November.



Source: Cheroenhaka (Nottoway) Indian Tribe of Virginia



Source: Cheroenhaka (Nottoway) Indian Tribe of Virginia

Solid Waste Management

Household solid waste disposal and recycling in Southampton County is handled through a system of refuse collection and transfer sites. The County currently operates fourteen refuse collection sites at various locations. From these sites, solid waste is transported by the Department of Public Works to the Southeastern Public Service Authority (SPSA) transfer stations located in Boykins, Ivor, and just outside of Franklin. The county sites and their addresses are listed below.

TABLE 6-1 SOLID WASTE MANAGEMENT COLLECTION SITES SOUTHAMPTON COUNTY, VIRGINIA	
<i>Name</i>	<i>Address</i>
Adams Grove	24389 Park Drive
Berlin	12427 Ivor Road
Branchville	16154 Old Branchville Road
Capron	22478 Pine Level Road
Courtland	22802 Meherrin Road
Drewryville	11264 Old Belfield Road
Flaggy Run	29388 Flaggy Run Road
Joyner's Bridge	33268 Joyner's Bridge Road
Monroe	30080 Monroe Road
Newsoms	29365 Statesville Road
Sebrell	22244 Barn Tavern Road
Sedley	17158 Johnsons Mill Road
Southampton Meadows	33444 Maggie Street
Unity	35350 Unity Road

Source: Southampton County

The County upgraded its collection sites to being staffed by attendants beginning in September 2006. This has reduced the number of non-residents using the sites for disposal of their refuse and has reduced the amount of solid waste that was not permitted at the site, including construction debris and commercially-generated solid waste. Since the staffing of the solid waste sites and other changes, the monthly quantities of solid waste has decreased steadily, with the average monthly solid waste tonnage sent to SPSA in FY 2022 being just over 60% of the solid waste sent to SPSA in FY 2006, as the population increased slightly.

**SOLID WASTE QUANTITIES
MONTHLY AVERAGE**

FY	TONS
2006	1,426
2016	735
2017	755
2018	771
2019	903
2020	839
2021	855
2022	845

Solid waste is being diverted from SPSA in a number of different ways in an effort to reduce the payments required to dispose of solid waste. Wood and vegetative materials are accepted separately at a number of the collection sites, as well as used motor oil and household recyclables. Recyclables are collected curbside in the towns of Boykins, Courtland, and Newsoms, and the neighborhoods of Hunterdale, Scottswood, and Edgehill.

Outside of the towns that provide curbside pick-up for refuse and recyclables, Southampton County does not provide curbside pickup for refuse or recyclables. All refuse must be transported by residents to the transfer stations. All other wastes, including Household Hazardous Wastes, are collected by SPSA at the Franklin Transfer Station or the Regional Landfill in Suffolk. Southampton County residents may dispose of residential waste at any other SPSA facility free of charge.

Water and Wastewater Facilities

Southampton County owns and operates five water systems, providing residential, commercial and industrial service throughout the County. Table 6-2 shows the location, average daily use, and capacity of each system. Southampton County received funding from the Virginia Department of Health to assist with improvements to the Drewryville water system. The funds installed a new water well and in-ground storage tank to serve the Drewryville community by providing resiliency in the water system. The Towns of Boykins, Branchville, and Newsoms, which are listed separately, are served by a regional system. The Towns of Capron, Courtland, and Ivor operate separate municipal water systems to serve their residents.

Southampton County also operates its own wastewater systems, which are listed in Table 6-3. The wastewater system located in Boykins serves the towns of Branchville and Newsoms as well. The former Courtland Wastewater Treatment Plant was replaced with a new, expanded wastewater treatment plant in 2010. The new plant was designed with a design flow of 1.25 MGD (million gallons per day). The plant was designed with provisions for expansion up to 3.75 MGD in 1.25 MGD increments. Additionally, the Courtland Interceptor pump station was replaced in 2010 as well. This plant was designed with an initial capacity of 0.72 MGD with provision to expand to a peak flow of 1.8 MGD. This plant serves the Riverdale Elementary

School, the High Street Methodist Church, and the existing residences on Camp Parkway. It will also serve any future development in the area. In 2006, the Timmons Group submitted a proposal to complete a master plan for the Courtland Wastewater Treatment Plant (WWTP) and the area served by the plant. The Courtland WWTP Master Plan is part of the expected 2025 Countywide Water and Sewer Plan. Wastewater at Edgehill, which is listed separately in Table 6-3, is now treated at the Franklin Sewage Treatment Plant, but should funding become available, Edgehill wastewater would be directed to the County's new facility instead of to Franklin. All other areas of the County are served by private on site systems.

Regional Water Utilities

Locality	Average Daily Use	Maximum Capacity
Boykins/Branchville	107,200 GPD	522,400 GPD
Drewryville	9,400 GPD	35,000 GPD
Edgehill	10,300 GPD	33,200 GPD
Newsoms	32,400 GPD	192,000 GPD

Source: Southampton County Utilities

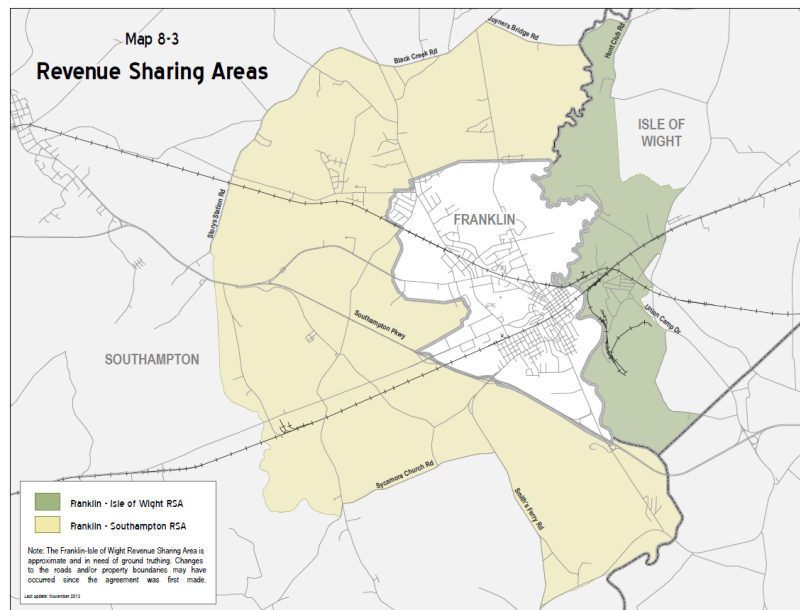
Regional Wastewater Systems

Locality	Average Daily Use	Capacity Use
Boykins	180,000 GPD	590,000 GPD
Courtland	260,000 GPD	990,000 GPD
Edgehill	23,000 GPD	40,600 GPD

Source: Southampton County Utilities

GPD: Gallons per day

Southampton County has an inter-locality agreement with the City of Franklin to work jointly on projects of a commercial/industrial nature. The agreement has been in place since 1999 and allows the County and the City to cooperate on commercial and industrial water and sewer extension projects. Map 6-3 shows the agreement area.



Source: Southampton County GIS

Community Facilities Implementation Strategies

Protect and enhance important historical and cultural features

- a. Support programs and initiatives that preserve important historic, archaeological, cultural, and scenic assets of the County.
- b. Support local civic leagues and cultural, environmental, and historical organizations to build strong community spirit.
- c. Pursue grant funding to complete a survey of architecturally and historically significant structures and sites.
- d. Participate in regional effort to map historic and archeological resources.
- e. Coordinate housing code enforcement/redevelopment projects with the State to ensure that any significant architectural details or buildings are identified and preserved.
- f. Coordinate public works projects with the State to ensure the identification and preservation of significant archaeological sites.
- g. Support historic preservation districts and commissions in the County and seek financial and technical assistance to study the development of zoning regulations that would include historic areas.
- h. Encourage efforts to maintain and repair historic structures in the County.
- i. Study regulations to require that redevelopment efforts be consistent with the historic preservation strategies contained in this plan.
- j. Promote heritage tourism as an industry in the County.

Enhance Recreational Opportunities

- a. Work with and support financially when possible community groups, such as the community baseball organizations, to provide sports and recreational facilities for County residents.
- b. Encourage the development of sound, planned, and desirable commercial recreational and tourism sites in the County, including facilities that promote heritage/historical tourism, cultural tourism, and eco-tourism.
- c. Amend zoning ordinance to permit facilities for farm tours, agri-tourism facilities, and other similar uses in the agricultural zoning districts.
- d. Create a printed map and a link on the County website showing public and commercial recreational offerings in the County.
- e. Work with Franklin Southampton Economic Development Inc. on tourism and recreational facility development.
- f. Work with local historical and cultural organizations, including organizations like the Blackwater Regional Library and the Rawls Museum Arts, to enhance educational, recreational and tourism opportunities. Provide funding as available.
- g. Evaluate and enforce existing local hunting laws and regulations.
- h. Seek opportunities to more fully utilize the Franklin Southampton County fairgrounds on a year-round basis.
- i. Work with agencies such as the Department of Game and Inland Fisheries and the Department of Conservation and Recreation to enable the development of outdoor public recreational facilities. Ensure appropriate marking of access to such facilities.
- j. Consider establishment of a funding mechanism for parks and recreational facilities, through the proffer program, user fees, grants, meals or bed taxes, or other available means.

- k. Work with the School Board to seek ways to make public school playgrounds, fields, and tracks available to the public when not in use by the schools.
- l. Make available in print and on the County's website information about the State Scenic Rivers program and access points to the Nottoway and Blackwater rivers. Ensure the precepts of the State Scenic Rivers program that require additional review of specific projects, such as hydroelectric projects or dams, are adhered to, helping to retain the scenic qualities of the rivers.
- m. Promote healthy lifestyles by seeking recreational opportunities for all ages, interests, and abilities.
- n. Use the 2008 Southampton County Parks and Recreation Plan as a guide to developing parks and recreation programs and facilities, incorporating the recommendations into Capital Improvements Planning where appropriate and as funds are available.

Support Community Services

Infrastructure

- a. Develop and periodically review a County master water and sewer plan.
- b. Provide administrative and financial policy guidelines for planning and extending utilities.
- c. Support programs and initiatives to minimize pollution of surface and ground water.
- d. Continue to seek regional cooperation to correct water and sewer system deficiencies and promote expansion of existing facilities and/or construction of new facilities that meet common needs, including study of the feasibility of a combined water and wastewater system with the City of Franklin.
- e. Seek State and Federal grant monies to implement the recommendations for water and sewer improvements cited in this plan and other water and sewer plans developed for or by the County.
- f. Encourage private interests to design and dedicate to public use new water and sewer systems for communities and subdivisions to accommodate future development.
- g. Require water and sanitary sewer extensions by private entities for new residential and non-residential development based on planned uses and densities.
- h. Consider options to work with water and sewer providers such as the Hampton Roads Sanitation District and the Sussex Service Authority to provide such services along the U.S. 460 corridor.
- i. Encourage adaptive and shared use/reuse of community facilities.
- j. Coordinate plans for utilities and infrastructure improvements so as to concentrate urban-type development in areas planned to accommodate this type development.
- k. Direct growth to areas where facilities and infrastructure exist or are planned. Cooperate with the City of Franklin to ensure planned development enhances both localities in areas where the two localities abut and within the revenue-sharing areas.
- l. Support the establishment of community-oriented programs which are focused on more complete use of school facilities.
- m. Work to ensure all qualifying residents have access to social service programs as necessary.
- n. Support social service programs which tend to reduce dependency upon the government and which encourage individuals and families to be self-sustaining.
- o. Involve the Planning Commission in the development, implementation, and update of the capital improvements plan to ensure that community facilities are scheduled in a manner compatible with the financial capability of the County. Continue annual review of Capital

Improvements Plan by Planning Commission, including participation by County departments and participating agencies to prioritize requests.

- p. Support efforts to improve the state of health of all citizens. Seek to facilitate access to both emergency and on-going medical, dental, and mental health care for all residents regardless of financial means.
- q. Develop a strategy to deal effectively with buildings that are left unattended in a dilapidated state and continue enforcement procedures to eradicate dilapidated buildings. Fund enforcement of County ordinances that lead to elimination of blight, including building demolition and vegetation management.
- r. Develop a program to recognize positive actions leading to significant rehabilitation and/or improvement of properties and buildings in Southampton County.
- s. Support and encourage highway beautification programs such as Adopt-a-Highway.
- t. Review County construction projects with an eye toward life-cycle costs as well as initial-investment costs.
- u. Encourage and support appropriate internet access for all residents and businesses by 2030.
- v. Ensure County GIS system is complete and correct to include accurate building footprints, parcel lines, infrastructure locations, zoning designations, Land Use Plan designations. Monitor to maintain accuracy. Consider cooperation with the City of Franklin to provide more complete GIS information for the area.

Services

- a. Support strategies to attract and retain emergency medical service and fire department volunteers.
- b. Study alternative ways to supplement volunteer rescue and fire departments.
- c. Encourage the Sheriff to remain active in the identification and surveillance of areas where crime occurs and maintain an active plan to address what is identified. Update and maintain accuracy of GIS system to seek and understand trends in criminal activity.
- d. Continue a drug officer position to intensify the campaign against drug use and drug sources.
- e. Designate neighborhoods for active community policing. Work with neighborhoods in neighborhood-watch activities.
- f. Continue to assess crime fighting needs and funding opportunities.
- g. Maintain a public attitude of zero-tolerance for illegal drugs and a constant goal for getting illegal drugs out of Southampton County.
- h. Continue a random drug-testing program in the County's personnel policy.
- i. Build relationships with all segments of the legal and law enforcement community in Southampton County to address and enhance enforcement efforts at combating drugs and crime. Work with law enforcement personnel in the incorporated towns.
- j. Share common concerns with other agencies and principals regarding law enforcement and court proceedings.
- k. Include community safety strategies in monthly department head meetings.
- l. Seek Sheriff's Department input concerning current and anticipated space needs and safety needs.
- m. Continually review the efficiency and effectiveness of County operations, including the use of shared services departments.
- n. Involve the County Administrator and department heads in discussions of initiatives to improve efficiency.
- o. Review County policies and update when necessary.

- p. Continually review and scrutinize County funding sources and expenditures. Assign grant-seeking leadership to specific County staff member(s).
- q. Coordinate and prioritize capital needs in a capital improvements plan that is reviewed and updated with input from departments and funded agencies annually.
- r. Develop personnel contingency plans including projected long-range personnel needs.
- s. Study ways to distribute the tax burden more fairly and equitably.
- t. Seek additional revenue sources that ease the dependence on real property tax while still encouraging economic development.
- u. Conduct regular meetings involving the Board of Supervisors and the towns' councils and Franklin City Council to promote cooperation.
- v. Consolidate services and funding where and when practicable.
- w. Continue prioritizing agency activities and funding requests within the framework of purpose, beneficiaries, and local government responsibility.
- x. Review County vehicle and equipment purchases with an eye toward life-cycle costs as well as initial investment costs.

Citizen Participation

- a. Develop an ongoing public information program to communicate County news to citizens on a regular basis. Consider designating one employee to act as public information officer as part of current role to ensure consistent public message.
- b. Plan and implement County Day for the public.
- c. Charge Board of Supervisors members and County staff to be available to civic and community groups for speaking occasions.
- d. Charge department heads with the responsibility for keeping their respective advisory boards active. Provide adequate funding for board training and workshops.
- e. Charge advisory boards to follow the policy guidelines of their respective departments and the County.
- f. Actively recruit people to serve on boards and committees.
- g. Utilize the County website, news media, and other social media platforms to publicize the activities of Southampton County government.
- h. Continue setting aside time at Board of Supervisors and Planning Commission meetings for general citizen input.
- i. Seek input from citizens regarding improvements the County can assist their neighborhoods with to increase their sense of place.
- j. Create a regular forum for citizens to provide positive comments with regard to improvements sought for their neighborhoods and the County as a whole.
- k. Coordinate efforts between citizens' groups to make positive change possible.
- l. Continue the practice of live streaming of Board of Supervisors and Planning Commission meetings to increase citizens' awareness.